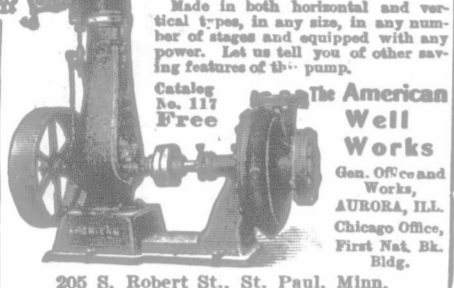


THE GREATEST Money Saver

Cheapest to install, least attention, fewest repairs, highest efficiency and economical and dependable under every condition of service is the

American Centrifugal Pump

There is not a valve or other get-out-of-order feature about it—just the easiest possible curved flow-lines without a sudden change of direction in passage through the pump, enabling water to be raised with less power than with any other pump in existence. It's the modern way in pumping. There's 41 years of manufacturing experience behind it. All gold medals given to centrifugals at the Alaska-Yukon-Pacific Exposition at Seattle in 1909 were awarded to this pump.



205 S. Robert St., St. Paul, Minn.

Watches that Keep time

In buying a watch here you run no risk, for our watches are fully guaranteed by the makers; besides, we stand back of them with our guarantee to refund money if they do not prove satisfactory.

At \$10 postpaid, this is the best watch ever offered in the West—a 15-jewel "Reesor Special" movement, an accurate and reliable timekeeper, in a solid nickel, solid back, dust-proof case; the same movement in 20-year gold-filled case, \$14.00.

D. A. REESOR
"The Jeweler"
Issuer of Marriage Licenses
BRANDON, Man.

SMOKE

Golden Sheaf

BRIGHT VIRGINIA TOBACCO

Manufactured by
ROCK CITY TOBACCO CO.
QUEBEC - WINNIPEG



Dominion Limited

\$1850

Every Dominion ["Limited" is built entirely in our own factory at Walkerville. Our output is not so large that it will tempt us to slight even the smallest detail in any car.

For thoroughness and honesty of construction, long life and efficient service, we challenge your comparison with any car, even with those selling at \$500 to \$1000 higher in price.

After you have noticed the handsome lines, the rich finish, and the luxurious roominess of this superb car, your next question is naturally: "Will I get my money's worth in service from this car?"

Our answer is: The designer of the Dominion "Limited" has been long and prominently identified with the automobile industry.

He can point to thousands of successful cars of his design, running season after season, with entire satisfaction to their owners.

Our instructions to our engineering department were: Choose the finest materials that money can buy; select nothing for cheapness, but watch every piece of material for efficiency, service and long life.

The result is a car that will stand up under hard usage; that will go thousands of miles over the roughest of roads with entire safety to the car, and comfort to its occupants.

The motor is cast from finest grey iron. The crank shaft is of finest vanadium steel. The frame is of special carbon steel, pressed cold, with extra wide flanges for strength. The straight line shaft drive is through nickel steel gears of great strength, heat-treated.

Front axle is heavy and strong, drop-forged, I-beam section, heat-treated.

Finest imported ball-bearings are used wherever they will add to the efficiency of the car.

The wheels have extra large spokes of second growth hickory.

Powerful brakes with 12-inch drums.

Throughout the entire car this liberal, almost lavish policy, is carried out.

The result is a motor car that is in the strictest sense of the word a car of quality.

OTHER MODELS SOON READY

Additional models to the Dominion line will soon be announced, including motor trucks and delivery cars.

RELIABLE AGENTS DESIRED

Dominion cars are already recognized as the foremost Canadian built cars, and their favor is rapidly spreading to every part of our wide country. Dealers who act as our agents will almost immediately find themselves in possession of a lucrative business. Write us today for territory and terms.

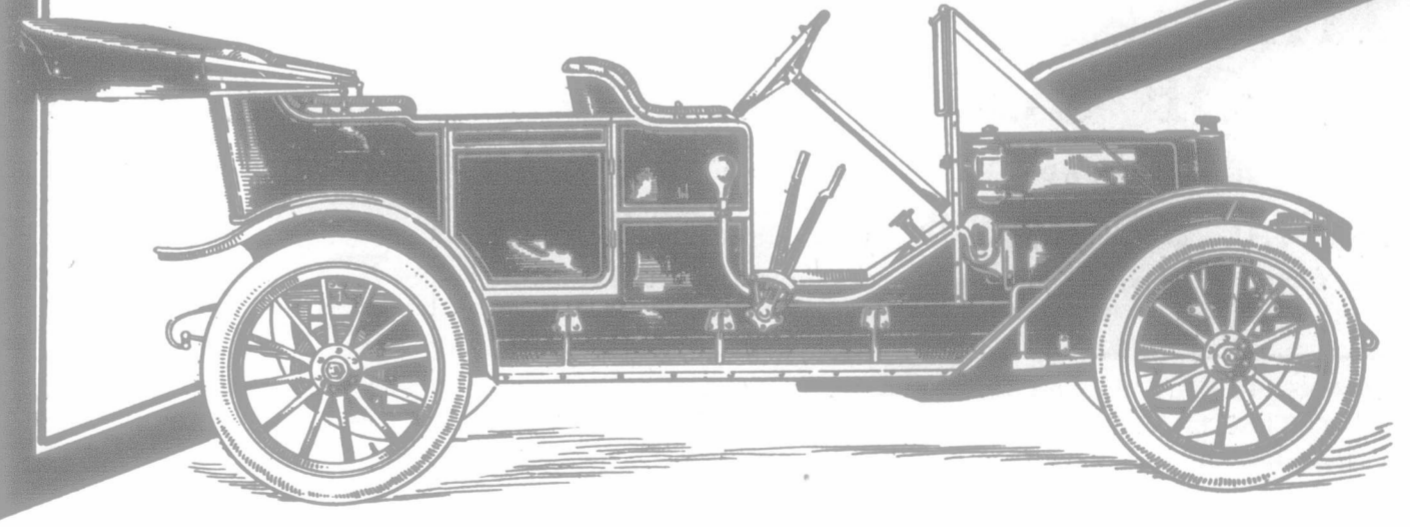
OUR HANDSOME CATALOG

describing and illustrating the Dominion "Limited" will be sent on request. Write for a copy today.

DOMINION MOTORS, Limited

38 Dominion Boulevard - - - WALKERVILLE, ONTARIO

We also make Trucks for Commercial Use



!! GRAIN GROWERS !!

Why not ship your grain to a Live Commission House who can get you Top Prices? Give us a trial shipment and see if we can't give you better returns than the other fellow. We watch carefully the grading of your cars. If shippers desire we will make Liberal Advances on receipt of shipping bill, and send returns promptly when sales are completed.

CONTINENTAL GRAIN COMPANY
223 Grain Exchange WINNIPEG, MAN.

James Richardson & Sons, Limited

GRAIN EXPORTERS

Wire us for net track offers when you have your grain loaded. We are always in the market for every kind of grain at top prices. We have a separate commission department for handling consignments to be sold highest bidder. Careful attention given to grading at every car. Large advances and prompt adjustments. Do not overlook writing for further particulars before shipping. All inquiries have our prompt attention.

WESTERN OFFICES
Grain Exchange, Winnipeg Grain Exchange, Calgary