

A Good Record.

Answering your letter for facts about gasoline traction engine work, I take pleasure in sending you herewith some photographs of our engine which is a Hart-Parr 22-45 horse power, bought June, 1909.

Since June 7th, 1909, we have had the engine in constant use,

as far as weather would permit, and have done plowing, discing and harrowing, both double and single, and threshing, also moving granaries and hauling cook-outfit.

The engine has given very satisfactory work on the whole, and the work done has been extremely good.

WORK OF GASOLINE TRACTION ENGINE, JUNE 7 TO OCTOBER 30, 1909

Kind of Work	Date 1909	Load	Miles Width of Travel Cov'd	Amount of work
Plowing-Breaking	June 7 to July 21, inc	6-14 in. plows	524 7 ft.	460 acres
Plowing-Strubble	October 2 (one day)	6-14 in. plows	10 7 ft.	8½ acres
Double Discing	July 23 to Sept. 7, inc	5-8 ft. discs	801½ 20 ft.	1939 acres
Single Harrowing	Oct. 15 to Oct. 19, inc	7-sec. Harrow	167 33 ft.	668 acres
Single Discing	Oct. 20 to Oct 30, inc.	4-8 ft. disc.	10-sec. harrow.	18,500 bu wheat
Single Harrowing	Sept. 8 to Oct. 14, inc	32 in x 54 in	Case Separator	10,452 bu. oats
Threshing		Total mileage.	1502½	

OIL USED IN BREAKING 460 ACRES

Kerosene 1642 gals. at 25c.	\$410 50
Gasoline 238 gals. at 30c.	71 40
Cylinder Oil 32 gals. at 61c.	19 52
Black Lub. 30 gals at 26c.	17 80

Per Acre.....\$519 22
\$ 1 13

With the kerosene we use about an equal quantity of water. In general the kerosene used is about one barrel per day, the average being for plowing 3-5/100 gallons per acre; which would be a fair figure for any work where the engine had a full load. Threshing we used about 30 gallons per day.

The highest day's run plowing was 40 miles, working 24 hours, on July 2, with full moon, which amounted to 33 acres. The average was 16 acres per actual

working day, which includes every day the engine actually plowed. The crew consists of two engineers and two helpers running double shift. Our driving team hauls all the oil and water and brings the crew back and forth to the field.

Trusting that the above answers your questions, I am,

Very truly yours,

W. Gordon Smith,

Mgr Overbrook Wheat Farms, Eyebrow, Sask.

Costs 5 cents per bushel for Wheat.

I have a 20 h.p. International gasoline engine and a 32-inch Belle City thresher.

I find that it costs me 3 cents a bushel to thresh oats, 5 cents a bushel for wheat and about 8 cents for flax. That is, taking it from the stooks.

I have been running this rig for three years and find it satisfactory for my own threshing, but not for custom threshing. I think it is the fault of the agents that buyers have trouble with their engines. They say that a little boy can run an engine for there is nothing to it. But I find that it takes a big boy to run it for there is a lot to it.

It takes 15 gallons of gasoline to run the outfit a day and I pay 18 cents a gallon for same.

Will you kindly send me the book "Plain Gas Engine Sense?"

Your truly,

Taylor Tollefson,
Dubuc, Sask.

Gas Engine the Farmer's Power.

My engine is a 15 horse power International portable engine. I use it to run a 32 inch Belle City separator and I run a 10-inch crusher and wood saw in the winter and spring.

I have run my outfit three seasons and have had very little

trouble with it, as it is always ready to go when I have it in shape. I have heard some say that a gasoline engine was like a balky horse; it would stop when it liked and start when it got ready. But I have never found this the case, as when my engine stopped I always found the cause. After running it a short time I could detect anything that was wrong before it stopped.

I use about 12 gallons of gasoline per day of ten hours when threshing and about 6 when sawing. I pay 33c. per gallon for gasoline by the barrel. I can often run the whole rig alone and sometimes help to pitch.

I believe that when one is buying an engine he should be sure to get one large enough to do his work without over-working it.

Yours truly,

B. Raymer,
Red Deer, Alta.

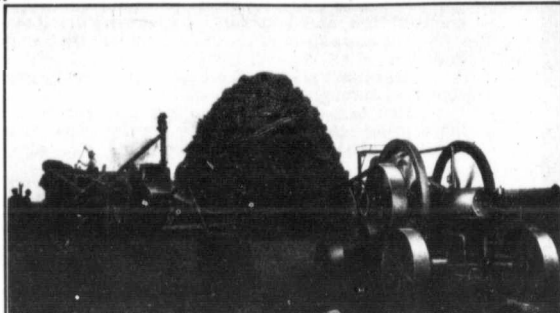
Keep the Mixture Right.

As per request, I am forwarding you photo of my gasoline engine. It is a Gilson 2½ air cooled, 4 cycle. The photo represents one day's work, 10 cords, consuming about one gallon of gasoline at a cost here of 28c. per gallon. The average consumption is the same as that mentioned, which is certainly a low consumption.

The nominal speed is 450. As a rule for most work I lower the

The Manitoba 25 H.P. Gasoline Threshing Engine

will save you
Money, Time, Worry

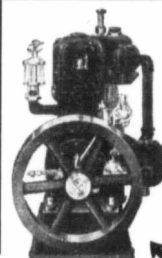


Write us for catalog C, and particulars of the most liberal guarantee ever given with a threshing engine. They are guaranteed to do the work, are low in price and sold on easy terms of payment. Investigate before buying.

We manufacture GASOLINE ENGINES for every purpose, POWER and PUMPING WINDMILLS, WOOD and IRON PUMPS, GRAIN GRINDERS, SAW FRAMES, Etc.

See our Big Exhibit at BRANDON FAIR

The Manitoba Windmill & Pump Co. Ltd.
Box 301
Brandon, Man.



Here's Your Binder Engine

Here's the engine that saved crops last year for thousands of farmers and it's going to do it again this year. Light weight and efficiency—that's the secret. Weighs only 165 pounds and the simplest and highest grade farm engine in the world. The

Cushman 3 h.p. 4 Cycle, 165 lbs. The Light Weight Wonder

Also a wonderful work, time and money saver on all other power work. Easiest to start, smoothest, quietest running—especially adapted for cream separator, pump, churn, grinder, wood saw, and all other farm machines, and it more than pays for itself in one season by saving your grain crops. Attach engine to your binder by our simple brackets. No blacksmith needed.

Send Your Name Now for Free Book

Let us tell you about the superiority of the CUSHMAN and its record in the hands of others. Careful shipment to be made in your territory for July and August delivery. Please state style of binder for which you want engine. Write postal now to Cushman Motor Works, 2052 N. St., Lincoln, Nebr.

THIS IS IT?



Scouten's Engine



Automatic Coupler

Uncouples without slacking speed of engine at all but cannot be uncoupled accidentally by any pull of the engine.

See it at the Fairs this season, it can be seen at the Nichols and Shepard Thresher Co. exhibit.

Write for pamphlets today with testimonials. Each coupler guaranteed to give satisfaction or money refunded.

Price \$10.00 Cash With Order.

Scouten Bros., Riding Mountain, Man.

Patronize Those Who Patronize This Paper