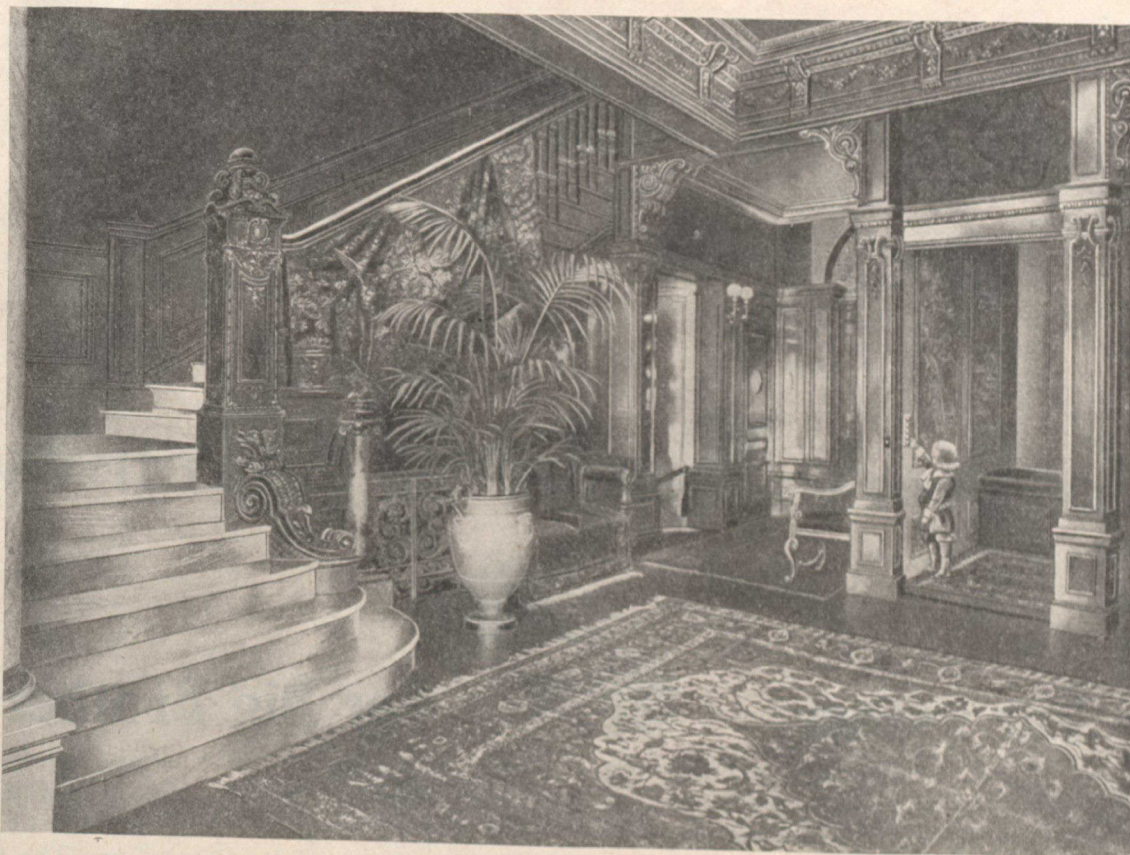


Otis Residence Elevator

No
Attendant
Necessary



A
Child
Can
Operate

See
Illustration

Above illustrates typical entrance to Otis Residence Elevator

Description of Operation

The Otis Automatic Electric Elevators are designed primarily for private residence service, as with our improved push-button system of control a regular attendant is unnecessary.

By pressing a button placed in a hallway, the car is brought to that floor, stopping automatically when opposite the landing.

Inside the car we place a row of buttons, which are numbered to correspond with the various floors. By momentarily pressing one of these buttons the passenger operates the car to the desired landing. At the will of the passenger the car is instantly stopped at any

point in its travel by pressing the Stop Button.

The passenger has entire control of the elevator as the hall buttons are not in operation while the car is in motion and until the passenger has left the car.

We provide the enclosure doors with automatic interlocking door fixtures which prevent the opening of any door until the car has stopped opposite the floor corresponding to the button pressed.

The car cannot be operated until the door has been closed and also locked.

Elevators of this type are installed in principal cities of the world. We have several installations in Canada. Write us for catalogue and list of users.

OTIS-FENSOM ELEVATOR COMPANY, LIMITED

Head Office, TORONTO, ONT.

Works, HAMILTON, ONT.