

black ground may be chosen for the basque, and the skirt may be of similar silk or of plain black.

The hat is a unique shape in fine straw, faced with velvet and handsomely garnished with ribbon, tips and jet.

FIGURE NO. 419 T.—LADIES' RECEPTION TOILETTE.

(For Illustration see Page 307.)

FIGURE NO. 419 T.—This consists of a Ladies' bell skirt and coat-basque. The skirt pattern, which is No. 4409 and costs 1s. 6d. or 35 cents, is in nine sizes for ladies from twenty to thirty-six inches, waist measure, and is differently represented on page 335 of this DELINEATOR. The coat-basque pattern, which is No. 4406 and costs 1s. 3d. or 30 cents, is in thirteen sizes for ladies from twenty-eight to forty-six inches, bust measure, and may be seen again on page 330.

In the present instance plain cr  pon, plain and brocaded silk and velvet are handsomely united in the toilette, and velvet bows and Kursheedt's Standard Escorial passementerie provide rich garniture. The front of the bell skirt is fashionably smooth and meets the back for a short distance at each side about midway to the lower edge.

Above and below the meeting the edges flare to reveal a panel of brocaded silk applied to the foundation skirt at each side. The skirt is made with a slight train, which may, if objectionable, be cut off, the pattern indicating the proper shaping for a skirt of uniform round length; and backward-turning plaits at each side of the center seam joining the bias back edges flare out into the full folds of the train. A large rosette-bow of velvet trims the skirt at each side where the front and back meet, and above the bow each edge is decorated with a broad band of velvet overlaid with Escorial passementerie.

The picturesque coat-basque has short, loose jacket-fronts reversed at the top in broad lapels that meet the rolling collar in notches, and a dart-fitted vest that is closed in double-breasted style with button-holes and large buttons. The vest is cut in low, rounding outline at the top and is finished with a rolling collar, above which are visible a short chemise and a standing collar that are covered with soft folds of tulle and a jabot of *point d'esprit* lace. The back of the basque has stylishly long coat-tails and is superbly adjusted by the usual gores, and a curving center seam that terminates below the waist-line above long coat-laps; and coat-plaits are arranged below the side-back seams. The coat

joined in a center seam, at each side of which backward-turning plaits are laid. The front and sides of the skirt fall smoothly over

the wrists with round cuffs that are decorated at the top with velvet and passementerie. The rolling collar is of velvet, and the lapels are faced with brocaded silk and edged with velvet and passementerie.

A sumptuous toilette for an afternoon or high tea or for calling or driving may be developed by the

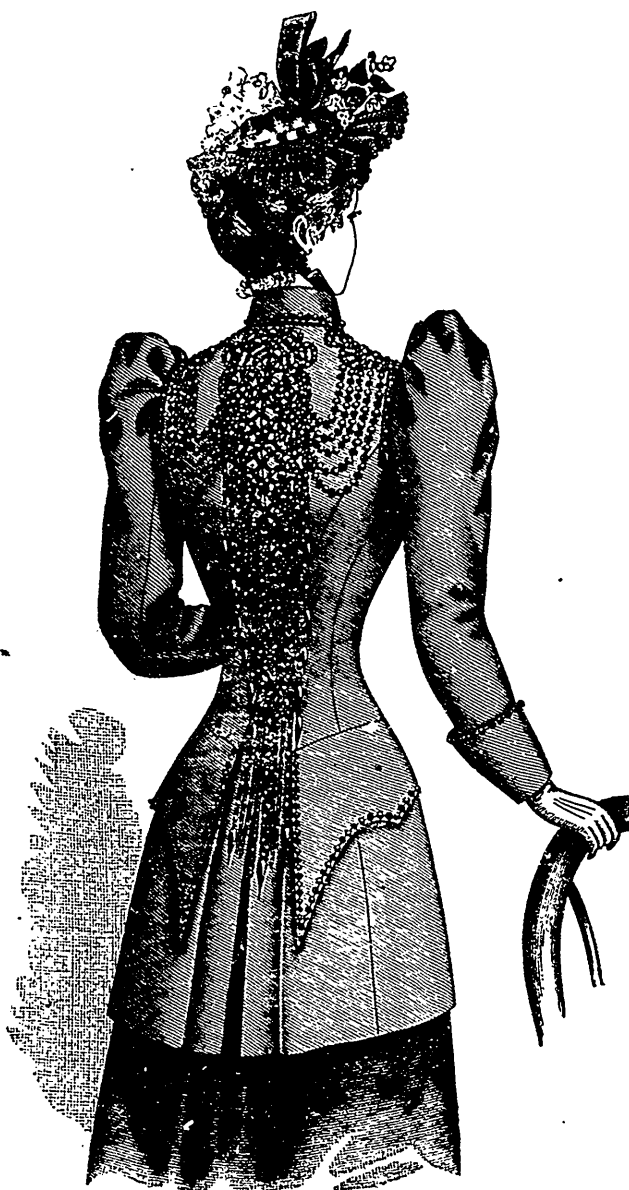


FIGURE NO. 426 T.—LADIES' COAT-BASQUE.—This illustrates Pattern No. 4439 (copyright), price 1s. 3d. or 30 cents.

(For Description see Page 317.)



FIGURE NO. 427 T.—LADIES' TOILETTE.—This consists of Ladies' Coat-Basque No. 4439 (copyright), price 1s. 3d. or 30 cents; and Bell Skirt No. 4436 (copyright), price 1s. 6d. or 35 cents.

(For Description see Page 317.)

mode in Pompadour silk, Bengaline, armure, glac   Surah or *drap de France*. Velvet or any choice silken fabric will combine handsomely with Bedford cord, broadcloth and similar woollens; and rich lace, embroidery, crystal or iridescent passementerie, jewelled bands, etc., may be chosen for garniture.

The small toque is becomingly adorned with passementerie and a Prince's tip.

FIGURES NOS. 420 T AND 421 T.—LADIES' COSTUME.

(For Illustrations see Page 308.)

FIGURES NOS. 420 T AND 421 T.—These two figures illustrate a Ladies' costume. The pattern, which is No. 4431 and costs 1s. 8d. or 40 cents, is in thirteen sizes for ladies from twenty-eight to forty-six inches, bust measure, and is differently represented on page 323 of this DELINEATOR.

At figure No. 420 T the costume is pictured developed in a handsome combination of cloth and velvet, and velvet and iridescent *cabochons* contribute rich garniture. The skirt is a stylish example of the circular bell mode and has bias back edges that are

joined in a center seam, at each side of which backward-turning plaits are laid. The front and sides of the skirt fall smoothly over