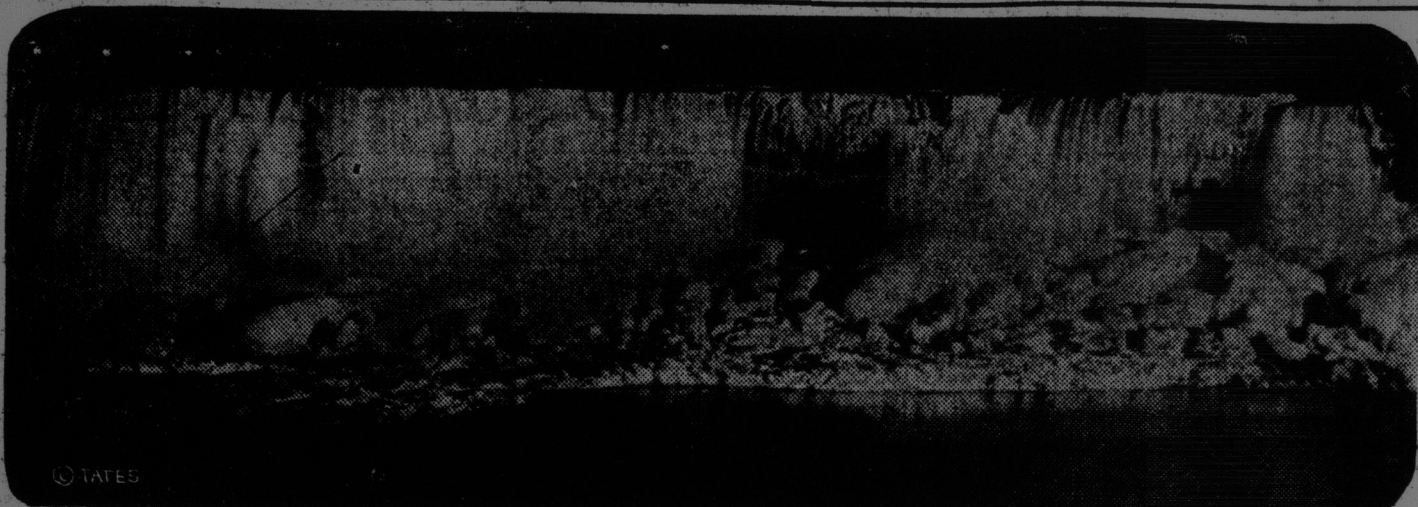


THE EVENING TIMES-STAR, SAINT JOHN, N. B., FRIDAY, JANUARY 15, 1926

NIAGARA UNDER THE SEARCHLIGHT



Unique photo gives new glimpse of dazzling beauty of the falls at night as giant flood lights pour beams on ice and water.

LOWER PRICES REGISTERED IN BOTH MARKETS

Stocks on the Montreal Exchange Weak—Smelters and Power Down.

SELLING PRESSURE IN WALL ST. RESUMED

Motors are Again the Chief Point of Bear Traders' Attack

MONTREAL, Jan. 15.—Prices were off at the opening to today's stock market, the weak features being Consolidated Smelters, down two at 187 and Quebec Power also down two at 118. Brazilian, the active leader, eased 1-8 to 82 1-8, while Dominion Textile lost 3-4 to 89 1-2. Montreal Power lost 1-4 to 210 1-4. National Breweries sold at 268 3-8, down 5-8. The only issue to display strength was Wayamack, which rose one to 81. However,

it fell back a point during the early trading to its closing quotation at 80. St. Lawrence Flour and National Brick preferred in small lot transactions, sold the same at 42 and 69 respectively.

IN WALL STREET.

NEW YORK, Jan. 15.—Selling pressure was resumed at the opening of today's market. Motors were again the principal targets for the attacks of bear traders, Willys Overland and Hudson each opening a point lower. Foundation Company dropped two points and losses of a point or more were recorded by Chesapeake and Ohio, General Asphalt, Crucible Steel, United States Realty and May Department Stores.

COAL AND WOOD

Stove Cut Up Capers?

The STOVE may be all right—but how about the COAL? Try one of these—Besco Coke, Broad Cove, Pictou, Special, or Sydney Nut. Phone Main 3938

EMMERSON FUEL CO. LTD. 115 City Road

COAL

WEST VIRGINIA Suitable for Furnace and Domestic Use. Foshay Coal Co. Con. Lansdowne Ave. & Elm St. Phone M. 3908

NEW YORK MARKET.

Stocks to 12 noon.

	High	Low	Noon
Atchafalpa	124 1/2	124	124
Am. Telephone	143	143	143
Am. Can.	128 1/2	128 1/2	128 1/2
Baldwin	128 1/2	128 1/2	128 1/2
Beth Steel	48 1/2	47 1/2	48 1/2
Bilt & Ohio X.D.	92 1/2	92 1/2	92 1/2
Chrysler	52 1/2	51 1/2	52 1/2
Dodge Com.	120 1/2	120 1/2	120 1/2
Huff Motors	119 1/2	119 1/2	119 1/2
Kennecott	64 1/2	64 1/2	64 1/2
Rubber	80 1/2	80 1/2	80 1/2
Steel	124 1/2	124 1/2	124 1/2
Studebaker	57 1/2	57 1/2	57 1/2
Union Pacific	147 1/2	147 1/2	147 1/2
Woolworth	30 1/2	30 1/2	30 1/2
White Motors	82 1/2	82 1/2	82 1/2

MONTREAL MARKET.

Stocks to 12 noon.

	High	Low	Noon
All Sugar Com.	30	30	30
Abitibi	78 1/2	78 1/2	78 1/2
Brazilian	82 1/2	82 1/2	82 1/2

COAL AND WOOD

CHESTNUT AMERICAN ANTHRACITE OLD COMPANY'S LEHIGH Unexcelled for Heat and Lasting Qualities CUSHING, - Main 417 18-1425

CHICAGO GRAIN MARKET.

CHICAGO, Jan. 15.

	High	Low	Noon
May wheat	176 1/2	176 1/2	176 1/2
July wheat	175 1/2	175 1/2	175 1/2
May wheat (old)	174 1/2	174 1/2	174 1/2
May corn	86 1/2	86 1/2	86 1/2
May corn	86 1/2	86 1/2	86 1/2
May oats	45 1/2	45 1/2	45 1/2

WINNIPEG GRAIN MARKET.

WINNIPEG, Jan. 15.

	High	Low	Noon
May wheat	169 1/2	169 1/2	169 1/2
May oats	60 1/2	60 1/2	60 1/2

MONTREAL, Jan. 15.—Cable transfers.

4.15 PM.

Brokers' Opinions

NEW YORK, Jan. 15.—Clark Childs—

"The rail market is in shape to respond readily to early plans for combinations, among which those affecting the N. Y. C. and Pennsylvania groups are likely to prove most interesting." Houseman—"We expect an advance session for Rock Island at advancing prices." Hornblower—"We judge that oil stocks are on the verge of a new move, if in fact, it has not already started. Among the utilities we again call attention to Allegheny, Fairbanks Morse and Safety Cable."

H. K. Evans—"I sent out a message yesterday saying that in my opinion the market was ripe for a break, and that it would start before Feb. 1 and might start any time. It started yesterday and I think will go a good way in fact, my personal conviction is that the long bull market, which has been the greatest that Wall Street has seen in my experience has come to an end, and that the year 1926 will be a bear year. I strongly advise getting out of long stocks as rapidly as possible."

COAL AND WOOD

NOW

We can supply your needs in COAL as well as Wood.

McBEAR PICTOU RESERVE MINE and MILLER CREEK Phone M. 733

McNAMARA BROS.

BROAD COVE ACADIA STOVE PICTOU SPRINGHILL Nova Scotia Anthracite Chestnut and Nut Size, Good For Heaters and Furnace

McGivern Coal Co. 12 Portland St. Main 42

American Anthracite

Pea Coal Scotch Anthracite All Sizes

All the best varieties of Soft Coal

R.P. & W.F. STARR, LTD. 49 Smythe St., 159 Union St.

ECONOMY COAL

"IS GOOD COAL" Low Price Ton, Half Ton or Bag Lots Phone Main 2636 or 594

J.S. Gibbon & Co. Ltd. 15-1-26

COAL and WOOD

SCOTIA, BROAD COVE Heavy Soft Wood and Dry Kindling, \$2.00 a Load

W. A. DOWD Hanover St. Extension, Phone 123

Broad Cove Coal just received. Another large shipment excellent stock.

Prompt Delivery

D. W. LAND Railway Siding, 100 Erin St. Phone 4055 On Hand

BESCO COKE BROAD COVE PICTOU PEERLESS LUMP RIDGE Hard and Soft Wood

Sun Coal and Wood Co. Phone M. 1346 78 St. David St.

FOR SALE—Dry Cut Wood, \$2.50 large truck load—W. F. Currier, Mass Street Extension, Phone 6714

BEST HARDWOOD, any length, \$11.00 cord, \$4.00 half cord—W. 804-11.

FIRST RHUBARB IS 25C. A POUND; POTATOES ARE \$6.00 TO \$6.50 PER BBL.

Lower Prices Quoted For Pork, Eggs, Sugar, Dry Cod on Saint John Market; Cheese, Beef and Squash Values Advance

THE first of the native rhubarb was offering in the city market yesterday and market supplies on the whole were good and abundant. Potatoes had reached a new high mark of \$6 to \$6.50 a barrel at wholesale, but cheaper prices were quoted for pork, eggs, sugar, American clear pork and dry cod. Cheese, beef and squash were all dearer.

In the wholesale country market list potatoes at their new figure were up 50 cents a barrel. Western steers, formerly quoted at 12 cents, were worth 12 to 13 cents, and western cows made a one cent advance at 10 to 11 cents a pound. Small pork at 17 to 19 cents a pound was down one cent on the lower quotation. Egg prices had been dropping very quickly and there was another five cent cut during the week. Fresh extras were worth 50 cents a dozen and pullet extras 45 cents a dozen. Storage firsts at 40 cents lost three cents and storage seconds at 38 cents were down two cents. Poultry prices held firm. Poultry was quite plentiful.

BRINGS 25c. PER POUND.

In retail green goods, native hot house rhubarb brought 25 cents a pound. Spanish onions were selling at six to seven cents. Mushrooms at \$1

Life Has Existed Millions of Years

CHAMPAIGN, Ill., Jan. 15.—If scientific estimates of the age of rocks is correct, life existed on this earth 38,000,000 years ago, scientists here hold.

In one of the new exhibits here is a fossilized plant discovered in Montana in Pre-Cambrian rocks that are, according to estimates, 38,000,000 years old. The exhibit just finished by Frank Baker, curator of the museum, follows the development of life on earth in chronological order showing the changes that have occurred in the process of biological development. The animal life in the exhibit is of a very simple type, very much like the simple sea and slime organisms of the present time.

Morning Stock Letter

NEW YORK, Jan. 15.—Strength in one market leader had no effect on the rest of the market, and professionals immediately sold the market. It was simply the result of drying up of buying power, probably too high. The market looks lower in the immediate future. Consequently, we would cut down on our commitments whenever the market presents an opportunity. At the same time the business situation is bright. Earnings of most companies will achieve the high points so far in the first quarter of this year, and there is nothing in the outlook to bring lower prices except conditions in the market itself. At this time, however, balance other factors. There are so many issues traded in the market, even in weak markets stocks can go up. Cons. Gas and A.C.R. acted well yesterday. Both are likely to sell higher.

Current Events

NEW YORK, Jan. 15.—Federal Reserve Bank no change in rate of 4 per cent. California Packing regular quarterly dividend \$1.50.

Western Union year ended Dec. 31, preliminary statement \$18.19 a share, against \$15.35.

Federal Reserve System ration 72.7, against 70.2 week ago, and 76.0 year ago.

New York Federal Reserve Bank, 81.8, against 80.1 week ago, and 76.9 year ago.

Twenty Industrials 156.3, off 1.41; 20 rails 111.28, off 1.16.

CONFIDENCE IN WEST.

MONTREAL, Jan. 15.—A. J. Nesbitt, who is back from a meeting of the board of directors of Winnipeg Electric, states that what struck him most forcibly while in Winnipeg, was the more confident feeling which prevailed in practically all circles. He states that the outlook for Winnipeg Electric is steadily improving and more so the improvement in the earnings of the street railway department. This, he said, began to show in October and was maintained up to the end of the year. The quantity of the power department have been steadily increasing for some time, being the best since 1921. The outlook for the current year he described as favorable.

"So your new maid left, too?" "Yes, she couldn't get her home town station on our radio."

A SAP is a fool who thinks every other fellow is a sap.

Huge Deposit Of Iron Ore Reported In Ontario

Believed Largest Body of Kind in North America; Situated Forty Miles West of Fort William, is Magnetite and Tests Higher Than Minnesota Product

MINNEAPOLIS, Minn., Jan. 14.—The Minneapolis Journal today says that the discovery of what is believed to be the largest body of iron ore in the North American continent is announced from Toronto.

The ore, the newspaper says, is situated 40 miles west of Fort William. It is magnetite and tests 14 points higher than the mesabi ore in Minnesota. After it is crushed, the story says, it yields 65 per cent iron, free of moisture.

After testing five tons of sample ore, the story says, the University of Minnesota reports it of the highest quality treated there.

Fire Sweeps Quebec Hotel Wing; 6 Hurt

QUEBEC, Jan. 14.—With a loss that is unofficially estimated around two million dollars, with five firemen taken to hospital and a commercial traveler named Boyd, of Montreal, suffering from asphyxiation, the Chateau Frontenac Hotel, one of the premier hostilities in Canada was the victim tonight of a conflagration that raged for nearly five hours before it was finally controlled.

The principal damage was sustained by the older portion of the building, that wing which overlooks the St. Lawrence River and which contained the great drawing room and the old tower. The new portion, in which is situated the lofty 18-story central tower, was saved and did not suffer much damage beyond that of smoke and water.

NEW VOTE ORDERED IN ST. BASIL PARISH

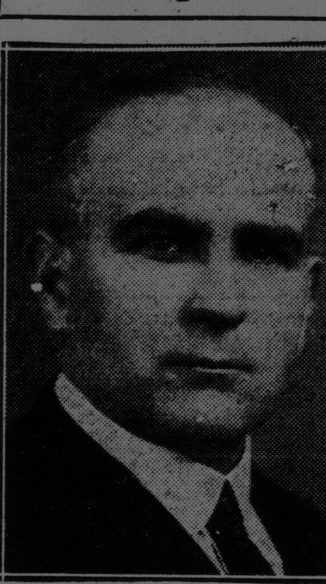
Madawaska Council Hears Returning Officer Put Ballots in Envelopes

EDMUNDSTON, Jan. 14.—A new election for county councillors from the parish of St. Basil was ordered here today by the Madawaska Municipal Council, following a protest by Paul Clavette, one of the defeated candidates, that the returning officer placed the ballots in the envelopes instead of allowing the voter to do so and also that no proper compartment for the marking of ballots had been provided there. The council decided that the election would be held on a date to be named later by the warden.

The council began its sessions on Tuesday. Arthur Michaud, of St. Hilare, was re-elected warden and Arthur Cyr, of Edmundston, was re-elected secretary-treasurer. Routine business occupied a large part of the time of the meetings.

IN HERRIN, ILLINOIS, a grandfather must be a great curiosity.

Is Manager Here



BYRON E. HAMBLEY,

Who has been appointed City Manager for The London Life Insurance Company at Saint John. Mr. Hambley is a very successful and popular insurance man. He has had wide and varied experience and for several years has been connected with The London Life. He has been a member of the Big Producers' Club of his company since its inception and was its first Vice-President. Before his appointment at Saint John, Mr. Hambley was a Superintendent of The London Life at Toronto.

ISAAC MERCER IS CHOSEN PRESIDENT

Annual Meeting of Newfoundland Benefit Society Held—Mayor's Death Regretted

Isaac Mercer was installed as head of the Newfoundland Benefit Society at the annual meeting held last evening in Orange Hall, Germain street. There was a good attendance and the reports of the officers showed the lodge to be prosperous. Feeling reference was made to the death of Mayor F. L. Potts and a resolution of sympathy with the family was adopted. The officers were installed by Past President Fred Pike, as follows: Isaac Mercer, president; Hugh Milley, vice-president; William Tollett, chaplain; Percy Gibson, recording secretary; Fred Pike, financial secretary; E. Vey, treasurer; S. J. Butcher, sergeant-at-arms; Silas Day, inner guard. At the close of the business session a social hour was enjoyed and refreshments were served.

CUP REPLAYS

LONDON, Jan. 15.—(Canadian Press).—In replays from the third round of the English football association cup competitions yesterday, Fulham defeated Everton by one goal to nothing and Blackburn Rovers won from Preston North End by four to one.

HOW DO THEY DO IT?

"SHE has such an interesting face. She looks like a woman who has lived and suffered." "I fancy she has. For years she managed to squeeze a number four foot into a number two shoe."—Columbia Jester.

**THE ROYAL TRUST**  
EXECUTORS AND TRUSTEES  
SAINT JOHN ADVISORY BOARD  
G. E. BARBOUR W. MALCOLM MACKAY Major-Gen. H. H. McLEAN, K.C. A. M. PETERS  
Saint John Office: 54 Prince William Street Managers: E. B. HARLEY  
Assets under Administration Exceed \$357,000.000

**FUR SALE**  
GREAT REDUCTIONS ON OUR ENTIRE STOCK  
—OF—  
**Fur Coats**  
DURING JANUARY SALE  
**C. & E. EVERETT LIMITED**  
27-29 CHARLOTTE STREET

**A PROVINCIAL ORGANIZATION**

FOR nearly 60 years the Bank of Montreal has maintained offices in the Maritime Provinces ready to accept monies upon deposit, and loan these funds to farmers, merchants, manufacturers and business men generally upon terms consistent with sound banking and the proper custody of its depositors' funds.

Since the first office was established in 1867 at Halifax, the Bank has spread throughout the Maritime Provinces until today it has 29 offices in these Provinces, with headquarters at Halifax, ready to give prompt and efficient service.

Small accounts are welcome and are accorded the same service as that given to large amounts.

Customers of the Bank have all the advantages resulting from a Provincial Organization, combined with the strength and facilities of a nation-wide Banking Institution having world-wide connections.

**BANK OF MONTREAL**  
Total Assets in excess of \$750,000,000  
Headquarters for the Maritime Provinces 205-207 Hollis Street, Halifax

**QUALITY PRICE SERVICE**  
Are the Essentials to Consider When Buying Coal.  
The quality of our Welsh coal is ever increasing, due to special care, by our connection in Wales and improvements and enlargement of our plant here.  
Our price is at the same reasonable figure of twelve months ago.  
Our service means much to every coal buyer.  
SIZES—FURNACE, NUT, CHESTNUT  
**\$16.50** SLICED CASH  
50c. extra for bags delivers the Coal to any Floor required.  
TELEPHONE M. 1913  
**CONSUMERS COAL CO. LIMITED**  
Charlotte, Below Brittain Street.

**Scotch Anthracite**  
HIGHEST GRADE  
Ex. S. S. "Carrigan Head"  
In all Domestic Sizes.  
ORDER NOW  
**Maritime Coal Service**  
LIMITED  
PHONE M. 3233—UPTOWN OFFICE M. 3290

**COAL and WOOD**  
SCOTIA, BROAD COVE Heavy Soft Wood and Dry Kindling, \$2.00 a Load  
**W. A. DOWD**  
Hanover St. Extension, Phone 123  
Broad Cove Coal just received. Another large shipment excellent stock.  
Prompt Delivery  
**D. W. LAND**  
Railway Siding, 100 Erin St. Phone 4055 On Hand  
**BESCO COKE**  
BROAD COVE PICTOU PEERLESS LUMP RIDGE Hard and Soft Wood  
**Sun Coal and Wood Co.**  
Phone M. 1346 78 St. David St.  
FOR SALE—Dry Cut Wood, \$2.50 large truck load—W. F. Currier, Mass Street Extension, Phone 6714  
BEST HARDWOOD, any length, \$11.00 cord, \$4.00 half cord—W. 804-11.