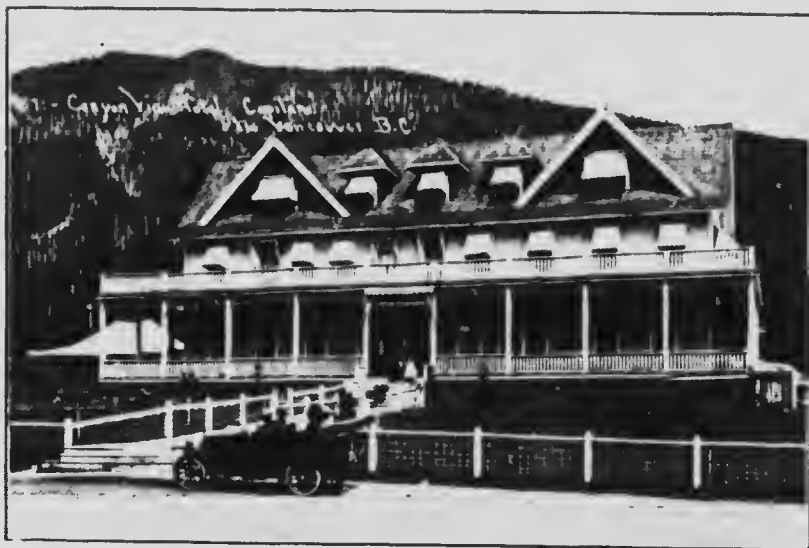


TOURISTS come to the
"Canyon View Hotel"



Overlooking the famous Canyon on the Capilano River and nestling amidst fascinating scenery at an altitude of 630 feet.

Everybody will enjoy the wonderful air and surroundings; and capital fishing is to be obtained.

Mountaineers will be delighted by the unique scenery when ascending Grouse Mountain by the well-cut trail leading out of the Hotel grounds. Giant forest trees, waterfalls, high rocky cliffs and unexpected outlooks over sea and land to the south are amongst the rewards of the climber.

A splendid automobile road goes by the hotel doors and a service of comfortable cars runs from the end of the Electric Railway.

The Canyon View

THE PLACE for REST, for RECUPERATION and for PLEASURE

Rates \$2.50 to \$3.00 per day.

Patronize the advertisers and mention "The Northern Cordilleran."