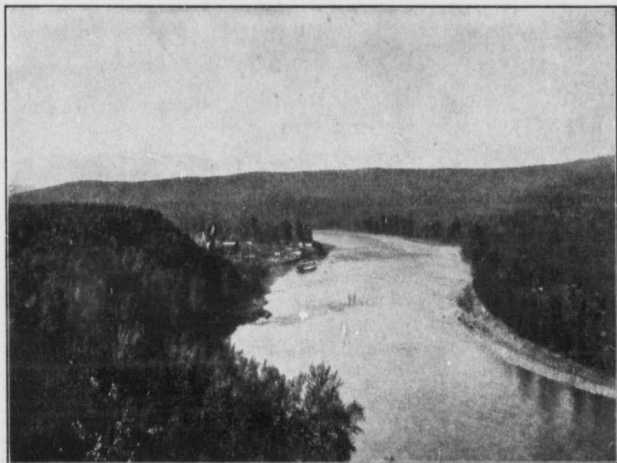


The valleys of the Kitsumkalum and Copper rivers, however, when put under cultivation, will be found capable of producing enormous yields of small fruits, apples, pears, prunes, and probably peaches in the 200,000 acres available. These valleys are not more than three to four miles wide, with bench lands above well



Typical Bench Lands along the Skeena River, Much of Which Will Produce the Best Quality and Finest Flavored Fruits.

watered, and lie perfectly for irrigation works if ever needed, which is quite improbable. The soil consists of a heavy varying depth of white silt on a loam and clay subsoil. The climate, winter and summer, is very moderate, and nowhere will conditions be found more ideal for the specialist in farming and fruit growing. With an already large and ever-growing market near at hand, and an insatiable appetite of the Interior and Prairie portions of the country to supply, which can only be done from such areas as this, an easy road to comfort and affluence is suggested to those who locate in these favored valleys.

### ***Temperatures, Etc.***

The latest authentic records for the Bulkley Valley were made at Aldermere for the winter of 1907-8. The coldest day was 12° below zero, and on seven other days only throughout the winter the register showed below zero. Although more severe winters have been experienced, the lowest recorded temperature was 38° below zero on Feb. 3, 1907, while two weeks later it was 50° above zero; all reports indicating that the cold is never steady, and when extremely cold the atmosphere is