

ROOFING AND PAVING MATERIALS

TARRED FELT, 2 and 3 ply.

BUILDING PAPERS,

COAL TAR, PITCH,

DEAFENING FELTS.



ALEX. McARTHUR & CO.

650 Craig Street, Montreal.

 Factory:
Harbour and Logan
Streets, Montreal.

 Paper Mills:
Joliette, Que.

Plaster Your Building With

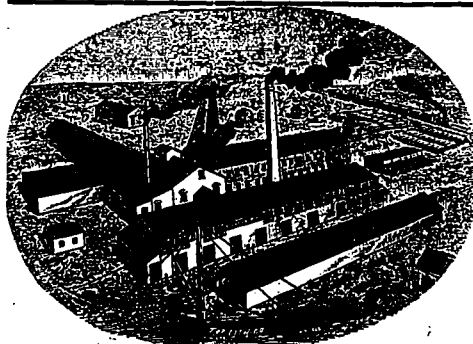
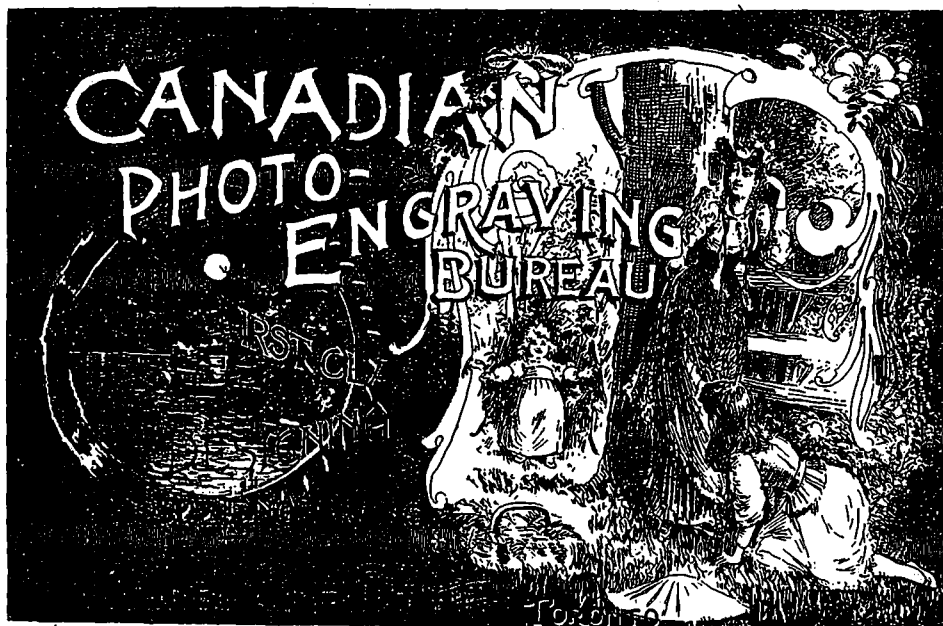
ACME CEMENT PLASTER

"NATURE'S PERFECT PLASTERING MATERIAL."

Is not an artificial compound, but perfect in its natural state, requiring only calcining to prepare it for use. No acids, chemicals, hair, fibre or ingredients of any kind used in its manufacture; requires only the addition of sand in its application to the wall. More simple in application, uniform, reliable, durable, stronger, cheaper and requires less labor than any plastering material ever produced. Most perfect, fire-proof plastering material on the market. 30,000 tons used in the United States in 1891 (1 ton Acme will cover same surface as 3 tons of the patent materials that are furnished to the trade mixed with sand.) Nearly 2,000 tons used on the World's Fair buildings at Chicago.

Does not require skilled labor. A house plastered with this material can be occupied 4 to 6 weeks sooner than if plastered with Lime Mortar. Owing to its density it makes a house warmer in winter and cooler in summer. But little more expensive than common lime mortar.

Send for samples, &c., prices delivered at any point, and further information to

B. L. NOWELL & CO., AGENTS
12 & 14 NAZARETH STREET, MONTREAL.


ESTABLISHED 1870.

Beamsville Pressed Brick Co.,

MANUFACTURERS OF

 Fine Pressed
Plain
Ornamental
Rock face

BRICK

 Farm Drain Tile,
Roofing Tile, etc.

 Red
Brown
Buff
AND
other shades.

Our goods cannot be excelled in quality. No time or impurities as often found in clay.

 Office and Works:
BEAMSVILLE, ONT.

Telephone communication.

 SALES AGENTS: **ELLIOTT & McKENNT,**
34 Yonge Street, - TORONTO.
E. C. HOPKINS,
145 St. James St., MONTREAL.