

MINING SHOVELS

our 'FENERTY' Brand

COOK'S PAN SHOVELS,
COAL TRIMMERS SHOVELS,
SCRAPER SHOVELS, ETC.

—ARE USED BY—

*The Largest Mines in Canada*MANUFACTURED BY
The HALIFAX SHOVEL CO.

HALIFAX, N. S.

ALL GOODS GUARANTEED.

**ORNAMENTAL
IRON WORK
WIRE CLOTH
WIRE GOODS**

WE SPECIALIZE IN MINERS
GREENS made of HARD STEEL
WIRE or PERFORATED SHEET
STEEL.

INQUIRIES SOLICITED.

CANADA WIRE GOODS MFG. CO.
HAMILTON.

THE GARLOCK PACKING CO.
Hamilton, Ontario

—Manufacturers of—

GARLOCK PACKINGS

"Be sure you get the Genuine."

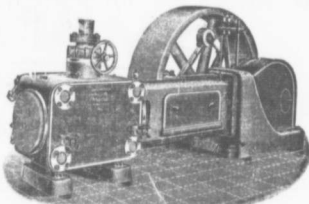
**Everything in PACKINGS,
and ENGINEERS SUPPLIES.**Used by Collieries in Lancashire, Stafford-
shire & Yorkshire**'X-TERRA'**

COLLIERY LAMP OIL

For Marsaut, Minusole Deflector or Closed Lamp.

PURE WHITE FLAME.

LOW PRICE.

E. WOLASTON, Dutton St. MANGHESTESole Representatives for Canada, AUSTEN BROS.
Halifax, N. S.**Robb Corliss Engines**Have the Armstrong-Corliss valve gear,
which will operate at a higher speed than the
ordinary release gear.This valve gear does not depend on springs
or dash pots for closing, and runs without noise.The wearing parts of the valve gear are
enclosed in a casing and run in oil so that
friction is reduced to a minimum.**ROBB ENGINEERING COMPANY, L^{td},**
AMHERST, N. S.**INTERCOLLAVIA**

THROUGH SERVICE TO

Montreal

VIA THE ONLY

ALL CANADIAN ROUTE.NO 20 CONNECTION FOR
CANADA'S FAMOUS TRAIN THE**MARITIME EXPRESS**

Leaves Stellarton 15.15

(Daily except Sunday)

Arrives Montreal 18.30

(Daily except Monday)

Parlor Car Sydney to Truro.THROUGH SLEEPING CARS AND DINING CAR
TRURO TO MONTREAL.**The Most Comfortable****Train in America.**