

yellowish, with scale of fore wings and a short subbasal streak in hind wings, brown.

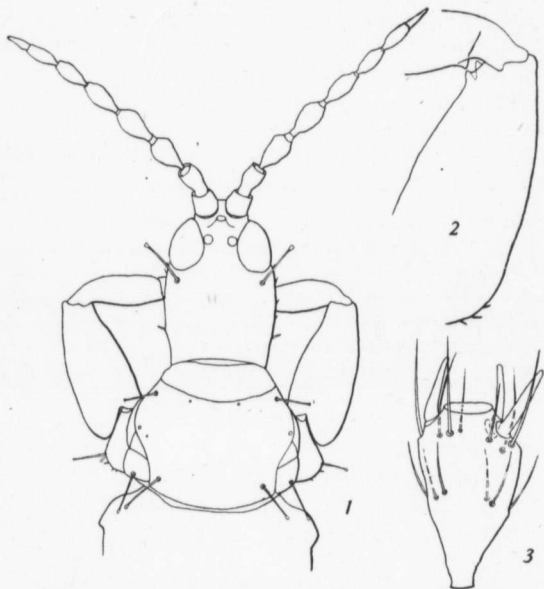


Fig. 26.—*Hoplandothrips affinis* Hood—1. Head and prothorax of female; holotype. 2. Right fore leg of male; Allotype. 3. Third segment of right antenna of female; holotype.

Head a little less than one and one-half times as long as wide and 1.5 times as long as prothorax, broadest at middle; cheeks rounded gently to eyes and to near base, thence nearly parallel, forming a neck which is narrower than greatest distance across eyes or about 0.86 the greatest width of head, set with a few small spines arising from slight tubercles, a pair at posterior sixth stronger; dorsal surface smooth and shining except at extreme base, which with the lateral surfaces is weakly subreticulate; vertex slightly and narrowly subconically produced, the anterior ocellus only