

NOTICE.

We wish to inform our City and Outport customers and friends that we are continuing our business as usual until further notice next building west of our old premises, having both a shop in the front and rear.

We have already received a complete new stock, which will be placed in the shelves during this week, but can be supplied at once if necessary. Our sale of damaged goods will be continued at the rear store until sold out.

Since the fire we have been compelled to sell at guess prices, but we feel our customers have received good value; but in case any persons think otherwise and are not satisfied, we would consider it a special favor if they would report either personally or by letter, and we shall be pleased to straighten up satisfactorily.

We have been great losers by the cause of the fire, nevertheless we do not wish to make this any excuse for not carrying out our usual policy, which has always been our aim, to give our customers good value for their money.

Our Motto: SATISFACTION GUARANTEED.

MARTIN HARDWARE CO., LTD.

Get Your Fruit and Vegetables For the Regatta.

Thursday's steamer (30th inst.) will be the last opportunity to get your Regatta requirements. We are booking orders to arrive for CALIFORNIA ORANGES, BANANAS, NEW POTATOES, NOVA SCOTIA CABBAGE (Fresh and Green).

F. McNAMARA, Queen Street.

P.O. Box 236 | SLATTERY'S | Phone 52 Wholesale Dry Goods.

TO THE CITY AND OUTPORT TRADE:

We carry in stock for Spring trade an attractive stock of Regular Piece Goods and Pound Remnants. Prices:

CHEAPEST IN THE CITY.

NOTE.—See our Special Brand of Cotton, Tweed and Denim Overalls and Jackets. Give us a call.

SLATTERY BUILDING

Duckworth and George's Streets, St. John's.

MOIR'S

Sounds Like More,
Tastes Like More,
More Centers,
More Coating,
More Popular,
More for the Money,
Many More More's.
But ONLY ONE

MOIR'S

When talking of

Chocolate.

Just Received:

GASOLENE,

in barrels and cases.

We are agents for the "Metz" Gearless Transmission Car. This Car is much more easily handled than the gear car, and can be driven by the novice after a few minutes' instruction.

COLIN CAMPBELL,
85 Water Street.

Comfort, Style, Quality,

Those are three points in which our Suits excel all others.

Our Spring Suits

have arrived, including novelty & staple shades, direct from the London market. All personally selected. No two alike. Call and convince yourself.

CHAPLIN, THE STORE THAT PLEASES



**MUIR'S
Marble Works,**
Established 1847.
Cabot Building, Water Street.

Monuments, Headstones,
Memorials, Cemetery Decorations
in Marble and Granite.
Latest and most chaste designs.
Largest stock to select from in the city.
The distinctive features of our work are Superior Carving, Finish and Materials.
Designs and price list mailed to any address.
Mail Orders have special attention.

F. CHISLETT.
April 23, 1914, 3m

Monuments, Headstones,
Memorials, Cemetery Decorations
in Marble and Granite.
Latest and most chaste designs.
Largest stock to select from in the city.
The distinctive features of our work are Superior Carving, Finish and Materials.
Designs and price list mailed to any address.
Mail Orders have special attention.

F. CHISLETT.
April 23, 1914, 3m

Monuments, Headstones,
Memorials, Cemetery Decorations
in Marble and Granite.
Latest and most chaste designs.
Largest stock to select from in the city.
The distinctive features of our work are Superior Carving, Finish and Materials.
Designs and price list mailed to any address.
Mail Orders have special attention.

F. CHISLETT.
April 23, 1914, 3m

Monuments, Headstones,
Memorials, Cemetery Decorations
in Marble and Granite.
Latest and most chaste designs.
Largest stock to select from in the city.
The distinctive features of our work are Superior Carving, Finish and Materials.
Designs and price list mailed to any address.
Mail Orders have special attention.

F. CHISLETT.
April 23, 1914, 3m

Monuments, Headstones,
Memorials, Cemetery Decorations
in Marble and Granite.
Latest and most chaste designs.
Largest stock to select from in the city.
The distinctive features of our work are Superior Carving, Finish and Materials.
Designs and price list mailed to any address.
Mail Orders have special attention.

F. CHISLETT.
April 23, 1914, 3m

Monuments, Headstones,
Memorials, Cemetery Decorations
in Marble and Granite.
Latest and most chaste designs.
Largest stock to select from in the city.
The distinctive features of our work are Superior Carving, Finish and Materials.
Designs and price list mailed to any address.
Mail Orders have special attention.

F. CHISLETT.
April 23, 1914, 3m

Monuments, Headstones,
Memorials, Cemetery Decorations
in Marble and Granite.
Latest and most chaste designs.
Largest stock to select from in the city.
The distinctive features of our work are Superior Carving, Finish and Materials.
Designs and price list mailed to any address.
Mail Orders have special attention.

F. CHISLETT.
April 23, 1914, 3m

Monuments, Headstones,
Memorials, Cemetery Decorations
in Marble and Granite.
Latest and most chaste designs.
Largest stock to select from in the city.
The distinctive features of our work are Superior Carving, Finish and Materials.
Designs and price list mailed to any address.
Mail Orders have special attention.

F. CHISLETT.
April 23, 1914, 3m

Monuments, Headstones,
Memorials, Cemetery Decorations
in Marble and Granite.
Latest and most chaste designs.
Largest stock to select from in the city.
The distinctive features of our work are Superior Carving, Finish and Materials.
Designs and price list mailed to any address.
Mail Orders have special attention.

F. CHISLETT.
April 23, 1914, 3m

Monuments, Headstones,
Memorials, Cemetery Decorations
in Marble and Granite.
Latest and most chaste designs.
Largest stock to select from in the city.
The distinctive features of our work are Superior Carving, Finish and Materials.
Designs and price list mailed to any address.
Mail Orders have special attention.

F. CHISLETT.
April 23, 1914, 3m

Monuments, Headstones,
Memorials, Cemetery Decorations
in Marble and Granite.
Latest and most chaste designs.
Largest stock to select from in the city.
The distinctive features of our work are Superior Carving, Finish and Materials.
Designs and price list mailed to any address.
Mail Orders have special attention.

F. CHISLETT.
April 23, 1914, 3m

Monuments, Headstones,
Memorials, Cemetery Decorations
in Marble and Granite.
Latest and most chaste designs.
Largest stock to select from in the city.
The distinctive features of our work are Superior Carving, Finish and Materials.
Designs and price list mailed to any address.
Mail Orders have special attention.

F. CHISLETT.
April 23, 1914, 3m

Monuments, Headstones,
Memorials, Cemetery Decorations
in Marble and Granite.
Latest and most chaste designs.
Largest stock to select from in the city.
The distinctive features of our work are Superior Carving, Finish and Materials.
Designs and price list mailed to any address.
Mail Orders have special attention.

F. CHISLETT.
April 23, 1914, 3m

Monuments, Headstones,
Memorials, Cemetery Decorations
in Marble and Granite.
Latest and most chaste designs.
Largest stock to select from in the city.
The distinctive features of our work are Superior Carving, Finish and Materials.
Designs and price list mailed to any address.
Mail Orders have special attention.

F. CHISLETT.
April 23, 1914, 3m

Monuments, Headstones,
Memorials, Cemetery Decorations
in Marble and Granite.
Latest and most chaste designs.
Largest stock to select from in the city.
The distinctive features of our work are Superior Carving, Finish and Materials.
Designs and price list mailed to any address.
Mail Orders have special attention.

F. CHISLETT.
April 23, 1914, 3m

Monuments, Headstones,
Memorials, Cemetery Decorations
in Marble and Granite.
Latest and most chaste designs.
Largest stock to select from in the city.
The distinctive features of our work are Superior Carving, Finish and Materials.
Designs and price list mailed to any address.
Mail Orders have special attention.

F. CHISLETT.
April 23, 1914, 3m

Monuments, Headstones,
Memorials, Cemetery Decorations
in Marble and Granite.
Latest and most chaste designs.
Largest stock to select from in the city.
The distinctive features of our work are Superior Carving, Finish and Materials.
Designs and price list mailed to any address.
Mail Orders have special attention.

F. CHISLETT.
April 23, 1914, 3m

Monuments, Headstones,
Memorials, Cemetery Decorations
in Marble and Granite.
Latest and most chaste designs.
Largest stock to select from in the city.
The distinctive features of our work are Superior Carving, Finish and Materials.
Designs and price list mailed to any address.
Mail Orders have special attention.

F. CHISLETT.
April 23, 1914, 3m

Monuments, Headstones,
Memorials, Cemetery Decorations
in Marble and Granite.
Latest and most chaste designs.
Largest stock to select from in the city.
The distinctive features of our work are Superior Carving, Finish and Materials.
Designs and price list mailed to any address.
Mail Orders have special attention.

F. CHISLETT.
April 23, 1914, 3m

Monuments, Headstones,
Memorials, Cemetery Decorations
in Marble and Granite.
Latest and most chaste designs.
Largest stock to select from in the city.
The distinctive features of our work are Superior Carving, Finish and Materials.
Designs and price list mailed to any address.
Mail Orders have special attention.

F. CHISLETT.
April 23, 1914, 3m

Monuments, Headstones,
Memorials, Cemetery Decorations
in Marble and Granite.
Latest and most chaste designs.
Largest stock to select from in the city.
The distinctive features of our work are Superior Carving, Finish and Materials.
Designs and price list mailed to any address.
Mail Orders have special attention.

F. CHISLETT.
April 23, 1914, 3m

Monuments, Headstones,
Memorials, Cemetery Decorations
in Marble and Granite.
Latest and most chaste designs.
Largest stock to select from in the city.
The distinctive features of our work are Superior Carving, Finish and Materials.
Designs and price list mailed to any address.
Mail Orders have special attention.

F. CHISLETT.
April 23, 1914, 3m

Monuments, Headstones,
Memorials, Cemetery Decorations
in Marble and Granite.
Latest and most chaste designs.
Largest stock to select from in the city.
The distinctive features of our work are Superior Carving, Finish and Materials.
Designs and price list mailed to any address.
Mail Orders have special attention.

F. CHISLETT.
April 23, 1914, 3m

Monuments, Headstones,
Memorials, Cemetery Decorations
in Marble and Granite.
Latest and most chaste designs.
Largest stock to select from in the city.
The distinctive features of our work are Superior Carving, Finish and Materials.
Designs and price list mailed to any address.
Mail Orders have special attention.

F. CHISLETT.
April 23, 1914, 3m

Monuments, Headstones,
Memorials, Cemetery Decorations
in Marble and Granite.
Latest and most chaste designs.
Largest stock to select from in the city.
The distinctive features of our work are Superior Carving, Finish and Materials.
Designs and price list mailed to any address.
Mail Orders have special attention.

F. CHISLETT.
April 23, 1914, 3m

Monuments, Headstones,
Memorials, Cemetery Decorations
in Marble and Granite.
Latest and most chaste designs.
Largest stock to select from in the city.
The distinctive features of our work are Superior Carving, Finish and Materials.
Designs and price list mailed to any address.
Mail Orders have special attention.

F. CHISLETT.
April 23, 1914, 3m

Monuments, Headstones,
Memorials, Cemetery Decorations
in Marble and Granite.
Latest and most chaste designs.
Largest stock to select from in the city.
The distinctive features of our work are Superior Carving, Finish and Materials.
Designs and price list mailed to any address.
Mail Orders have special attention.

F. CHISLETT.
April 23, 1914, 3m

Monuments, Headstones,
Memorials, Cemetery Decorations
in Marble and Granite.
Latest and most chaste designs.
Largest stock to select from in the city.
The distinctive features of our work are Superior Carving, Finish and Materials.
Designs and price list mailed to any address.
Mail Orders have special attention.

F. CHISLETT.
April 23, 1914, 3m

Monuments, Headstones,
Memorials, Cemetery Decorations
in Marble and Granite.
Latest and most chaste designs.
Largest stock to select from in the city.
The distinctive features of our work are Superior Carving, Finish and Materials.
Designs and price list mailed to any address.
Mail Orders have special attention.

F. CHISLETT.
April 23, 1914, 3m

Monuments, Headstones,
Memorials, Cemetery Decorations
in Marble and Granite.
Latest and most chaste designs.
Largest stock to select from in the city.
The distinctive features of our work are Superior Carving, Finish and Materials.
Designs and price list mailed to any address.
Mail Orders have special attention.

F. CHISLETT.
April 23, 1914, 3m

Just Received,

EXPS. S. "Cacouna,"

100 BARRELS

MORRIS & Co.'s

Spare RIBS.

Harvey & Co., Ltd.



TRAPNELL The Eyesight Specialist

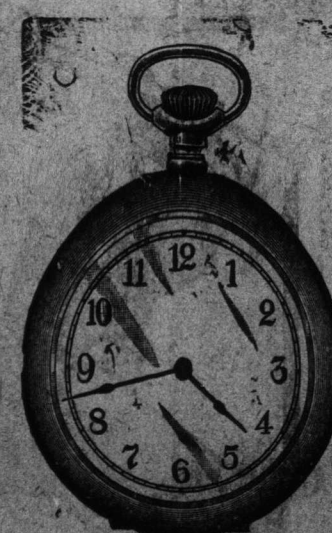
Examines the eyes without
DRUGS, DROPS or DANGER.
He not only finds the trouble, but with his perfect optical machinery he can grind the correct lenses to suit the most complicated cases, and do it quickly.

There was a time when all compound lenses had to be sent out of the country for, involving a delay of three or four weeks, but that day has passed; an hour or two is sufficient to produce any lens that may be called for.

Prescriptions filled or broken lenses replaced if you have the pieces.

TRAPNELL

IS YOUR MAN WHEN EYE TROUBLE APPEARS.



FREE! FREE!!

Is Your Watch Balking and Troublesome?

If so, there is no need to have it in such condition. Just you leave it in our care and we will free it from all trouble. We employ capable and competent workmen, who are both willing and able to free your watch from all unnecessary bother. A trial will convince you of our ability.

W. & R. ENGLISH,

Watchmakers & Jewellers,
406 WATER ST., ST. JOHN'S, Nfld.
P. O. Box 447.

Grove Hill Bulletin

ORDER YOUR BULBS THIS WEEK.

In September we shall be prepared to deliver to those who order at once Dutch Bulbs of the finest quality; Hyacinths, Tulips, Narcissus, Daffodils, Snowdrops, Crocuses, Iris, Frezias, etc.

With each parcel of Bulbs will be enclosed a slip containing practical hints on Bulb Culture. Prices will be very reasonable. Write for them or call up phone 247.

Phone 247.

J. McNEIL,

Waterford Bridge Road.

Waterford Bridge Road.

Waterford Bridge Road.

Waterford Bridge Road.

Waterford Bridge Road.

Waterford Bridge Road.

Waterford Bridge Road.

Waterford Bridge Road.

Waterford Bridge Road.

Waterford Bridge Road.

Waterford Bridge Road.

Waterford Bridge Road.

Waterford Bridge Road.

Waterford Bridge Road.

Waterford Bridge Road.

Waterford Bridge Road.

Waterford Bridge Road.

Waterford Bridge Road.

Waterford Bridge Road.

Waterford Bridge Road.

Waterford Bridge Road.

Waterford Bridge Road.

Waterford Bridge Road.

Waterford Bridge Road.

Waterford Bridge Road.

Waterford Bridge Road.

Waterford Bridge Road.

Waterford Bridge Road.

Waterford Bridge Road.

Waterford Bridge Road.

Waterford Bridge Road.

Waterford Bridge Road.

Waterford Bridge Road.

Waterford Bridge Road.

Waterford Bridge Road.

Waterford Bridge Road.

Waterford Bridge Road.

Waterford Bridge Road.

Waterford Bridge Road.

Waterford Bridge Road.

Waterford Bridge Road.

SALT AFLOAT

Just arrived per s.s. Damara a cargo of

Torrevisa Salt

Highly recommended as the best and purest Salt for fishery purposes.

Lowest market prices.

M. MOREY & CO.
Office: Queen Street.

Per S.S. "Stephano" from New York.

Oranges, Plums,
Lemons, Pears,
Bananas,
Celery, Tomatoes, New Potatoes,
Beetroot, Carrots, Beans,
New York Chicken,
New York Turkeys,
New York Fresh Corned Beef.

JAMES STOTT

In a few days the import duty on cabbage will be doubled. We offer 50 barrels good Cabbage at the lower tariff, cheap; also just in Heavy Black Oats and Canada Cheese, handy, small sizes, and a few American Squash.

EDWIN MURRAY'S STORE.
(Strictly Wholesale.)

OATS! HAY!

1000 bags Black Oats,

1000 bags Mixed Oats,

1000 bales Canadian Hay.

GEO. NEAL

FREW'S MID-SUMMER SALE!

Special for this week:

Ladies' Stylish Ready-to-Wear STRAW HATS,

Regular prices 70c., 80c., 90c. to \$1.30.

Sale Price: 45 cents.

Shop early and get the choice.

William Frew

Choice Boneless BEEF

Retailing at

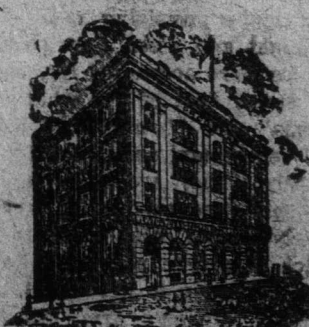
10c. per lb.

BISHOP, SONS & COMPANY,

Limited.

RETAIL STORE.

OUR CLOTHES



represent a conscientious effort on our part, to give you maximum value for your money.

EACH SEASON

we carefully choose the best quality-fabric in the most attractive patterns and colors and manufacture into Suits, combining the latest

Fashion and Fit. Ask your dealer for our popular Brands, AMERICUS, TRUEFIT FITTENS, RM, STIL-ENFIT, PROGRESS.

Made only by

Newfoundland Clothing Co., Limited.

Advertise in the Telegram.