

Drummond Place, Adelaide street to 198 feet north, cost \$1,021; Ontario street, Front to King, cost \$1,373. Tar macadam roadways—Saulter street, Queen to 835 feet south, cost \$3,932; Augusta avenue, St. Patrick to College, cost \$9,597. Brick track allowances—Front street, Simcoe to Bathurst, cost \$21,037; Avenue road, Dupont to 260 feet south of city limits, cost \$5,549. Granite sets track allowance—Bathurst street; King to Front, cost \$7,546. Sewers—Grace street,

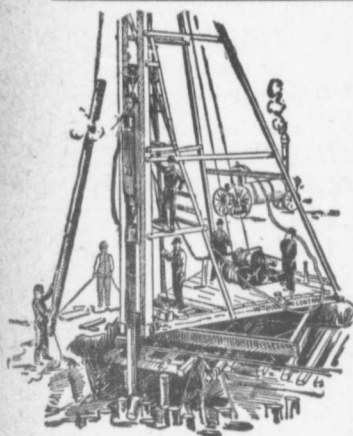
College to 470 feet north, cost \$1,320; Poucher street, Smith to Pape avenue, cost \$1,100. Concrete sidewalks—Markham street, east side, Robinson to Arthur, cost \$957; Davenport road, south side, Yonge to Hazelton avenue, cost \$1,541; George street, east side, Queen to north limit house No. 7 Wilton Crescent, cost \$1,703; George street, west side, Queen to Wilton avenue, cost \$1,919; Cumberland street, both sides, Yonge to Avenue road, cost \$4,864; Dovercourt road, east

side, Argyle to Dundas, cost \$1,629; Richmond street, north side, John to Peter, cost \$1,018.

CONTRACTS AWARDED.

AMHERST, N.S.—Erection of hospital building: Rhodes, Curry & Co., contractors.

CREEMOKE, ONT.—Bank of Toronto building: Eli Holmes, of Collingwood, contractor.



PILE DRIVING

on land or water by Steam Pile Drivers or Drop Hammers.

**Portable Boilers
Hoisting Engines
Pumping Machinery**

TO LET

Bridge Building, Trestle Work, Wharves, Dams, Diving Submarine Work and General Contracting.

WM. HOOD & SON

10 Richmond Sq. - MONTREAL

DEBENTURES

Municipalities contemplating the issue of Debentures will find it to their advantage to consult with

G. A. STIMSON & CO.

Investment Dealers

24 and 26 King St. W. - TORONTO

The DeLano-Osborn Engineering Co., Limited
506 Manning Chambers, Toronto.

CONSULTING AND DESIGNING ENGINEERS.

Consultations, Plans, Specifications and Superintendence for Bridgework, Steel Building Frames, Portland Cement Plants, Power and Miscellaneous Plants, Water Power Development, Electric Railways, etc.

*Inspectors of Structural Material
and of Railway Equipment.*

**Pittsburgh Testing Laboratory,
LIMITED**

*Inspecting and Metallurgical
Engineers and Chemists*

SPECIALTIES: Inspection of RAILS and all material for BRIDGES, BUILDINGS, and other structures, cast iron pipe, wood and steel railroad cars.

MANUFACTURE AND ERECTION.
Expert examination and reports, chemical analyses and physical tests of all kinds.

Cement Testing.

146 St. James Street, - Montreal, P.Q.

THE STEEL "CHAMPION" IS THE KING OF GRADERS

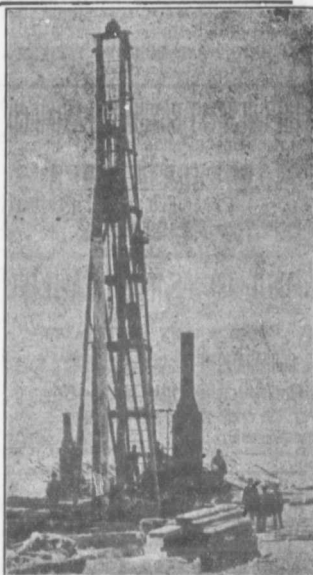
"CHAMPION" Road Machines are now in use in every Province of Canada.



Address for 20th Century Catalogue

The Good Roads Machinery Co., Limited

(Late Killey-Beckett Engine Works)
144 YORK STREET - HAMILTON, ONT.



PILE DRIVING

and Foundation Work.

By 5-ton Automatic Steam Pile Hammer, Water Jet or Drop Hammers, Dock Building, Submarine Work and Dredging.

BUILDING MOVER AND WRECKER

General Contracting.

JNO. E. RUSSELL, - Toronto

906 Queen St. E.—Phone M. 2007.

Pumps for Waterworks

**Waterworks Systems
Installed**

*Steam, Hydraulic, Electric,
Gasoline, Air Lift and
Automatic Rams.*

**Steam Boilers and
Filters**

Write for Prices and Particulars

The John McDougall

GALEDONIAN IRON WORKS CO., LIMITED

MONTREAL, P.Q.

