

Issued Each Week Only One Dollar a Year

VOL. XXX.

N. Y.

NUMBER 1

41745

Dairy Commissioner
Dec 10

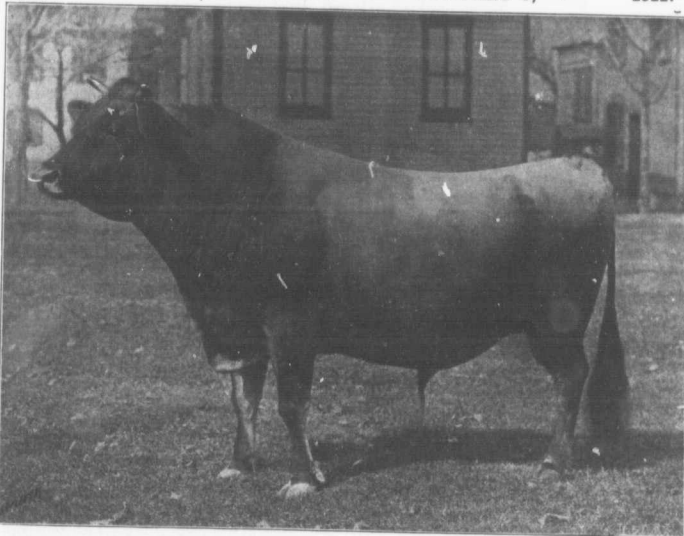
FARM AND DAIRY

RURAL HOME

PETERBORO, ONT.

JANUARY 5,

1911.



A STUDY IN MASCULINITY, DAIRY AND JERSEY BREED TYPE

A bull showing strong masculine characteristics yet withal conforming to dairy and breed type and backed by an ancestry of great producers on his dam's side, is the kind the progressive dairyman seeks to place at the head of his herd. Pedigree should not be the whole argument that induces one to decide upon a bull. Individuality counts. The average dairyman, however, in choosing a sire is reasonably certain to go right if he places first importance on production. The illustration herewith presents a fine study in individuality. Note the strong masculine bearing of this Jersey and his conformity to breed and dairy type.

DEVOTED TO
BETTER FARMING AND
CANADIAN COUNTRY LIFE