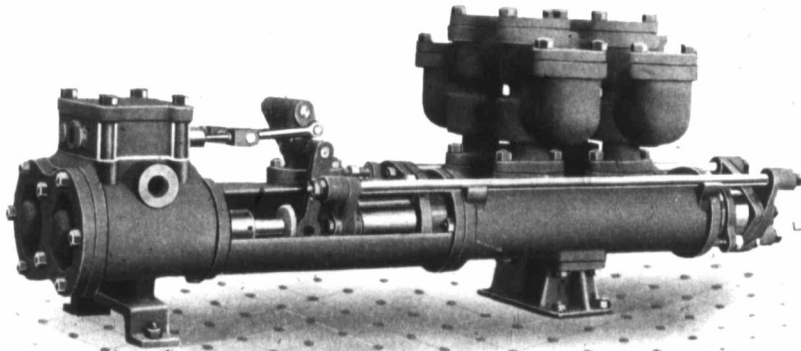


29-8 Single and Duplex Steam Pumps.



WITH POT VALVES.

DUPLEX OUTSIDE PACKED PLUNGER PUMP.

This pump is fitted with independent pot valves, a form of water valve that has long been popular with engineers. The advantages gained by the use of this form of valve are: quiet action, great durability, and the special facilities afforded for examination. The valves work on gun metal seats, and can be taken out readily after the covers are removed. The design, as shown, is of very great strength and the utmost possible compactness, the greatest care having been taken to attain these ends. They are manufactured of selected iron, very heavy castings are used throughout, and all the details will be found, on examination, to be of superior workmanship and material.

SIZES AND CAPACITIES:

Code Word.	Steam Cylinder.	Water Cylinder or Plungers.	Stroke.	Gals. per Stroke, each Plunger.	Capacity per Minute at Ordinary Speed.	Steam Pipe.	Exhaust Pipe.	Suction Pipe.	Delivery Pipe.
Parget.	6	3	7	.22	125 strokes, 55 gals.	$\frac{3}{4}$	1	2	$1\frac{1}{2}$
Parian.	6	$3\frac{1}{4}$	7	.34	125 strokes, 85 gals.	$\frac{3}{4}$	1	2	$1\frac{1}{2}$
Parlet.	$7\frac{1}{2}$	$3\frac{1}{4}$	10	.30	100 strokes, 72 gals.	1	$1\frac{1}{2}$	2	$1\frac{1}{2}$
Parley.	$7\frac{1}{2}$	$3\frac{1}{4}$	10	.47	100 strokes, 94 gals.	1	$1\frac{1}{2}$	$2\frac{1}{2}$	2
Parro.	$7\frac{1}{2}$	$4\frac{1}{2}$	10	.60	100 strokes, 138 gals.	1	$1\frac{1}{2}$	$2\frac{1}{2}$	2
Pars.	8	4	12	.65	100 strokes, 130 gals.	1	$1\frac{1}{2}$	3	$2\frac{1}{2}$
Parson.	8	$4\frac{1}{2}$	12	.82	100 strokes, 164 gals.	1	$1\frac{1}{2}$	3	$2\frac{1}{2}$
Parti.	8	5	10	.85	100 strokes, 170 gals.	1	$1\frac{1}{2}$	3	$2\frac{1}{2}$
Partnes.	8	5	12	1.02	100 strokes, 204 gals.	1	$1\frac{1}{2}$	$3\frac{1}{2}$	3
Party.	10	4	12	.65	100 strokes, 130 gals.	$1\frac{1}{4}$	2	3	$2\frac{1}{2}$
Pashia.	10	$4\frac{1}{2}$	12	.82	100 strokes, 164 gals.	$1\frac{1}{4}$	2	3	$2\frac{1}{2}$
Pass.	10	5	12	1.02	100 strokes, 204 gals.	$1\frac{1}{4}$	2	$3\frac{1}{2}$	3
Passing.	10	6	12	1.47	100 strokes, 294 gals.	$1\frac{1}{4}$	2	$3\frac{1}{2}$	3
Pastel.	12	5	12	1.02	100 strokes, 204 gals.	$1\frac{1}{2}$	$2\frac{1}{2}$	$3\frac{1}{2}$	3
Pastor.	12	6	12	1.47	100 strokes, 294 gals.	$1\frac{1}{2}$	$2\frac{1}{2}$	$3\frac{1}{2}$	3
Pasture.	12	7	12	2.00	100 strokes, 400 gals.	$1\frac{1}{2}$	$2\frac{1}{2}$	5	4
Pate.	12	8	12	2.61	100 strokes, 522 gals.	$1\frac{1}{2}$	$2\frac{1}{2}$	5	4
Path.	14	5	12	1.02	100 strokes, 204 gals.	2	3	$3\frac{1}{2}$	3
Patient.	14	6	12	1.47	100 strokes, 294 gals.	2	3	$3\frac{1}{2}$	3
Patriotic.	14	7	12	2.00	100 strokes, 400 gals.	2	3	5	4

FOR LARGER SIZES SEE NEXT PAGE.