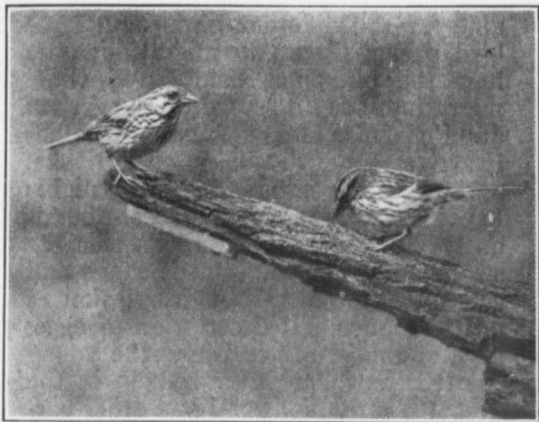

The Message of the Rossignol



A PAIR OF SONG SPARROWS AT FEEDING STATION

laying of eggs; (5) hatching and rearing the young; (6) molting, and (7) fall migrations, southward.

The special duties of all members should be to (1) make a complete list of all the birds found in your neighborhood, also a census of the nests; (2) find out what birds are decreasing, and why; (3) make a list of birds you would like to see increased; (4) find out the enemies of insectivorous and song-birds in your immediate neighborhood, (5) see if the birds have proper nesting facilities; (6) put up bird houses suit-