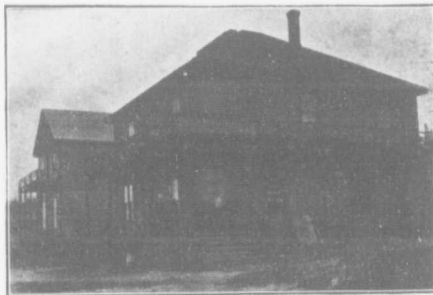


A year ago the above firm purchased the business, which includes a very complete general store, carrying a full line of dry goods, groceries, hardware, boots and shoes, furnishings, etc. The firm also own and operate a first class hotel, butcher shop, a bonded warehouse, concert hall and wharf. The post office is also connected with their store. The business is particularly substantial and every department is supervised by the members of the firm, who take an active part in the management of the business, and both are well trained for the work, having been closely identified with the wholesale and retail trade on the coast for a number of years, Mr. Bishop being connected with the R. P. Rithet Co., Victoria, for a number of years.

WILSON HOTEL, UNION BAY.

Upon alighting from the steamer or train at Union Bay the strangers hie themselves to the modern hostelry which is the subject of this sketch, and there receive a hearty welcome from the jovial proprietor, Mr. John Humphrey. This hotel is unquestionably the popular headquarters of the travelling public and can be recommended as a first class place at which to stop while in Union Bay. Mr. Humphrey has conducted the hotel for the

past ten years and has gained an enviable reputation as a host. He is a gentleman who has a large acquaintance throughout the province and is well and most favorably known.



Wilson Hotel, Union Bay.



CITY OF CUMBERLAND



Comox district is noted for its great coal deposits, its timber wealth and agricultural areas. A city of note in this district and the largest and most important town in the northern section of Vancouver Island is Cumberland, with a population of 1,800 prosperous and thrifty citizens. It is the seat of a great coal mining industry owned and operated by Hon. James Dunsmuir, Lieutenant-Governor of British Columbia. Four large mines are in constant

operation here, namely, Nos. 4, 5, 6 and 7. The combined output of these mines average 1,500 tons per day and the coal is conveyed by rail from Cumberland, which is situated ten miles inland, to Union Bay for shipment to all parts of the world.

Tributary to Cumberland is the rich and fertile farming district known as the Courtenay Valley, and the volume of trade which flows into the town from this settlement alone makes it a busy