

BUYERS' DIRECTORY

ACCOUNTANTS.

Gamble & Gladwell.
McIntosh & Hyde.
Ross, H. J.
Stein & Co.

AIR COMPRESSORS.

Belliss & Morecom.
Fairbanks-Morse Co.

ARTIFICIAL STONE.

Roman Stone Co.
Morrison Co., T. A.

AUTOMATIC TELEPHONES.

Canadian Machine Telephone Co.

BARRISTERS.

Lighthall & Harwood.

BATTERIES, DRY.

Can. Fairbanks-Morse Co.
Canadian Independent Telephone Co.

BELTING.

Can. Fairbanks-Morse Co.
McLaren Belting Co., J.C.

BOILERS.

Babcock & Wilcox.
Robb Engineering Co.
Waterous Engine Works Co.

BONDS, ETC.

Bank of Montreal.
Bank of Ottawa.
Bank of Toronto.
Brent, Noxon & Co.
Canada Securities Corpor'n.
Can. Bank of Commerce.
City & District Savings Bank.
Dominion Bond Co.
Dominion Securities Corp.
Imperial Bank.
Merchants Bank.
Ross, H. J.
Wood, Gundy & Co.

BRIDGES.

Canadian Bridge Co.
Cleveland B. & Eng. Co.
Dominion Bridge Co.

CABLES.

Brit. Insulated Co.
Can. Indep. Telephone Co.
Imperial Wire & Cable Co.
Phillips Elec. Works, E.F.
Standard Underground Cable Co. of Canada, Ltd.

CAST IRON PIPES.

Can. Iron Corporation.
Canadian Fairbanks Morse Co.

CEMENT,

Canada Cement Company.

CONCRETE STEEL DAMS.

Ambursen Hydraulic Const. Co.

CONCRETE MIXERS.

Canadian Fairbanks Morse Co.

London Concrete Machy. Co.
Mussens, Limited.

CONCRETE

REINFORCEMENT

Can. Wire & Iron Goods Co.

CULVERTS.

Pedlar People.

DUST PREVENTIVE.

Barrett Mfg. Co.

ELECTRIC MOTORS.

Can. Fairbanks-Morse Co.
Northern Elec. & Mfg. Co.

ELECTRIC WIRE.

Can. British Insulated Co.
Canadian Indep. Teleph. Co.
Canadian Machine Teleph. Co.
Imperial Wire & Cable Co.
Philips Electrica Works, E.F.
Standard Underground Cable Co. of Canada, Ltd.

ELECTRICAL SUPPLIES.

Can. Fairbanks-Morse Co.
Northern Elec. & Mfg. Co.

ENGINES.

Babcock & Wilcox.
Bellis & Morecom.
Robb Engineering Co.
Waterous Engine Works Co.

ENGINEERS & CONTRACTORS.

Aqueducts, Limited.
Austen & Chapdelaine.
Barrow, E. G.
Bayfield & Archibald.
Beaubien, De Gaspé.
Bowering & Logan.
Bowman & Connor.
Brandeis, Charles.
Brown, W. M.
Burnett, Geoffrey K.
Can. Inspection and Testing Laboratories.
Cartwright, Mathieson & Co.
Chipman & Power.
Cleveland & Cameron.
Dietrich, W. N.
Dutcher, Foreman & Gregory.
Fairchild, Jones & Taylor.
Francis, Walter J. & Co.
Frew, J. F.
Fuze & Scott.
Galt Eng. Co., The John Higman & Doctor.
Isdale, John S.
Jacobs & Davies, Incp.
Keefer & Keefer.
Laurie & Lamb.
R. S. Lea and H. S. Ferguson
Leofred, A.
Mace, T. Harry.
Mather, Yuill & Co.
McConnell, B. D.
McCulloch, A. L.
Moon & Silverton
Murphy & Underwood.
Murray, T. Aird.
Phillips, Stewart & Lee.
Potter, Alex.
Ross & Co., R. A.
Smith, Kerry & Chace.
Surveyer & Frigon.
Topp, Charles H.
Wright, P. Mortin.
Young, C.R.

ENGINEERS, TELEPHONE.

Clement, Edw. E.
Dagger, F.
McMeen & Miller..
Zabel, Max. W.

ENGRAVERS.

Amer. Bank Note Co.

FIRE ALARMS.

Northern Elec. & Mfg. Co.

FIRE DEPT. SUPPLIES.

H. K. Martin.
Waterous Engine Works Co.

FIRE ENGINES.

Waterous Engine Works Co.

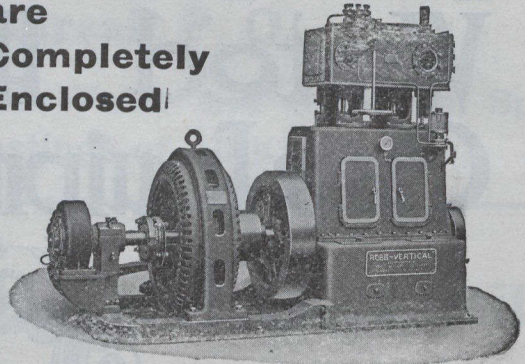
GAS ENGINES.

Can. Fairbanks-Morse Co.

For Cleanliness and the
Protection of Moving Parts

ROBB COMPOUND ENGINES

are
Completely
Enclosed!



INTERNATIONAL ENGINEERING WORKS, Ltd.

Owners of works formerly of

ROBB ENGINEERING COMPANY

Works : AMHERST, N. S., CANADA
South Framingham, Mass.

SOLE CANADIAN AGENTS FOR

C. A. Parsons & Co., Newcastle-on-Tyne

Turbines, Turbo Electric Generators, Turbo Pumps, Blowers
and Compressors

39-17

THE DOMINION WOOD PIPE COMPANY LIMITED

New Westminster, B. C.

Manufacturers of

DOUBLE WIRE WOUND



AND

Cast Iron Specials, Valves, Hydrants, Etc.

WELL DRILLING

TOWN WELLS A SPECIALTY

We have the latest scientific instruments for locating subterranean
water courses before drilling.

If you need water, you need us.

**SASKTCHWAN WELL DRILLING CO.,
ROULEAU, SASK.**