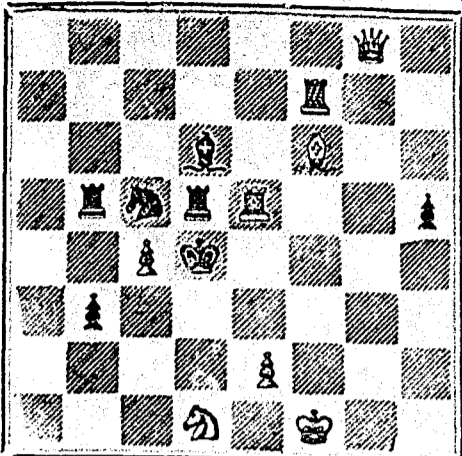


(PROBLEM No. 263.)

By J. W. Abbott.

BLACK.



WHITE

White to play and mate in two moves.

GAME 393RD.

(From Turf, Field and Farm.)

CHESS IN LONDON.

A beautiful game, played on Monday last, between Messrs. Blackburne and Bird, at Simpson's Chess Divan. It was the first of a little match of three games, in which Mr. Bird backs himself for a small stake, at the rate of 2 to 1, to conduct the defense of the Evans Gambit, while Mr. Blackburne has undertaken the attack on those terms.

(Evans' Gambit.)

White.—(Mr. Blackburne.) Black.—(Mr. Bird.)

- |                     |                      |
|---------------------|----------------------|
| 1. P to K4          | 1. P to K4           |
| 2. Kt to K B3       | 2. Kt to Q B3        |
| 3. K to B4          | 3. B to B4           |
| 4. P to Q Kt4       | 4. B takes P         |
| 5. P to Q B3        | 5. B to B3           |
| 6. Castles          | 6. P to Q3           |
| 7. P to Q4          | 7. P takes P         |
| 8. P takes P        | 8. B to Q Kt3        |
| 9. P to Q5          | 9. Kt to Q R4        |
| 10. B to Kt2        | 10. Kt to K2         |
| 11. B to Q3         | 11. P to K B3        |
| 12. Kt to K R4      | 12. Castles          |
| 13. Kt to Q2        | 13. Kt to K Kt3      |
| 14. Kt takes Kt     | 14. P takes Kt       |
| 15. Kt to K B3      | 15. P to K Kt4       |
| 16. R to Q B sq     | 16. B to K Kt5       |
| 17. B to K2         | 17. R to K sq        |
| 18. Q to Q B2       | 18. P to Q B3        |
| 19. P takes P       | 19. Kt takes P       |
| 20. K R to Q sq     | 20. Q to K2          |
| 21. Kt takes K Kt P | 21. P takes Kt       |
| 22. B takes B       | 22. Q takes P        |
| 23. Q to Q Kt3 (ch) | 23. K to R sq        |
| 24. Q to K R3 (ch)  | 24. K to K sq        |
| 25. B to K B5       | 25. Q to K K5        |
| 26. Q to Q Kt3 (ch) | 26. K to R sq        |
| 27. Q to K B7       | 27. Kt to K4         |
| 28. B takes Kt      | 28. R takes B        |
| 29. B to Q R8       | 29. Q to K B5        |
| 30. P takes Q Kt P  | 30. P to K Kt3       |
| 31. R to Q B2       | 31. Q to K Kt5       |
| 32. P to Kt3        | 32. Q to Kt sq       |
| 33. Q takes R       | 33. R to K Kt4       |
| 34. R takes R       | 34. Q takes R (ch)   |
| 35. K to Kt4        | 35. Q to K R5 (ch)   |
| 36. K to B sq       | 36. Q to K B6 (ch)   |
| 37. K to K2         | 37. Q takes B P (ch) |
| 38. K to Q2         | 38. Q to Q B4 (ch)   |
| 39. K to Q B3       | 39. Q to Q Kt5 (ch)  |
| 40. K to Q2         | 40. Q to Q Kt5 (ch)  |
| 41. K to Q3         | 41. Q to K B7 (ch)   |
| 42. K to K2         | 42. Q to Q5 (ch)     |
| 43. K to Q3         |                      |
| 44. K to K2         |                      |

NOTES.

Owing to the want of space we are compelled to omit the notes appended to this game.

SOLUTION.

Solution of Problem No. 261.

- |               |            |
|---------------|------------|
| WHITE.        | BLACK.     |
| 1. B to Q Kt3 | 1. K moves |
| 2. B takes P  | 2. K moves |
| 3. B to Q sq  | 3. P moves |
| 4. R mates    |            |

Solution of Problem for Young Players No. 259

- |               |             |
|---------------|-------------|
| WHITE.        | BLACK.      |
| 1. Kt to Q B5 | 1. Any move |
| 2. Mates acc. |             |

PROBLEMS FOR YOUNG PLAYERS, No. 260

- |                |               |
|----------------|---------------|
| WHITE.         | BLACK.        |
| K at K4        | K at Q3       |
| R at Q B5      | Pawns at K R4 |
| B at K Kt4     | and Q Kt3     |
| Kt at Q5       |               |
| Pawns at K Kt4 |               |
| and Q B4       |               |

White to play and mate in two moves.

THE DUCHESS CORSET.

Awarded Extra Prize, Grand Dominion Exhibition.

Is specially designed for Stout Ladies, to meet the requirements of fashion. Is not only elegant in form, but very comfortable to wear. Once worn, will wear no other.

Saleen Jean, \$2.50; Coutil, \$3.50 and upwards.

Sent by post to any part of the Dominion on receipt of price and address.

Send measure Round the Waist and Bust, tight—not too tight—also length of Waist under arm and length of Front.

Ottawa Corset Factory, 70 Sparks Street, Ottawa, Ont.

20 Lovely Rosebud Chromo Cards or 20 Floral Motto with name 10c. Nassau Card Co., Nassau, N.Y.

60 Perfumed Cards—Motto, Lilly, Floral, Rosebud—with name and case, 10 cts. AETNA CARD CO., Clintonville, Ct.

50 Perfumed Chromo and Lace Cards, name in gold in fancy case, 10c. Davis & Co., Northford, Ct.



## TENDERS.

SEALED TENDERS, addressed to the undersigned and marked "Indian Tenders," will be received at this office until noon of the 1st MARCH, 1880, for supplying the following articles, or any of them, at the undermentioned places, or any of them, by the 1st JULY next, in such quantities as may be required; also, for supplying any of the same articles or others described in Schedules obtainable at this office, or any of the places in the Northern or Southern districts of the North-West Territories, and at any date or dates between the 1st JUNE, 1880, and the 30th MAY, 1881, and in such quantities as may be ordered:—

## MANITOBA.

St. Peter's, Fort Alexander, Broken Head River, Roseau River, Swan Lake, Sandy Bay, Long Plain.

NORTH-WEST TERRITORIES, LAKE MANITOBA AND THE WEST OF IT.

Manitoba House, Ebb and Flow Lake, Lake St. Martin, Little Saskatchewan, Water Hen Lake, Riding Mountain.

## LAKE WINNIPEG.

Black River, Beren's River, Fisher's River, Grand Rapids, The Pas Pas Mountains, Norway House, Cross Lake, Dog Head, Blood Vein River, Big Island, Sandy Bar, Jack Fish Head, Moose Lake, Cumberland.

## LAKE OF THE WOODS AND EAST OF IT.

Shoal Lake, Couchiching, Lac Seul, Rat Portage, Mattawan, Islington, Assabaskung.

NORTH-WEST TERRITORIES, NORTHERN DISTRICT.

Fort Ellice, Touchwood Hills, Prince Albert and Edmonton.

NORTH-WEST TERRITORIES, SOUTHERN DISTRICT.

Fort Walsh, Fort McLeod.

Flour,	132,800 lbs.	Whiffletrees (for	
Ten,	6,736 "	ploughs),	130
Sugar,	5,075 "	Whiffletrees (for	
Tobacco,	3,989 "	barrows),	16
Bacon,	30,196 "	Seythe Stones,	144
Beef,	15,002 "	Sickles,	258
Pork,	20,750 "	Grain Cradles,	135
Woolen Shirts,	250	Seythes for du.	135
Stout Trowsers,	250	Flails,	202
Canvas Shirts,	250	Hoes (steel)	
Canvas Trowsers,	250	Garden,	458
Meccasies,	500 prs.	Do. (10 in. turnip),	178
Ploughs,	21	Shovels (steel),	58
Hurrows,	45	Do. (scoop),	28
Seythes,	209	Blacksmiths' Tongs,	21
Smiths,	209	Pickaxes,	36
Hay Forks,	132	Hay Knives,	23
Axes,	165	Shingle Nails,	2,500 lbs.
Hoes,	1,134	Borax,	92 "
Spades,	572	Blue Stone,	400 "
Grindstones,	18	Fanning Mills,	22
Cross Cut Saw		Pit Saw Files,	180
Files,	144	Pit Saws,	24
Hand Saw Files,	120	C. C. Saws,	24
Carts,	29	Hand Saws,	56
Cart Harness,	29	Hammers,	12
Light Waggon,	6	Angers,	120
Double Harness,	6	Rakes,	171
Plough Harness,	38	Nose Bags,	84
Plough Harness,	38	Plough Lines,	49
Or,	56	Tool Chests,	22
Do. Pony,	54	Frogs,	26
Sweet Collars,	88	Single Barrel	
Ploughs, break-		Guns,	45
ing,	125	Double do. do.,	45
Plough Points,		Gun Caps,	830
extra,	360	Ammunition, Twine,	

4 Hand Saws 20 in., 1 Equal in quality to 5 x 5.

4 Rip do. 28 "

4 Jack Planes, ordinary C. S., double irons with stand.

4 Steel Squares, 24 by 18, divided to 2 in.

4 Sets Angers, 1 1/2 in., 1 1/4, 1 1/2, 1 3/4, short convex eye cut bright.

4 Drawing Knives, extra quality, solid C. S., 13 in.

4 Cast Steel Hatch Axes, handled, best quality.

4 Adzes, handled, (house carpenter's best C. S.)

4 Solid Steel Claw Hammers, Canadian patent.

Chisels (socket firmer) with ringed handles 1 1/2 in., 1 3/4 in., 1 1/2 in., 1 3/4 in., 1 1/2 in. socket, cast steel handles.

4 Oil Stones.

4 Oil Cans.

4 Scratch Aids.

8 Gimlets, 1 1/2, 1 1/4.

4 C. S. Compasses or Dividers.

42 Foot Rules, 4 fold arch joints.

4 Shaving Razors.

Forms of tender and schedules containing full particulars may be obtained on application at this office, whereat, as well as at the Indian Office, Winnipeg, samples of some of the articles can be seen and descriptions of the other articles can be obtained.

Each party or firm tendering must submit the names of two responsible persons, who will consent to act as sureties, and the signatures of the proposed sureties must be appended to a statement at the foot of the tender to the effect that they agree to become surety for the due fulfillment of the contract, if awarded to the maker or makers of the tender.

By order,

L. VANKOUGHNET,  
Deputy Superintendent General  
of Indian Affairs.

Department of the Interior,  
Indian Branch,  
Ottawa, 28th January, 1880.

60 Queen Anne and Photo Cards, illuminated & perfumed in case, 10c. Atlantic Card Co., E Wallingford, Ct.

\$10 to \$1000 Invested in Wall St. Stocks makes fortunes every month. Book sent free explaining everything. Address: BAXTER & CO., Bankers, 7 Wall St., N.Y.

WHISKERS or a luxuriant Moustache can be secured in a few days. Safe and sure. Send address and 50c. to J. SEARS & CO., Wyoming, Ohio, U.S. Stamps taken.

25 FANCY CARDS with Name 10c. Plain or Gold Agents' Outfit 10c. 150 Styles. Hull & Co., Hudson, N.Y.

# LIEBIG COMPANY'S

## EXTRACT OF MEAT

"Is a success and boon for which Nations should feel grateful."—See Medical Press, Lancet, Brit. Med. Jour., &c.  
"Consumption in England increased tenfold in ten years."  
To be had of all Storekeepers, Grocers and Chemists.  
Sole Agents for Canada and the United States (wholesale only) C. David & Co., 43, Mark Lane, London, England.

**FINEST AND CHEAPEST MEAT-FLAVOURING STOCK FOR SOUPS, MADE DISHES & SAUCES.**  
CAUTION.—Genuine ONLY with fac-simile of Baron Liebig's Signature in Blue Ink across Label.

## TRUHS.

## HOP BITTERS,

(A Medicine, not a Drink.)

CONTAINS

HOPS, BUCHU, MANDRAKE, DANDELION,  
AND THE PUREST AND BEST MEDICAL QUALITIES OF ALL OTHER BITTERS.

## THEY CURE

All Diseases of the Stomach, Bowels, Blood, Liver, Kidneys and Urinary Organs, Nervousness, Sleeplessness, Female Complaints and Drunkenness.

\$1000 IN GOLD

Will be paid for a case they will not cure or help, or for anything impure or injurious found in them.

Ask your druggist for Hop Bitters and free books, and try the Bitters before you sleep. Take no other.

The Hop Cough Cure and Pain Reliever is the Cheapest, Surest and Best.

FOR SALE BY ALL DRUGGISTS.

## THE BURLAND LITHOGRAPHIC COMPANY

(LIMITED)

CAPITAL \$200,000,

GENERAL

Engravers, Lithographers, Printers

AND PUBLISHERS,

3, 5, 7, 9 & 11 BLEURY STREET,  
MONTREAL.

THIS ESTABLISHMENT has a capital equal to all the other Lithographic firms in the country, and is the largest and most complete Establishment of the kind in the Dominion of Canada, possessing all the latest improvements in machinery and appliances, comprising:—

- 12 POWER PRESSES.  
2 PATENT ENVELOPE MACHINES, which make, print and emboss envelopes by one operation.  
1 PATENT LABEL GLOSSING MACHINE.  
1 STEAM POWER ELECTRIC MACHINE.  
4 PHOTOGRAPHING MACHINES.  
2 PHOTO-ENGRAVING MACHINES.

Also CUTTING, PERFORATING, NUMBERING, EMBOSSEING, COPPER PLATE PRINTING and all other Machinery required in a first class business.

All kinds of ENGRAVING, LITHOGRAPHING, ELECTROTYPING and TYPE PRINTING executed in the BEST STYLE

AND AT MODERATE PRICES.

PHOTO-ENGRAVING and LITHOGRAPHING from pen and ink drawings A SPECIALITY.

The Company are also Proprietors and Publishers of the CANADIAN ILLUSTRATED NEWS,

L'OPINION PUBLIQUE, and  
SCIENTIFIC CANADIAN.

A large staff of Artists, Engravers, and Skilled Workmen in every Department.

Orders by mail attended to with Punctuality; and prices the same as if given personally.

G. B. BURLAND,

MANAGER.

Free

**D. M. FERRY & CO.**

ILLUSTRATED & DESCRIBED

**SEED ANNUAL**

FOR 1880

Will be mailed free to all applicants, and to customers without ordering it. It contains four colored plates, 600 engravings, about 500 pages, and full descriptions of prices and directions for planting 150 varieties of Vegetable and Flower Seeds, Plants, Trees, etc., valuable to all. Send for it. Address, D. M. FERRY & CO., Detroit, Mich.

## The Scientific Canadian

MECHANICS' MAGAZINE

AND  
PATENT OFFICE RECORD,  
A MONTHLY JOURNAL

Devoted to the advancement and diffusion of  
Practical Science, and the Education of  
Mechanics.

THE ONLY SCIENTIFIC AND MECHANICAL PAPER  
PUBLISHED IN THE DOMINION.

PUBLISHED BY

THE BURLAND LITHOGRAPHIC CO.

OFFICES OF PUBLICATION,

5 and 7 Bleury Street, Montreal.

G. B. BURLAND, General Manager.

F. N. BOXER, ARCHITECT &amp; CIVIL ENGINEER, Editor.

## TERMS:

One copy, one year, including postage.... \$2.00

One copy, six months, including postage... 1.10

Subscriptions to be paid in ADVANCE.

The following are our advertising rates:—For one monthly insertion, 10 cts. per line; for three months, 9 cts. per line; for six months, 8 cts. per line; for one year, 7 cts. per line; one page of illustration including one column description, \$30; half-page of illustration, including half column description, \$20; quarter-page of illustration, including quarter column description, \$10. 10 per cent. off on cash payments.

INVENTIONS AND MACHINERY, &c., or other matter of an original, useful, and instructive character, and suitable for subject matter in the columns of the MAGAZINE, and not as an advertisement, will be illustrated at very reduced rates.

REMITTING MONEY.—All remittances of money should be in the form of postal orders. When these are not available, send money by registered letters, checks or drafts, payable to our order. We can only undertake to become responsible for money when sent in either of the above ways.

This journal is the only Scientific and Mechanical Monthly published in Canada, and its value as an advertising medium for all matters connected with our Manufacturing, Foundries, and Machine Shops, and particularly to Inventors, is therefore apparent.

60 CHROMO, MOTTO, Gilt-Edge & Lily cards, with name, 10c. Globe Print Co., Northford, Ct.

## THE COOK'S FRIEND

BAKING POWDER

Has become a HOUSEHOLD WORD in the land, and is a HOUSEHOLD NECESSITY

in every family where Economy and Health are studied. It is used for raising all kinds of Bread, Rolls, Pancakes, Griddle Cakes, &c., &c., and a small quantity used in Pie Crust, Puddings, or other Pastry, will save half the usual shortening, and make the food more digestible.

## THE COOK'S FRIEND

SAVES TIME.

IT SAVES TEMPER.

IT SAVES MONEY.

For sale by storekeepers throughout the Dominion, and wholesale by the manufacturer.

W. D. McLAREN, UNION MILLS.

17-19-52 362

55 College Street.

## E. N. FRESHMAN &amp; BROS.

Advertising Agents,

186 W. Fourth St., CINCINNATI, O.,

Are authorized to receive advertisements for this paper. Estimates furnished free upon application.

Send two stamps for our Advertisers' Manual.

## TO LET.

In those central premises forming the corner of Bleury and Craig Streets, and in the adjacent house on Craig Street—

OFFICES, double and single.  
FLATS, admirably adapted for light manufacturing business, with or without steam power. Rent moderate.

Apply to

G. B. BURLAND,

No. 7 Bleury Street.

50 Chromo, Snowflake, Oriental, Lily, etc. Cards with name, 10c; 25 Flinstarrow Cards, 10c; 1 Fem and Scroll Autograph Album, 15c; Agents complete outfit, 10c. ROYAL CARD CO., Northford Ct.

40 ELEGANT CARDS, all Chromo, Motto, and Glass, name in gold and jet 10c. West & Co., Westville, Ct. 13-12-34

\$55.66 Agents Profit per Week. Will prove it or forfeit \$500. 84 Outfit free, Montreal Novelty Co., Montreal, P. Q.