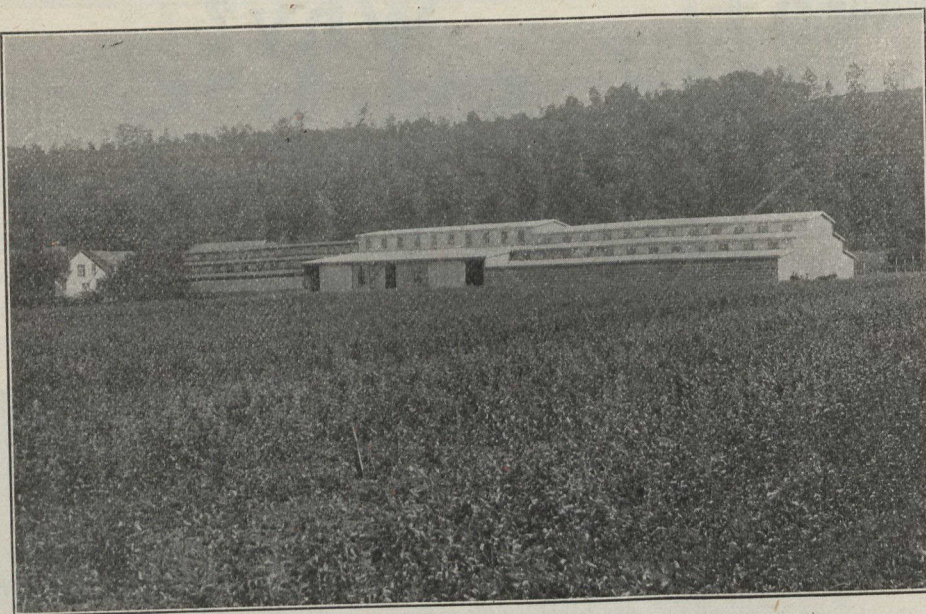


EARLY PLANTING OFTEN SPELLS SUCCESS

THOSE planters who have had to wait weeks in the spring after their ground was fit to plant, realize what it means to get Trees from the Nursery **EARLY**.

The sheds shown in the illustration have a space of 30,000 square feet. No rain, bad weather, or wind to stop packing or injure the stock by exposure.

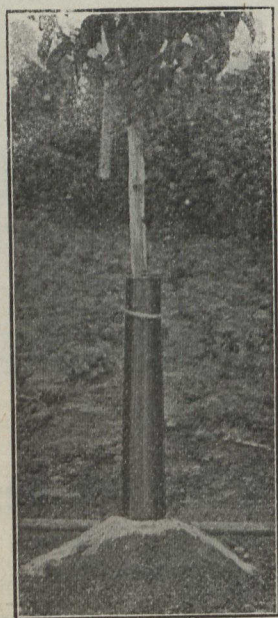
In addition to the sheds shown in the illustration, another shed 100 x 100 is being erected to take care of increased business of the coming season.



Packing Sheds, Helderleigh Nurseries

If you have not placed your order for Trees, consider the advisability of placing it with a firm that can give you the very best stock **EARLY**. This very important feature may mean **success** or **failure** in your planting. I have every facility for packing with care and dispatch and solicit your patronage.

E. D. Smith Helderleigh Nurseries **Winona, Ont.**



Tree Protected by Wooden Veneer and banked up with earth to prevent entrance of pests at bottom.

PROTECT YOUR TREES

Against Rabbits, Mice and
other Vermin

Many young orchards are greatly injured each year by these pests. Wrap the trunks with

WOODEN VENEERS

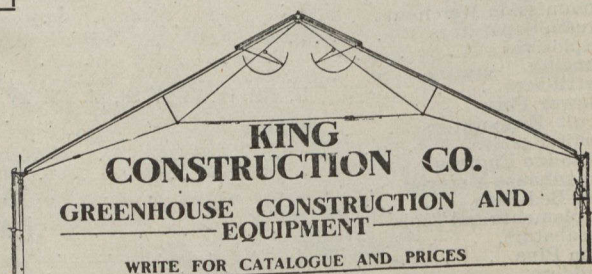
and damage will be prevented. These veneers will protect also against sun-scald.

Send At Once to
The Oakville Basket Co.
OAKVILLE, ONTARIO

KING GREENHOUSES

Are the most
MODERN AND PERMANENT

Greenhouses that can be constructed. Years of actual test and the experience of large and small growers have gained for our houses the reputation of being the most satisfactory ever erected for vegetable or flower growing, or private conservatories.



Plans prepared for complete plants and equipment at a moderate cost: all or part of the necessary materials supplied and houses of any size erected under our personal supervision if desired by builder.

Write and tell us the kind of houses you desire to erect or ask for question blank and we will mail you our descriptive bulletin by return of mail.

THE KING CONSTRUCTION CO.
Cor. Dovercourt Rd. and Sudbury St., TORONTO, ONT.

Mention The Canadian Horticulturist when writing.