

Guide-Advocate

WATFORD, NOVEMBER 14, 1919

Farmers Must Wake Up

During the early stages of the present Victory Loan campaign it seemed that one class of the community which was showing reluctance in subscribing for Victory Bonds was the farming community, but it is hoped that before the subscription sheets close Saturday night, this reproach will have been removed. There were similar indications last year but during the last few days of the drive, farmers' subscriptions came in very rapidly.

Anyone would be loath to believe that the farmers who of all classes of the community are most directly interested in a heavy over-subscription to the present Loan are apathetic. More than one third of proceeds of the last Loan was spent directly in the purchase of Canadian wheat and other foodstuffs, and re-sold to Great Britain and Allied countries on credit. That is to say \$207,750,000 of the money subscribed a year ago went into the pockets of the farmer; and without these heavy purchases the farmer would have been obliged to dispose of his surplus product at a probable loss. The amount that will be spent during the coming year in financing credits to overseas purchasers of Canada's agricultural products is wholly contingent on the extent of the over-subscription to this year's Loan. Therefore if any farmer is desirous of seeing the present overseas market for his products maintained he will help pile up the total of Bond subscriptions. Buy bonds to-day.

Watch the Young Wheat Plants

Every farmer who grows any considerable acreage of wheat should make it his business to keep a careful watch on the wheat plants from the time they break through the ground this fall until they are ready for harvest next summer. He may learn much of value and much to guide him in his treatment of the crop of next year.

We watch carefully the young calf in its different stages of growth and by the story it tells, we are guided in our treatment of the animal. The wheat plant, too, has a story to tell and we only are at fault if we do not heed and profit by the story.

Watch the crop carefully this fall, next winter and next spring and let it answer your questions. Did the young plants start growth rapidly and vigorously? Were they able to get a good root-hold in the ground before frost came? Did they send out sufficient foliage in the fall to protect themselves over winter? Did the winter kill out some of them? Why? And could the number have been reduced? Do they look thrifty when spring comes or are they starved and stunted? How do they react when disease attacks them? And lastly, what is the tale that harvest tells? If it is a good one, you are on the right track. If it is measured by ten or fifteen bushels of poor or mediocre grain, something is wrong. Go back over the story of the crop and chances are that you will find the cause. The crop will tell its story, if you will but stop to look.

LAMBTON WINTER FAIR

The Lambton Winter Fair will be held in Petrolia on February 11th, 12th and 13th, 1920. The Officers and Directors of the three County Organizations forming the Winter Fair, the Corn, Grain and Seed Growers' Association, the Pure Bred Livestock Breeders' Association and the Lambton Poultry Association held a joint meeting in the County Agricultural Office on Saturday last. The matter of a suitable building for the housing of the combined exhibit was thoroughly gone into. The committee in charge were urged to vigorously continue their efforts and to report their work to the Association from time to time.

A much larger entry of corn, grain and seed is expected at the coming exhibit than ever before. Large quantities of corn are being husked this fall and saved for seed. Enquiries for seed corn from various parts of the Province are being received by the Secretary of the Corn Growers' Association.

The Livestock Association is preparing for the taking care of Two Days' Sales. One day registered Dairy cattle and Swine and the second day registered Sires and Dams of the Fat Stock breed. The quality of cattle being offered for sale is improving rapidly. Some of the best bred cattle in the county are being contributed to the Sale. Prospective contributors are requested to have their cattle registered at once and forward pedigrees and deposits to the Secretary, Agricultural Office, Petrolia, no later than January 3rd.

A Credit to Canada

Canada has every reason to be proud of that great family and farm paper The Family Herald and Weekly Star of Montreal. It is now issued in a new form, sixty-four pages weekly, and is more easily handled and read. The Family Herald is the great home paper of this continent. Each and every issue is brimful of the choicest and most interesting and instructive reading matter. It costs but \$1.25 a year and every subscriber for 1920 is receiving a handsome souvenir portrait of the Prince of Wales, size 10 x 22 inches. This portrait alone could not be bought for the money. How the Family Herald can give such a beautiful souvenir to all subscribers is indeed a mystery, still they do it and their subscribers receive the benefit of their generosity.

Sale Register

Tuesday, Nov. 18, 50 acre farm of John A. McKenzie, near Alvinston.

Monday, Nov. 24, farm stock of Wm. T. Hawken, Warwick. See ad.

Saturday, Nov. 15, household furniture of Mrs. Clarissa Barnes, Watford. See ad.

Tuesday, Nov. 18, farm stock of John Lowry, Warwick. See ad.

WHALE STEAK CROQUETTES

One cup of boiled rice, 1 cup of finely chopped Whale Steak, 1 teaspoonful of salt, a little pepper, 2 tablespoons of butter, 1/2 cupful of milk, 1 egg. Put milk on to boil and add the meat, rice and seasoning. When this boils add the egg well beaten. Stir one minute. After cooling, shape, dip in egg and crumbs and fry.

Wedding Stationery of the finest quality at The Guide-Advocate.

PLUMBING and TINSMITHING

The undersigned having purchased the Plumbing and Tinsmithing business of T. Dodds & Son, is prepared to attend to the wants of the public in any branch of his line.

A full line of Plumbing and Heating Goods will be kept on hand at all times.

Agent for the SUNSHINE, RADIUM and HECLA Furnaces. Blevetroughing and repairing of all kinds promptly attended to.

The patronage of the public respectfully solicited.

EDWARD MACKNESS

The Old Stand—T. Dodds & Son's.

GIRLS WANTED

at The Andrews Wire Works.

Good wages, short hours, light and pleasant work and cheerful surroundings, light and sanitary workshop.

Apply to

W. L. MILLAR
Superintendent.

Ladies' Coat Week at Swift's

Special Showing at \$25.00 to \$40.00



Good styles in 16 and 18 years. Prices

\$16.50 to \$30.00

Lovely Grey Coats

Ladies' sizes, 36 to 42

\$25.00 to \$35.00

Full range of

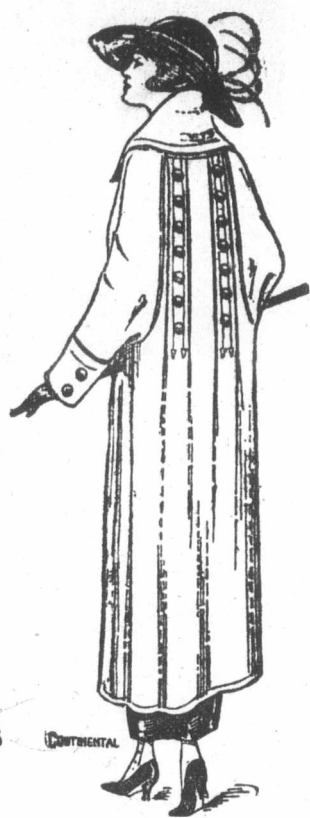
Children's Coats

\$6.50 to \$15.00

Smart new effects in

Salts' Plush Coats

Sizes 38 to 44.



MEN'S OVERCOAT WEEK AT SWIFT'S

Good showing of new models, waist line effect, single and double-breasted; also a full range of young men's and boys' coats.

Swift, Sons & Co.

WANT COLUMN.

Five lines and under, 25c.
Six words average one line.
Card of Thanks 50c.

LOST—Between Watford and London Road, Plympton, a mink marmot muff. Finder please leave at Guide-Advocate Office.

FOUND—About a week ago an umbrella. Owner can have same by proving property and paying for this ad.—F. J. HUGHES, Simcoe St.

WORN OUT HORSES and fallen animals of any kind bought.—LETT BROS., fur ranchers, lot 18, con. 13, Brooke; Rural phone 4821. Watford P. O. Phone messages at our expense.

Sittings are now in order in anticipation of Christmas. We will be pleased to make an appointment for you at an early date.

ROBSON, Photographer, Petrolia.

FOR SALE—A good dwelling house on Main street in Watford also a fine stable in rear of said dwelling. Several other dwelling house properties in Watford for sale and a stable to rent. Apply to W. E. FITZGERALD, Watford, Ont.

FOR SALE—Comfortable dwelling house on Front st., Watford. House part brick and part new frame, large lot, excellent garden soil, fruit trees, new well and cistern, all enclosed with wire fence. Will sell coal and wood in shed. Poor health reason for selling.—MRS. CAROLINE KELLY, Watford.

The Watford Referendum Committee take this opportunity of expressing their high appreciation and thanks for the generous help (financial and otherwise) rendered by the many friends of the prohibition cause in assisting to bring about the glorious victory achieved on Monday, Oct. 20, 1919.—D. WATT, Sec.

D. WATT

ISSUER OF MARRIAGE LICENSES

and FIRE INSURANCE.

Apply at Residence, Erie St., or the Post Office Watford.

FARM FOR SALE

150 Acres, being the south-east 1/4 of Lot 16, Con. 2, S.E.R., Township of Warwick. Well fenced, clean, frame barn, steel windmill, rock well and cement stock tank on the place. Has been pastured for years. Apply to W. B. LAWS, Administrator, Box 154, Watford P.O. Residence, Simcoe street, Watford. 31-1m

Announcement!

A Foot Comfort Expert

from Toronto

will be in attendance

at this store

Tuesday, November 25

to demonstrate

Dr. Scholl's Specialties

for the Relief and Correction
of all Foot Ailments.

ENTIRELY FREE

MAKE AN APPOINTMENT NOW

P. Dodds & Son