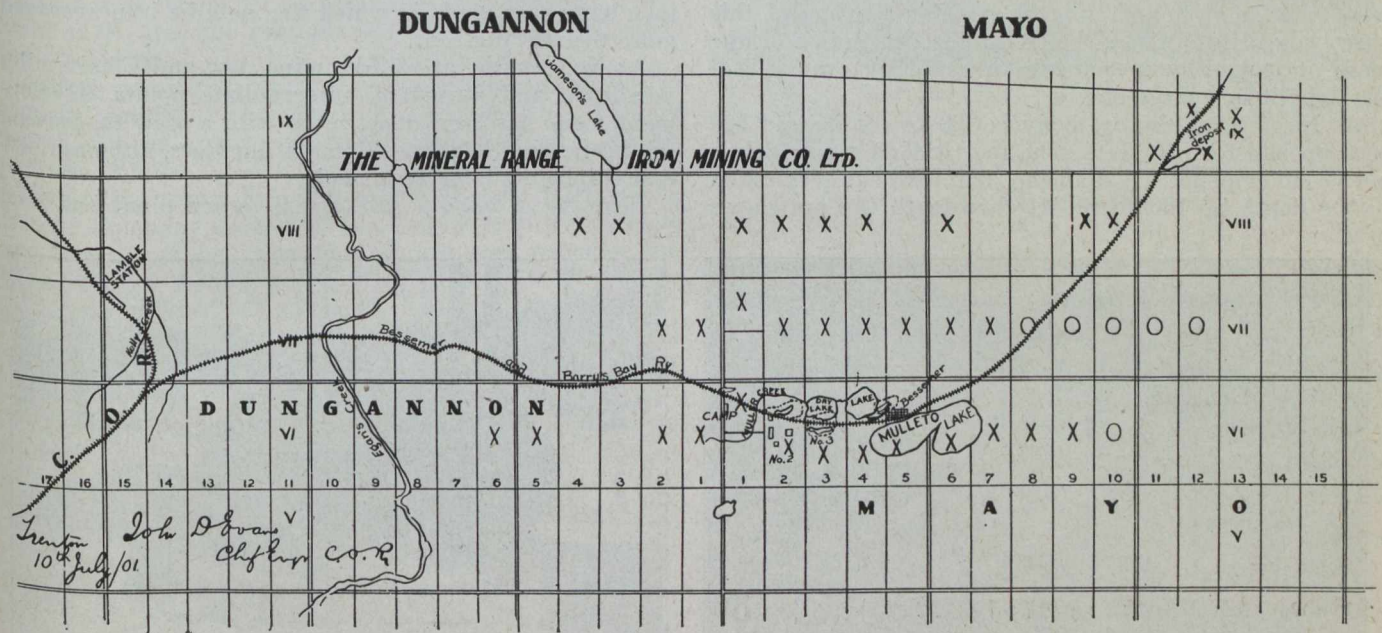


# The Magnetite Mines of the Mineral Range Iron Mining Company, Limited, at Bessemer, Hastings County, Ontario.

The pluck and clean fighting qualities of one man have been the chief factors in the exploitation and development of what is undoubtedly one of the most promising magnetite deposits in Canada.

Near L'Amable Station on the Central Ontario Railway, the spur line of the Mineral Range Iron Mining Company's provides means of transportation for the ore from the Bessemer mines. To Mr. H. C. Farnum, who is the discoverer of the deposits, the organizer of the company and the general manager of the mines and rail-

not a trace of titanium. A very pure magnetite compact massive and displaying a string vitreous lustre is also found, principally at No. 2 mine. With the ore is associated a fluctuating percentage of calcite. Iron pyrites also occurs, but in such a manner as not to affect the value of the ore. This is explained by the fact that this objectionable mineral is not disseminated through the ore, but is found as the filling matter of small stringers, in distinct and easily separable masses along the contact of the ore and the wall rocks, and sometimes on the con-



MAP OF PROPERTY OF M.R.I.M. CO., LTD.—LOTS MARKED X AND O.

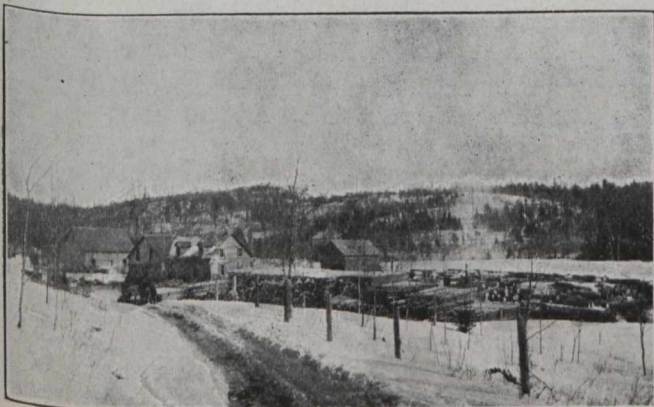
way, belongs the credit of beginning the enterprise and of steering it through many shoals.

The mines are situated about five miles northeast of L'Amable Station. The company controls 700 acres of developed mineral claims from which ore has been shipped and sold, and 3,000 acres of undeveloped claims.

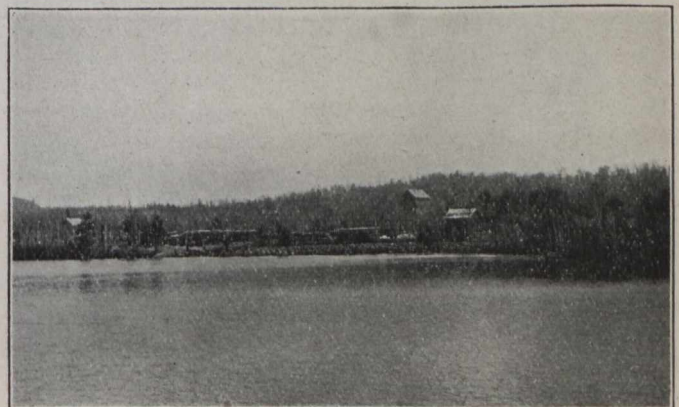
The ore bodies lie mainly in diorite, although at No. 2 mine there is an intrusion of granite. The ore itself is a high grade granular magnetite, containing phosphorus well below the bessemer limit, very little sulphur and

tact faces of the ore and included masses of rock. In mining, crushing and loading the ore sufficient culling is done to bring the sulphur down to a negligible amount.

The ore bodies have a dip of 60 degrees south and a general northeast and southwest strike. The extent of these bodies it is impossible to estimate accurately. More than 6,000,000 tons of ore is in sight. But there is strong evidence that the range is continuous over the two and one-half miles intervening between Nos. 3 and 4 mines and Child's mine to the northeast. It is neither safe nor



Office and Shop at Bessemer.



View from Lake.