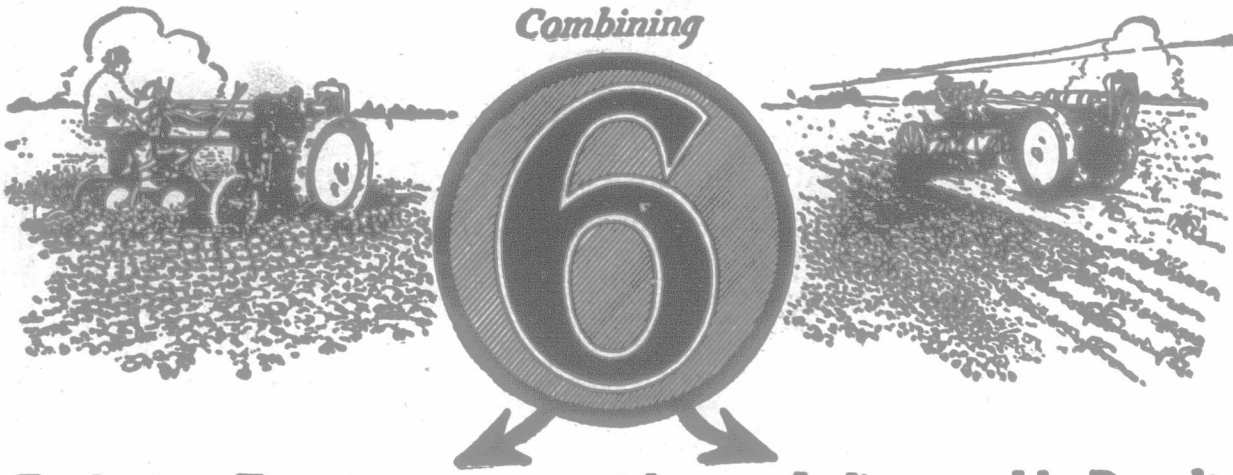


The MOLINE

Tractor is Universal

It is the Only Farm Power Plant
Combining



Exclusive Features

with

Indispensable Results

- | | |
|---|--|
| 1. Does <i>all</i> field work, including cultivating, harvesting and belt work. | 1. No duplication of any work by horses. |
| 2. Both tractor and implement operated by <i>one</i> man. | 2. A saving in wages. |
| 3. Tractor and implement form <i>one</i> unit. | 3. Entire outfit turns short, backs and makes fence corners produce. |
| 4. Operator sits on implement at centre of all controls of tractor and implement. | 4. Ease of operation. |
| 5. Operator sees his work. "Fore-sight is better than hindsight." | 5. Better work. |
| 6. Tractive power in front of work; operator behind it. | 6. Power used as horses are used. |

The Power of a Correct Principle

The principle of doing all field operations with one man sitting where he can watch his work is correct, or farming has always been done backward, and the operator should always have ridden or led his horses instead of driving them.

The Moline Universal Tractor places the power of nine big horses where the horses stood; is driven just like horses are driven—from the seat of the implement; and is hitched up to the implement just like horses are hitched.

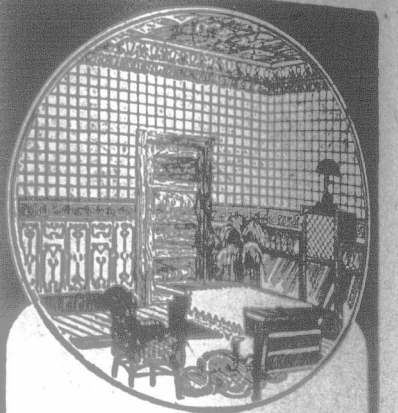
Note—if desired, you can use the "drag behind" or horse-drawn implements you now have the same as with other types of tractors.

See your Moline Dealer or write us for full information.

Tractor Division

Willys-Overland Limited
Toronto, Canada

MOLINE PLOW CO., MOLINE, ILL.

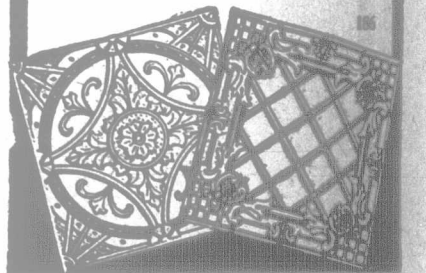


"Metallic" Ceilings permanent, beautiful!

No more wall paper worries, no troubles with falling plaster. Just put up Metallic Ceiling and Wall Plates and you have a permanent, sanitary, fire-proof covering, very beautiful and washable with soap and water. Can be erected in a day over old plaster and will never crack or fall off. Many handsome designs to suit any room or building. Send for Booklet "C" today.

Garages, Steel Shingles, Corrugated Iron, etc., circulars on request.

The METALLIC ROOFING Co.
Manufacturers Limited
King and Dufferin Sts. - TORONTO



Tudhope-Anderson

WIDE TIRE Steel Wheels make your work easier

How much easier to load and haul around the farm with a low wagon that won't sink in the soft soil and spoil the ground or tire out the horses! There's a Tudhope-Anderson Wide Tire Steel Wheel for your truck-wagon.

Write us now for order-blanks and full particulars about wide tire Steel Wheels for work about the farm. Can be made to fit any skid or axle bearing—diameters, 20" to 60"; tire widths, 3" to 10".



We also manufacture Low Down Wide Tire Steel Wheel Trucks.

Tudhope-Anderson Co., Limited
Orillia, Ontario
Cut out this advertisement and mail to us 45

BOOST YOUR TOWN By Organizing a Band.

We will gladly supply you free of charge with full information as to the formation of a good band. Complete Organizing Suggestions for Bands.

THE WILLIAMS & SONS CO. LTD.
R.S. 468 KING ST. WEST, TORONTO

PATENTS Canadian, Foreign.
Booklets Free.
EGERTON R. CASE, M.C.I.P.A. (Lond.)
10 Adelaide East TORONTO