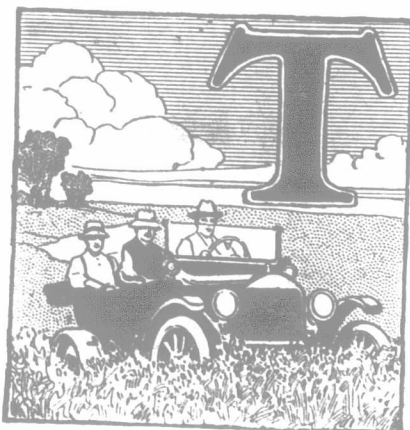


A Car of Proven Quality



THE Ford car has been on the market twelve years, surely long enough to have proven its high quality. There is nothing experimental about it. Every part has stood the test of time and proven its stability with hard service. No other car has ever approached the durability records of the Ford.

No matter what price you pay for a car you cannot get one with a stancher chassis. Government Laboratory tests have shown that the different parts of the Ford car are superior to those in any other car. Ford Vanadium steel has never been equaled in strength.

If you want a car that can plow through deep mud, sand and gravel—that can cross fields, corduroy roads and ford streams—that can climb the steepest hills with ease—that will give the greatest mileage all year round with the least expense and care—then there is only ONE car for you—The Ford.

Ford

Touring - - \$495

Runabout - \$475

F.O.B. FORD, ONT.

Ford Motor Company of Canada, Limited
FORD - - - ONTARIO

32

Every planting season you stake land, fertilizer, time, work, and the cost of the seed on the good faith of your Seedsmen.

Every season for Forty-five years

EWING'S SEEDS

have justified this good faith.

They are clean and fresh—they show a very high percentage of germination—and are true to name and type. They include all the best of the new varieties, as well as the old favorites.

Write early for our new Illustrated Catalogue, and if your dealer hasn't Ewing's Seeds, order from us direct.

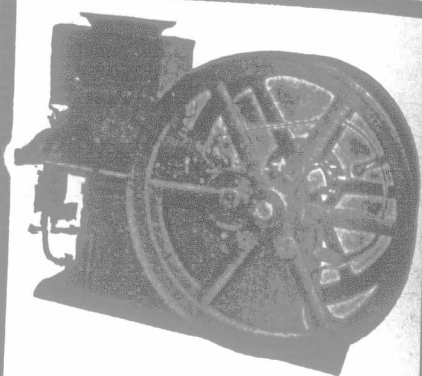
The William Ewing Co., Limited
Seed Merchants, McGill St., Montreal.



Ewing's "Improved Hanson" Lettuce

A "crisp heading" variety that is very hardy and will stand extremes of weather. Head is large, hard, tender and crisp, with blanched centre; nearly free from bitterness, and remains long in excellent condition.

1/4 lb. 60c; oz. 20c; pkt. 5c.
Sent postage paid—cash with order.



This Willing Worker Solves the Help Problem

Let this hard-working engine do your pumping, sawing, grinding, fanning, cutting, cream separating, etc.

You can "multiply yourself" by turning over the bulk of your hard work to a

MONARCH FARM ENGINE

Made by specialists. Can be run at different speeds for different purposes. Simple in build—you will have no trouble in understanding it; no fuss or bother running it.

The "MONARCH" is a perfect, willing worker in winter or summer; saving with fuel; strong in every part; easy to move; starts at a touch; will give you longer, better service than any engine on the market. Hundreds of testimonials from pleased buyers. Sold cash or on terms. Write for free illustrated folder.

Canadian Engines, Limited,
Dunnville, Ontario

Correct Your Soil With BEACHVILLE WHITE LIME

IF YOUR SOIL is not as fully productive as it should be, it may be over-acid, and an application of Beachville White Lime will produce wonderfully beneficial results in your crops.

Our Lime-stone is the highest grade in Canada. Write for free folder containing information you should have.

Beachville White Lime Co., Limited
Beachville, Ontario

BOB LONG UNION MADE GLOVES AND OVERALLS

ASK YOUR DEALER



Known from Coast to Coast
R.G. LONG & CO. LIMITED
TORONTO ONTARIO

a