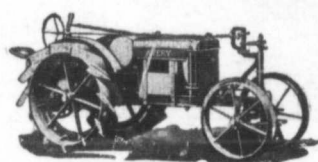


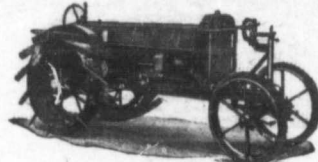


## "Just See the

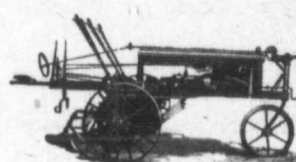
The Avery Line includes the popular six sizes of tractors, 8-16, 12-25, 14-28, 18-36, 25-50 and 40-80 H. P., and the following machines:



Avery Special Model "B"  
5-10 H. P. Tractor



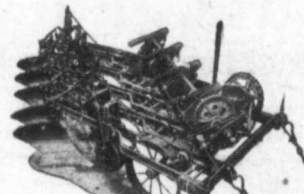
Avery 6-cylinder Lightweight  
Tractor, Model "C"



Avery Motor Cultivator—two sizes—4-cylinder One-Row and 6-cylinder Two-Row



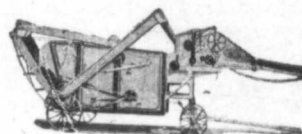
"Power-Lift" Rigid Beam Light Tractor  
Plow—2, 3, 4 and 5 Bottoms



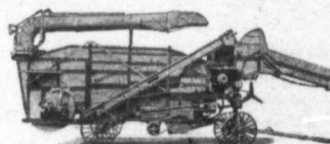
"Self-Lift" Independent Beam—  
3, 4, 5, 6 and 8 Bottoms



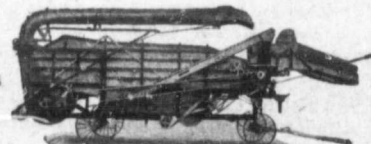
"Power-Lift" Disc Plow—  
2, 3, 4, 5, 6 and 8 Discs



Avery Lightweight Individual  
Thresher, 22 x 32 in.  
Roller Bearing Equipped

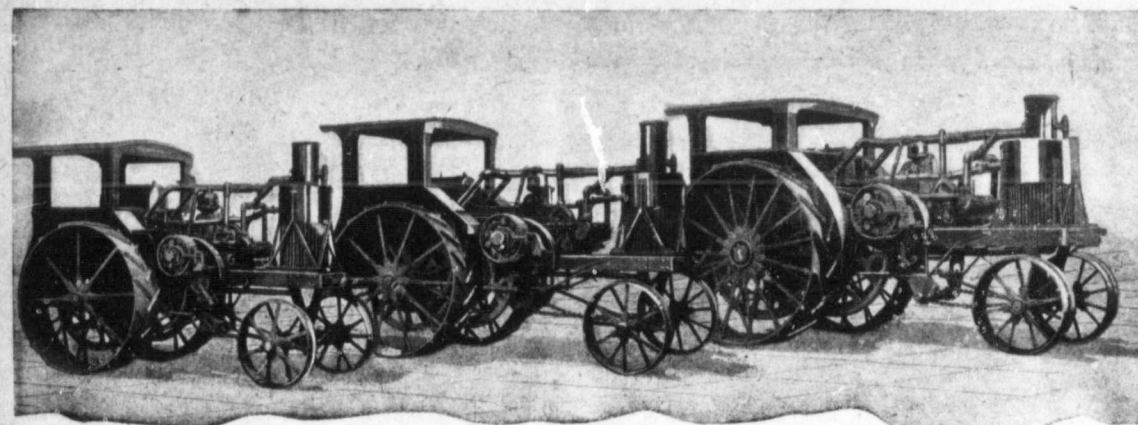


Avery "Yellow-Kid" Thresher, for Individual and Small Runs, 20 x 30 and 24 x 36 in.  
Roller Bearing Equipped



Avery "Yellow-Fellow" Thresher, for Farmer-Company and Custom Work. 28 x 46, 32 x 54 and 36 x 60 in. Roller Bearing Equipped

In addition the Avery Line includes: Power Operated and "Self-Adjusting" Tractor Disc Harrows; "Power-Lift" Tractor Grain Drills; Tractor Hitches for Two and Three Disc Harrows and Drills; Single and Double Row "Self-Lift" Listers; Silo Fillers; Tanks for Fuel, Water and Combination; Portable and Skid Motors.



18-36 H. P.  
Avery Tractor

25-50 H. P.  
Avery Tractor

40-80 H. P.  
Avery Tractor

## Avery Line for 1920

*THE Avery Line includes not only tractors for any size farm and every kind of work, but also a complete line of tractor drawn tools and tractor belt-driven machinery.*

You can easily fill your tractor requirements with one of the six Avery Tractors in 8-16, 12-25, 14-28, 18-36, 25-50 or 40-80 H. P. size, all built alike, with the same standardized design, including the famous "Draft-Horse" Motor and "Direct-Drive" Transmission.

Or if you desire a small tractor which can be used on small farms or for doing the lighter work on large farms, you have your choice of either the 4-cylinder 5-10 H. P. Model "B" Avery, or the 6-cylinder lightweight Model "C" Avery Tractor.

We also have Light and Heavy "Self-Lift" Independent Beam Moldboard Plows, and Disc Plows in sizes to fit every size Avery Tractor;

Power Operated, "Self-Adjusting" Tractor Disc Harrows and Tractor Grain Drills;

Tractor Disc Harrow and Drill Hitches;

Single and Double Row "Self-Lift" Listers;

Four-Cylinder One Row and Six-Cylinder Two Row Motor Cultivators;

Roller Bearing Threshers in all sizes, for individual, farmer-company and custom work;

Silo Fillers;

Tanks for Fuel, Water and Combination;

Portable and Skid Motors, etc.

*All are one-man outfits;*

*All tools operated from the tractor platform;*

*All tools "Power-Lift" and "Self-Adjusting";*

*All tractors coupled instantly at the drawbar, or belted instantly to any machine—belt pulley always in place.*

### "It Pays to Averyize"

Averyize *all* your farm work and by so doing raise bigger crops at less expense. The complete Avery Line answers all your power farming requirements. In the Avery Line there is a size Avery Tractor to exactly fill *your needs, your size farm and your pocketbook.*

Then if you desire tractor drawn machinery such as tractor disc harrows and grain drills, plows of all kinds, etc., you can get them in the Avery Line, specially built for use with a tractor and operated from the tractor platform, so that they are all *one-man outfits.*

Or if you desire tractor belt-driven machinery we have a silo filler and complete line of Champion "Grain-Saver" Threshers. A special little lightweight Thresher for individual use; two sizes of "Yellow-Kid" Threshers for individual, farmer-company and small runs; and three sizes of "Yellow-Fellow" Threshers for large runs and custom work. *All are Hyatt Roller Bearing equipped.*

No matter what your power requirements are, you can answer them with Avery machines. When you get an Avery you get a machine that is backed by an organization with satisfied customers in every state in the Union and 63 foreign countries. Also you are assured prompt and permanent service.

### Write for the Avery Catalog

and interesting Tractor "Hitch Book." Contains many valuable suggestions for the satisfactory operation of tractors, tractor drawn machinery and tractor driven machinery. Two books mailed free.

CANADIAN AVERY CO., LIMITED

Western Canadian Distributors  
Branches at Regina, Calgary, Saskatoon

MAIN OFFICE, WINNIPEG  
Sub-Branches at Lethbridge and Camrose

# AVERY

Motor Farming, Threshing  
and Road Building Machinery