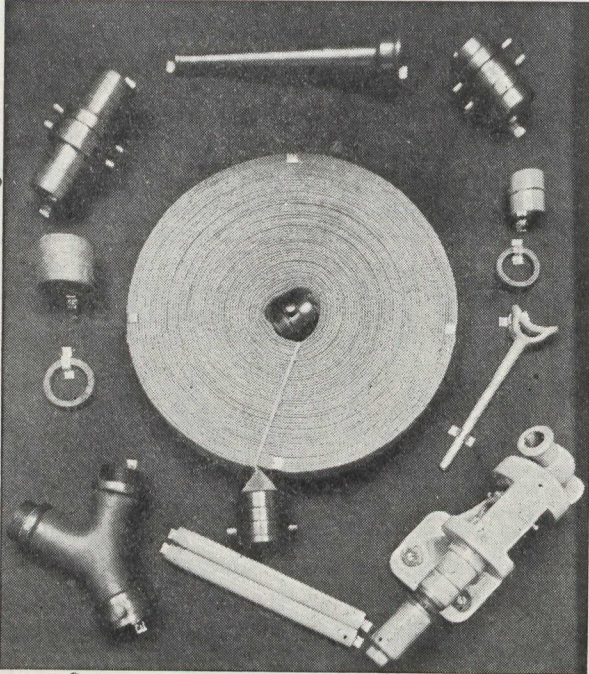


WE CAN SUPPLY YOUR NEEDS FOR
FIGHTING FOREST FIRES



PICTURED ABOVE ARE SOME OF OUR PRODUCTS

*We have supplied several Forest Protective Associations and
can furnish equipment on short notice*

Fire Hose, Fire Extinguishers Fire Department
Supplies, General Rubber Goods

THE CANADIAN FIRE HOSE COMPANY, LTD.

30 St. François Xavier St., Montreal

*Note the difference
between a Cambridge
Thermometer and an
ordinary glass
Thermometer*

CLEAR READING
SCALES

SCALES INDIVIDUALLY
CALIBRATED

LENS FRONTED TUBE
GAS FILLED

NICKEL FRONTED CASE

THERMOMETER CAN
BE TURNED & FIXED
IN ANY POSITION

DETACHABLE SEPARABLE
SOCKET
CONTAINING MERCURY

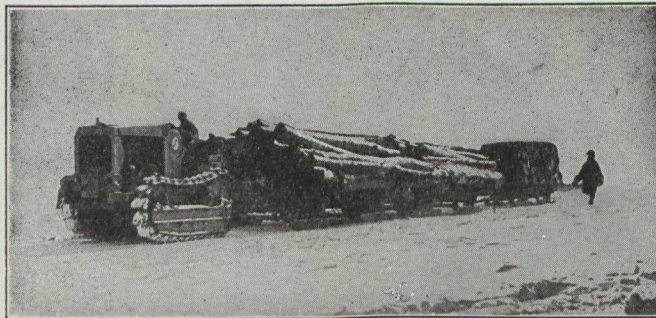
Our Illustrated List
No. 114 will be sent
on request.

**THE CAMBRIDGE AND PAUL
INSTRUMENT CO. LTD.,**
45, GROSVENOR PLACE, LONDON, S.W.1
WORKS: LONDON & CAMBRIDGE.

**CANADIAN OFFICE
INSTRUMENTS LIMITED**
43 and 45 Bank St., Ottawa

The Tractor for Logging, Lumbering and Hauling

The **J^T** is dimensioned
for its ability to go ahead
where there is no road—
under trees and between
them—its traction is
sure in the underbrush,
on solid, swampy, or
sandy ground—its con-
trol is sensitive and posi-
tive.



J^T Tractor Hauling Load of 24 Tons at 20° Below Zero

Write for catalogue and full particulars

It can be handled to the
fraction of an inch in
narrow passages. It will
snake logs when teams
are out of the question.
The **J^T** will turn in a
radius of 6 ft., its width
over all is 60 inches, and
it has a caterpillar trac-
tion of 1,628 sq. inches.

The General Supply Company of Canada Limited

OTTAWA, ONTARIO.

Montreal, Toronto, Winnipeg, Vancouver, North Bay, Moncton.