



**TEN POUNDS  
IN  
TWO WEEKS  
THINK OF IT!**

As a Flesh Producer there can be no question but that

# SCOTT'S EMULSION

Of Pure Cod Liver Oil and Hypophosphites Of Lime and Soda is without a rival. Many have gained a pound a day by the use of it. It cures

## CONSUMPTION,

SCROFULA, BRONCHITIS, COUGHS AND COLDS, AND ALL FORMS OF WASTING DISEASES. **AS PALATABLE AS MILK.**

Genuine made by Scott & Bowne, Belleville, Salmon Wrapper; at all Druggists, 50c. and \$1.00.

## COAL AND WOOD.



## CONGER COAL COMPANY.

Main Office—6 King Street East.

TRUNKS, TRAVELLING BAGS, Etc.  
Best Goods. Lowest Prices.

## O. C. POMEROY,

The White Store, 49 King Street West.



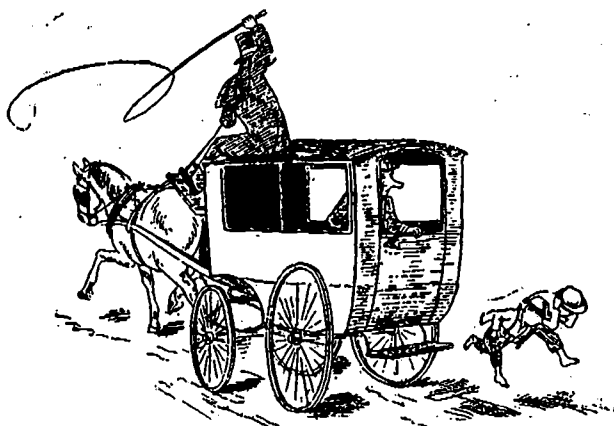
# THE GREAT Remedy

A Sure Cure for all Throat or Lung Troubles; Kidney, Liver and Stomach Affections; and never failing in all forms of Skin Diseases. Address

**Wm. Radam Microbe Killer Co.**  
(LIMITED),

120 King St. West, Toronto, Ont.

Beware of Impostors. See Trade Mark.



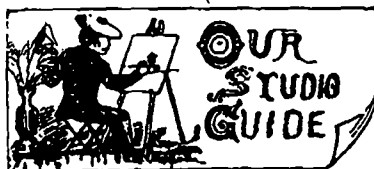
CUT BEHIND—I.

See page 303

**DR. A. F. WEBSTER, Dental Surgeon. Gold Medalist in Practical Dentistry R.C.D.S.**  
Office: N. E. Cor. Yonge and Bloor,  
Over Lander's Drug Store. TORONTO.

**W. H. FERGUSON, Carpenter,**  
81 Bay St., corner Melinda, Toronto,  
Jobbing of all kinds promptly attended to. Printers and Engravers' Jobbing a Specialty.

**SUPERFLUOUS HAIR** Wine Marks (Naevi)—Moles and all facial blemishes, permanently removed by Electrolysis. **DR. FOSTER, Electrician,** Yonge Street Market.



**J. W. L. FORSTER.**  
Pupil of Mons. Bogueureau.  
Portraits a Specialty.

Studio—81 King Street East, Toronto.

**MR. HAMILTON MACCARTHY, R.C.A., SCULPTOR,** formerly of London, England, Under Royal European Patronage. Portrait-Busts, Statuettes and Monuments. Bronze, Marble, Terra Cotta Studio, New Buildings, Lombard St., Toronto.

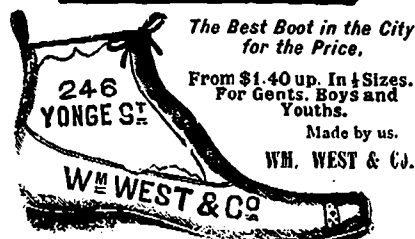
**MR. THOMAS MOWBRAY, ARCHITECTURAL SCULPTOR**  
In Stone and Wood.  
38 YONGE ST. ARCADE.

**J. L. JONES**  
Mechanical & General  
**WOOD ENGRAVING**  
10 KING ST. EAST, TORONTO



Registered Trade Mark.

## NOTE THE STYLE.



"FITS LIKE A GLOVE."  
**THOMSON'S**  
GLOVE-FITTING



# CORSET



The Perfection of Shape, Finish, & Durability. Approved by the whole polite world. Over Six Millions already Sold.

To be had of all Dealers throughout the World.  
**W. S. THOMSON & CO. LTD. LONDON, MANUFACTURERS.**  
See that every Corset is marked "Thomson's Glove-Fitting," and bears our Trade Mark, the Crown. No others are genuine.