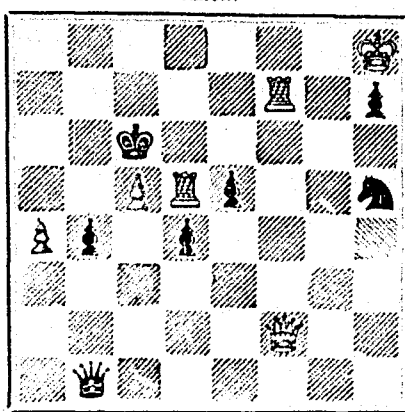


PROBLEM No. 232.  
By Dr. Gold.  
BLACK.



WHITE  
White to play and mate in three moves.

GAME 371ST.

(From the Chessplayer's Chronicle.)

Played, some time ago, between Messrs. Minchin and Wayte, at the St. George's Chess Club.

(Ray Lopez.)

- WHITE.—(Mr. Minchin.) BLACK.—(Mr. Wayte.)
1. P to K 4
  2. Kt to K B 3
  3. B to Kt 5
  4. B to R 4
  5. P to Q 3
  6. P to B 3
  7. P to K R 3
  8. Q to K 2 (a)
  9. B to B 2
  10. P to K Kt 4 (a)
  11. Q Kt to Q 2
  12. Kt to B sq
  13. P takes P
  14. Kt to Kt 3 (a)
  15. P takes P
  16. B to Q 3
  17. B to K 3
  18. Castles K R
  19. B to Q Kt 5 (a)
  20. Q takes R
  21. Q takes K P
  22. Kt to Kt 2
  23. K to R sq
  24. P to Q B 4
  25. Q takes Q
  26. P to B 5
  27. P to R 3
  28. P to B 3
  29. Kt to B 5
  30. Kt P takes Kt
  31. B takes B
  32. K R to Q B sq
  33. R takes R
  34. R to B 4
  35. P to Q R 4
  36. P to R 5
  37. P to R 6
  38. P to R 7
  39. R takes P (a)
  40. R to B 2
  41. R to K Kt 2
  42. R takes B
  43. P takes P
  44. R takes P
  45. R to R 4
  46. K to Kt 2
  47. R to R 7
  48. R takes Kt (ch)
  49. K to B 3
  50. K to K 3
  51. K to Q 3 (a)

NOTES.

- (a) These manoeuvres are all upon the model of the first game in the match between Steinitz and Blackburne.
- (b) To deter White from castling on the Queen's side and hoping to get up an attack if he Castle K R after advancing the K Kt P.
- (c) An oversight of course, but White gets some compensation through his passed Q R P.
- (d) An act of greediness, which deservedly lost the game. The passed P cannot now be stopped, and must cost a piece.
- (e) White hesitated between this move and R to Kt 4. The latter at once wins the B for the advanced Pawn, but he feared, perhaps unnecessarily, Black's Q B P.
- (f) Kt to B sq saves the piece for the moment; but by R to B 7 (better than R takes R P) he would still lose two Pawns, with a forlorn game.
- (g) Black delays resigning till he sees which way the King is going. Had White played to defend the R P, the game would have been drawn, but he now declares his intention of advancing to K 6, which is quite enough.

SOLUTIONS

Solution of Problem No. 30

- WHITE. BLACK.
1. Kt to Q B 4
  2. Kt or R mates acc.

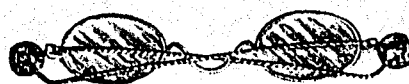
Solution of Problem for Young Players No. 228.

- WHITE. BLACK.
1. Kt to Q B 4 (ch by dis.)
  2. P to K 2
- becomes a Kt and mates.

PROBLEMS FOR YOUNG PLAYERS, No. 229.

- WHITE. BLACK.
- K at Q Kt 6
  - Q at K Kt 3
  - B at Q 7
  - B at Q Kt 4
  - Kt at K B 5
  - Pawns at K Kt 2, and Q B 2

White to play and mate in two moves.



10,000

Articles of Scientific Interest in Gifts, Presents, &c. Send for catalogue. HEARN & HARRISON, Opticians, Montreal.



Tenders for Steel Rails.

TENDERS addressed to the Honourable the Minister of Railways and Canals will be received at the Canadian Emigration Office, 31 Queen Victoria Street, E. C., London, England, until JULY 15th, next, for Steel Rails and Fastenings, to be delivered at MONTREAL, as follows:

- 5,000 tons by October 1st, 1879.
- 5,000 tons by June 1st, 1880.
- 5,000 tons by October 1st, 1880.

Specifications, Conditions, Forms of Tender, and all other information will be furnished on application at this office, or at the Canadian Emigration Office, 31 Queen Victoria Street, E. C., London, England.

By order,

F. BRAUN, Secretary.

Department of Railways and Canals, Ottawa, 13th June, 1879.

52 Perfumed Ocean Gems and Gift Edge Assorted Cards, name in gold, 10c. ELLA RAY, W. Haven, Conn.



Pacific Railway Tenders.

TENDERS for the construction of about one hundred miles of Railway, West of Red River, in the Province of Manitoba, will be received by the undersigned until noon on Friday, 1st August next.

The Railway will commence at Winnipeg, and run north-westerly to connect with the main line in the neighbourhood of the 4th base line, and thence westerly between Prairie Portage and Lake Manitoba.

Tenders must be on the printed form, which, with all other information, may be had at the Pacific Railway Engineer's Offices, in Ottawa and Winnipeg.

F. BRAUN,  
Secretary.

Department of Railways and Canals, Ottawa, 16th June, 1879.

\$10 to \$1000 invested in Wall St. Stocks makes fortunes every month. Book sent free explaining everything.

Address BAXTER & CO., Bankers, 17 Wall St., N. Y.

50 Perfume, Snowflake, Chrono, Motto Cards, name in gold & let. 10c. G. A. SPRING, E. Wallingford, Ct.

The Scientific Canadian

MECHANICS' MAGAZINE,

AND

PATENT OFFICE RECORD,

A MONTHLY JOURNAL

Devoted to the advancement and diffusion of Practical Science, and the Education of Mechanics.

THE ONLY SCIENTIFIC AND MECHANICAL PAPER PUBLISHED IN THE DOMINION.

PUBLISHED BY

THE BURLAND-DESBARATS LITH. CO.

OFFICES OF PUBLICATION:

5 and 7 Bleury Street, Montreal.

G. B. BURLAND, General Manager.

F. N. BOXER, ARCHITECT & CIVIL ENGINEER, Editor.

TERMS:

- One copy, one year, including postage, \$2.00
- One copy, six months, including postage, 1.10

Subscriptions to be paid in ADVANCE.

The following are our advertising rates:—For one monthly insertion, 10 cts. per line; for three months, 9 cts. per line; for six months, 8 cts. per line; for one year, 7 cts. per line; one page of Illustration, including one column description, \$30; half-page of Illustration, including half-column description, \$20; quarter-page of Illustration, including quarter-column description, \$10.

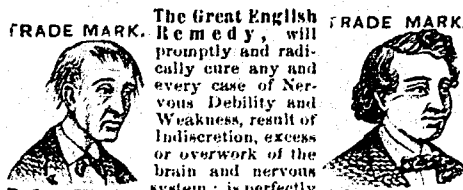
10 per cent. off on cash payments.

INVENTIONS AND MACHINERY, &c., or other matter of an original, useful, and instructive character, and suitable for subject matter in the columns of the MAGAZINE, and not as an advertisement, will be illustrated at very reduced rates.

REMITTING MONEY.—All remittances of money should be in the form of postal orders. When these are not available, send money by registered letters, checks or drafts, payable to our order. We can only undertake to become responsible for money when sent in either of the above ways.

This journal is the only Scientific and Mechanical Monthly published in Canada, and its value as an advertising medium for all matters connected with our Manufactories, Foundries, and Machine Shops, and particularly to Inventors, is therefore apparent.

GRAY'S SPECIFIC MEDICINE.

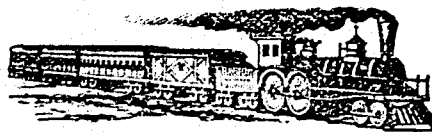


TRADE MARK. The Great English Remedy, will promptly and radically cure any and every case of Nervous Debility and Weakness, result of Indiscretion, excess or overwork of the brain and nervous system; is perfectly harmless, acts like magic, and has been extensively used for over thirty years with great success.

Full particulars in our pamphlet, which we desire to send free by mail to every one. The Specific Medicine is sold by all druggists at \$1 per package, or six packages for \$5, or will be sent free on receipt of the money by addressing

THE GRAY MEDICINE CO.,  
TORONTO, ONT.

Sold in Montreal by all Wholesale and Retail Druggists, and everywhere in Canada and United States. N.B.—The demands of our business have necessitated our removing to TORONTO, to which place please address all future communications.



GOVERNMENT RAILWAY.

Western Division.

SHORTEST AND MOST DIRECT ROUTE TO OTTAWA.

On and after SATURDAY, JUNE 28th, Trains will leave HOCHELAGA DEPOT as follows:—

	A. M.	P. M.
Express Trains for Hull at	9.30 and 5.00	
Arrive at Hull at	2.00 p.m. and 9.30	
Express Trains from Hull at	9.10 and 4.45	
Arrive at Hochelaga at	1.40 p.m. and 9.15	
Train for St. Jerome at	6.15 p.m.	
Train from St. Jerome at	7.00 a.m.	

Trains leave Mile-End Station ten minutes later.

Magnificent Palace Cars on all passenger trains.

General Office, 13 Place d'Armes Square.

STARNES, LEVE & ALDEN.

Ticket Agents.

Offices 262 St. James and 158 Notre Dame Streets.

C. A. SCOTT.

Gen'l Superintendent Western Division.

C. A. STARK.

Gen'l Freight and Passenger Agent.

THE COOK'S FRIEND

BAKING POWDER

Has become a HOUSEHOLD WORD in the land, and is a

HOUSEHOLD NECESSITY

in every family where Economy and Health are studied. It is used for raising all kinds of Bread, Rolls, Pancakes, Griddle Cakes, &c., &c., and a small quantity used in Pie Crust, Puddings, or other Pastry, will save half the usual shortening, and make the food more digestible.



SAVE TIME.

IT SAVES TEMPER.

IT SAVES MONEY.

For sale by storekeepers throughout the Dominion and wholesale by the manufacturer.

W. D. MCLAREN, UNION MILLS.

17-19-52-362

35 Colborne Street.

60 Perfumed Cards—Motto, Lilly, Floral, Rose Bud—with name and case, 10 cts. LETNA CARD CO., Clintonville, Ct.

IMPORTANT NOTICE.

THE Burland-Desbarats Lithographic Co.  
5 & 7 BLEURY ST.,

Begs to inform the BANKERS, MERCHANTS and BUSINESS MEN of the Dominion, that their large establishment is now in full operation, and that they are prepared to do all kinds of

ENGRAVING, ELECTROTYPING, STEREOTYPING, LITHOGRAPHING and TYPE PRINTING.

Photo-Electrotyping & Wood Engraving

IN THE BEST STYLE, AND AT LOW PRICES.

Special attention given to the reproduction by

Photo-Lithography

OF

MAPS, PLANS, PICTURES OR BOOKS

OF ANY KIND.

From the facilities at their command, and the completeness of their establishment, the Company feel confident of giving satisfaction to all who entrust them with their orders.

G. B. BURLAND,  
Manager.

PEA SOUP!

SYMINGTON'S Prepared Pea Soup

Made from the Celebrated Pea Flour, to which is added

LEIBIG'S EXTRACT OF MEAT.

DELICIOUS, NOURISHING

ANTI-DYSPEPTIC.

Made in one minute, without boiling.

Sold everywhere in 25ct. tins. Wholesale by

WILLIAM JOHNSON,

28 St. Francois Xavier Street, Montreal.

British American BANK NOTE COMPANY,

MONTREAL.

Incorporated by Letters Patent.

Capital \$100,000.

General Engravers & Printers

Bank Notes, Bonds, Postage, Bill & Law Stamps, Revenue Stamps, Bills of Exchange, DRAFTS, DEPOSIT RECEIPTS, Promissory Notes, &c., &c., Executed in the Best Style of Steel Plate Engraving.

Portraits a Specialty.

G. B. BURLAND,

President & Manager.

JUST PUBLISHED

CHISHOLM'S ALL-ROUND ROUTE AND PANORAMIC GUIDE OF THE ST. LAWRENCE,

With corrections to date. It contains full descriptions of the points of interest on the "All Round Route," including Hudson River, Trenton and Niagara Falls, Toronto, Ottawa, Montreal, Quebec, Saguenay River, White Mountains, Portland, Boston, New York. It is profusely illustrated, and is furnished with maps of the Route, and a fine panoramic view of the St. Lawrence River. For sale by booksellers and news agents. Sent post-paid to any address on receipt of the price, 50 cts.

C. R. CHISHOLM & BROS.,

28-52-373

179 Bonaventure street, Montreal.

CHEAPEST AND BEST.



JOHN DOUGALL & SON,

217 and 220, St. James Street, Montreal.

Electrotyping and Job Printing, Chromatic and plain.

TO LET.

In those central premises forming the corner of Bleury and Craig Streets, and in the adjacent house on Craig Street—

OFFICES, double and single. FLATS, admirably adapted for light manufacturing business, with or without steam power. Rent moderate.

Apply to

G. B. BURLAND,  
No. 7 Bleury Street.