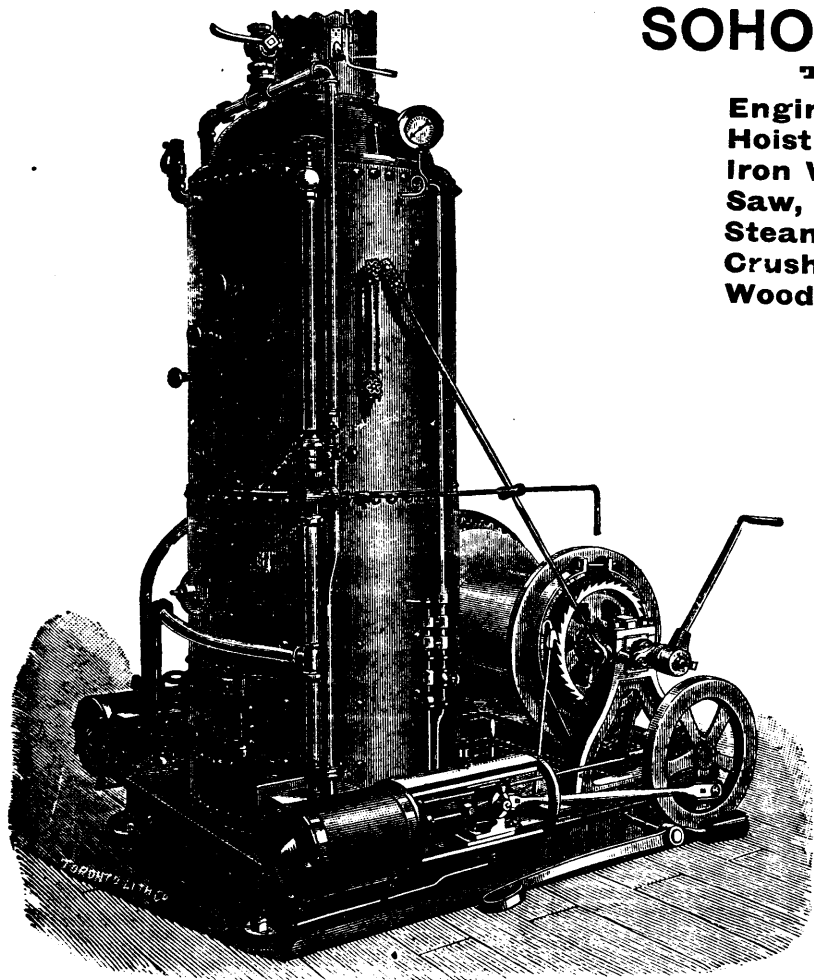
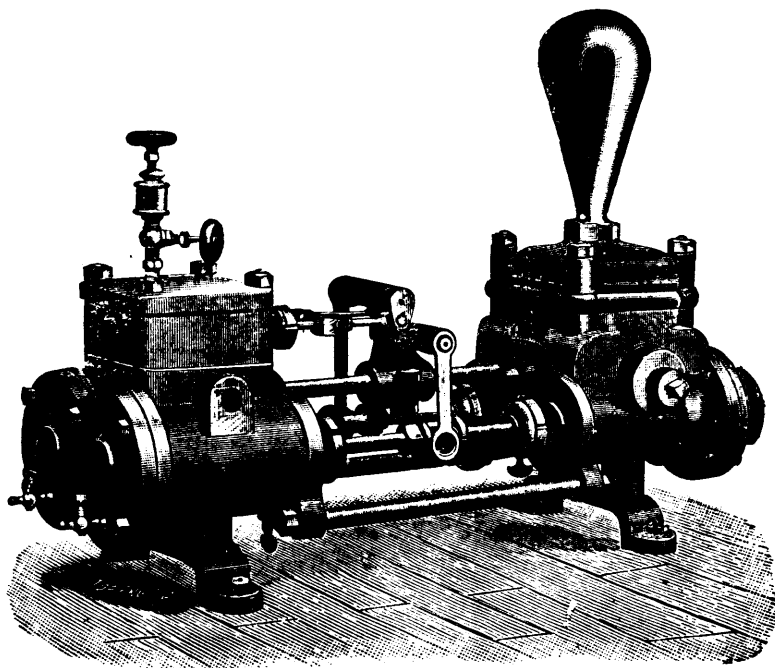


A. R. WILLIAMS, SOHO MACHINE WORKS, TORONTO, ONTARIO.

Engines and Boilers (all styles),
Hoisting Plant (every description),
Iron Working Machinery,
Saw, Shingle and Hoop Machinery,
Steam and Circulating Pumps,
Crushers, Compressors and Derricks,
Wood Yard and Cordwood Machinery.



HOISTING ENGINES—(ALL STYLES.)



SEND FOR CATALOGUES.

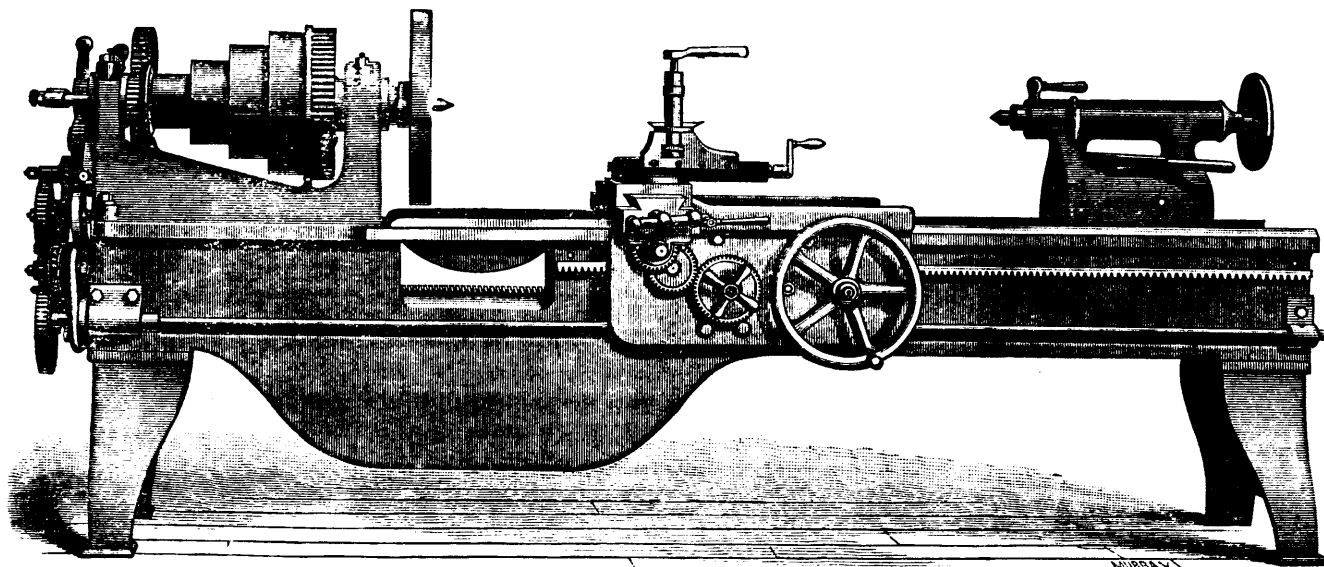
JOHN BERTRAM & SONS,

Canada Tool Works,

DUNDAS, ONT.

MANUFACTURERS OF

Machinists' Tools and Wood-Working Machinery.



36 and 40-Inch Gap Lathes.

Lathes,
Planers,
Drills,
Milling
Machines,
Punches,
Shears,
Bolt Cutters,
Slotting
Machines,
Matchers,
Moulders,
Tenoners,
Band Saws,
Morticers,
Saw Benches.

Locomotive and Car Machinery, Special Machinery—Price List and Photographs on Application.