

Municipal Council

WEEKLY MEETING.

The regular meeting of the Council was held yesterday afternoon. Mr. Cook presided and Councillors Messrs. Outerbridge, Collier, Ryan and Dowden were present. After the reading of the Minutes the following routine matters were brought under the attention of the Council.

A communication was read from the Newfoundland Motor Association with regard to the erection of traffic standards at some of the more populous street crossings in the City, by which was attached a letter from Mr. W. J. Ellis and a sketch of a standard which he thought would be suitable for the City. This was handed over to the City Engineer, who will go into the matter and report to the Council.

Mr. J. Bartlett called attention to the need of having cobble stone drains along Gower Street, replaced by concrete, as the grading at the place in question is not sufficient to take away surface water. It was decided that this improvement be made.

Mr. G. Brownrigg complained of the fact that since the recent closing of Custom House Hill, Hallways Street—from Duckworth to Water Street—was being considerably used for vehicular traffic, and that as the street is very narrow, carriages have been compelled at times to use the sidewalk and to a great extent damage his property. The City Engineer was instructed to inquire into this matter.

H. J. Moore applied for extension of water and sewerage to his dwelling at 1000 Avenue, and also stated that he had some gravel suitable for road purposes, which he placed at the disposal of the City Engineer. Both matters were referred to the City Engineer. The following plans were passed, subject to the approval of the City Engineer:—Dwellings, M. A. King, 1000 Avenue; Extension, J. M. Kelly, 1000 Avenue; Garage, C. Hammond, 1000 Avenue; conditional upon his installing a ventilator in the building. The application of F. J. Dodd to use the same as a garage, was passed, subject to the approval of the Inspector General.

The Central Bakery Company applied for permission to erect new buildings on Flower Hill, in accordance with the City Regulations. The City Engineer, if satisfied, may issue the necessary building permit.

The Engineer's report on the work done by the several departments under his control for the past week was read. He stated the placing of sewerage extension to the vicinity of Hill would cost in the vicinity of \$1000. Some time ago the property owners in this section petitioned for extension of the mains. It was decided that a statement of the cost to be paid by each individual when their reply is received, the same will be given further consideration.

The Engineer also submitted a plan for the widening of Topsail Road, near the General Protestant Cemetery, and it was decided that this be deferred to the present.

He stated that the macadamizing of Duckworth Street, Waterford Road, New Gower and other streets was now well under way and that it was expected to have same completed in a very short time.

The Medical Officer of Health reported three new cases of Scarlet fever and one of Typhoid in the City during the past week.

Statements of Revenue and expenditure for June 30th last were tabulated and considered fairly satisfactory. With the granting of requisitions for passing of accounts, the meeting adjourned.

JULY--ALWAYS A BIG MONTH HERE

**Finds Us with a Meritorious Array of Values
Setting a Pace in Value-Giving Hard to Equal
OPPORTUNITIES
Crowd Thick & Fast--Avail of Them**

The first of the Season's Clearances appear this week. What great opportunities to procure Apparel for which there is such a long season of serviceableness ahead. And as the month progresses, this will be the big feature--clearing lines from every Department, regardless of cost. It is our way of doing business--carrying nothing over from season to season--but starting every new season with clean, crisp, spanking new merchandise from every worthy source. Just glimpse the following for

**FRIDAY, SATURDAY
and MONDAY**

**Don't Miss These
SHOE Values**

SKUFFER SHOES—Girls' and Boys' Skutter Shoes; sizes 5 to 11; Dark Tan, broad fitting shape, stitched soles; great for romping time. **\$1.49**

LADIES' SHOES—Finest Patent Leather Pump style Shoes. Black with buckle front, medium heel, semi-broad toe; dressy, smart, and quite fashionable. Spec. **\$4.35**

LADIES' BOOTS—Neat fitting soft Donagola Kid Boots, laced style, pointed toe, medium heel; worth double the price we ask for them. Friday, Saturday and Monday. **\$2.68**

CHILDREN'S BOOTS—Sizes 3 to 8, laced and buttoned in Black and Tan Kid; comfort shape for tender little feet. Special **\$1.08**

APPRECIATION

To visitors homeward bound we bid adieu, and trust that their visit citywards was full of pleasure and profit, and that their expectations were fully realized. To the many that favored this Store, we are deeply grateful, and hope that they found everything satisfactory. We overheard many complimentary remarks--no values, orderliness and store arrangements--which we take as an indication that our efforts were fully appreciated. And now that many have made the acquaintance of this **NIGHTY GOOD STORE**, we trust they will keep in touch with it through the medium of our

Mail Order Service.
Study our Newsvy Advertising every week. Consider the economies it contains, the time-liness of its offerings and the savings it means to the family exchequer.



JULY CLEARANCE SALE

of
DRESSES
Girls' Guamp DRESSES **RATINE DRESSES**

Great range of them in Linens and Jeans; sizes to fit 8 to 14 years; plain shades of Sage, Crimson and Reseda; others in pretty Checks, plaited skirt with body, showing shoulder strap with buckle, simple, sensible every-day Dresses; \$2.20 values. Special

\$1.59 \$3.95



**SHIRT WAISTS
and JUMPERS**

A snappy line--Ladies, some in Silk Jersey, others in crepe de chene, pretty shades of Grey, Jade, Navy, Brown and Henna, round square and V neck, long and short sleeves, braided and beaded, an unusually pretty display; value **\$3.75** \$4.75 Friday, Saturday and Monday

GIRDLE CORSETS—Ladies' warm weather Girdle Corsets, 19 to 30 inch sizes; beautifully fashioned in Pink, Coutil, 2 suspenders, low bust cut. You should try them. This line Spec. **69c.**

DRESSING JACKETS—A special lot in flowered Cottons, Grey and White, subdued tones, Peter Pan collar, trimmed with ric-rac braid, long sleeves. Reg. **59c.** Special

SLIP-ON JERSEYS—Indispensable affairs for the season. They come in fine Wool; shades of Peacock, Sage, Fawn, Nile, Grey, Black and White, round neck, short sleeve and girde, nice for vacation time and evening wear. Special **\$1.89**

MISSES' KNICKERS—Fine White Lawn Knickers to fit 12 to 16 years, umbrella leg; embroidery trimmed and pin tucks. **77c.** Reg. \$1.00. Special

EASY WAISTS—For children from 2 to 13 years, fine White Jersey make, underpriced. Fri-**54c.** day, Saturday and Monday

JUMPERS and WAISTS—A rare snap in White Voile Jumpers and Waists, pretty models, showing hemstitched round V and Square neck, long and short sleeves, trimmed with Valenciennes Lace. Reg. \$2.00. Friday, **\$1.39** Saturday and Monday

"SPORT" BANDEAUX—The smartest head dress for sport wear; comes in beautiful variegated hues, keeps the hair tidy, any colour to suit any individual taste; perfect in fit. Special **45c.**

**A Good Time To Buy
Some Pretty
Wash Fabrics**

FRENCH RATINES—Uncommon looking Dress Cloths, grounds of Tan, Peach, Lemon and Cream, plain and fancy. Reg. 80c. yard for **49c.**

GINGHAMS—A Chabra Gingham, extra fine, in texture and unusually fine, in colour bindings. Regular 45c. yard **39c.**

COTTON VOILES—New! Snappy looking fancy patterned Dress Voiles, grounds of Royal, Navy and Brown, all over white pattern. Reg. 50c. yard. Friday, **45c.** Saturday and Monday

WHITE PIQUES—Soft, finish American White Piques; wash perfectly and always so good looking. The yard **39c.**

COTTON POPLINS—White Cotton Poplins, 36 inches wide, splendid quality. **36c.** The yard

COTTON GABARDINES—34 inch pure White Gabardines, nice for summer Skirts. The yard **78c.**

WASH SUITS

For the BOYS.
Good Styles, Top-Notch Values

One piece "Buster Brown" style, wash Suits, in neat striped patterns, to fit 2 to 8 years, strong, easy to do up again and becoming. Reg. 1.30 **98c.** Special

TUNIC SUITS—Boys' striped Wash Suits, in the strongest of English Calicoes, showing Navy Blue Sailor collar and cuffs, belted; fitting 3 to 8 to 8 years. Reg. \$2.60 Special **\$2.39**

WASH SUITS—Very nifty style, in Cream linen, unusually fine quality plain blue, trimmed, belted tunic, collarless, nice and cool for little chaps from 3 to 6 years. Special **\$2.39**

TUNIC SUITS—Another particularly fine range in blue striped linens, showing embroidered, white collar, belt and buckle front; fitting 3 to 8 years. Our Special **\$1.69**



**Whew! But it's Hot.
Got Your Straw Hat Yet?**



English Boaters—a man's Hat, gives him that jaunty style that the season calls for. Ours—not only the latest, but they bring you the best value along the street.

Special: **\$1.50, \$2.40, \$2.90**

CREPE TIES.

Here is just the nicest looking tie you could desire, this snugly, holds its shape, delightful colour mixtures. Special **\$1.10**

MEN'S CAPS.

Sporty Caps for motoring, golfing and every day wear. Fawn shades, light weight, silk lined. Special **\$1.70**

KERCHIEFS.

In White lawn, full size, showing broad hemstitched border, A1 quality. Our Special **28c.**

SOCKS.

8 dozen of special selected Socks, in a nice light cashmere weight, assorted new shades. **65c.** Special

LISLE SOCKS.

Absolutely fine, in shades of Blue, Grey and Brown, spliced heel and toe, they wear excellently. Special **50c.**

PORUS-KNIT UNDERWEAR.

The coolest you would want, pure White Porus-knit Shirts and Pants, short of long sleeved shirts, knee and ankle length pants. Try a suit for the warm sport. The garment **79c.**

COLLAR PINS.

Gold plated soft collar Pins, approved style, for smart dresses, screw ball ends, each **23c.**

SNAPPY BOWS.

Great range of fancy Silk "Oh! Boy" Bows, the latest in Boy styles. **65c.** Special

Silk Tubing

Several pieces of popular Knitted Silk Tubing just to hand; shades of Maize, Pink, Sky, Black and White, Popular to-day for Ladies' Vests, Camisoles, Jumpers, etc., 36 inch circular, a delightful material for warm weather wear. Reg. \$1.40 yard. Friday, **\$1.17** Saturday and Monday

SILK POPLINS—Several pieces of superfine Silk Poplins; shades of Navy, Sage, Reseda, and Tan. Blue; nice for children's special dresses. Reg. \$1.10. **98c.** Special

ITALIAN CLOTHES—Fast Black, double width Italian Cloths offering a good value to-day at **98c.**

**Great range of
Boys' Shirts
and
Shirtwaists**

Smartly styled, good looking striped patterns, with and without collar, great for Him for knock-about wear; full size range. Dollar value. Special **79c.**

BOYS' SWEAT HATS—Real Manly style--Boater shape, just like Dad's; light weight and always a good looking Hat on **\$1.39** any boy. Special

"AMERICAN BOY" HATS—Semi-Soft Felts, round shape with deated crown, becoming hats, in shades of Peacock, Nigger and Black. Special **\$1.65**

Home Requirements

CREAM CROSS-BARRED Madras Muslins, making very effective hangings. Note **19c.** their Special Price

CREAM TABS—4 inch beautifully patterned Madras Muslins, with scalloped edge, wash splendidly. Reg. 80c. Friday, Saturday and Monday **69c.**

CURTAIN LACE—40 inch White Curtain Laces, showing nice all-over patterns and good looking borders; wave edge. Special the yard **33c.**

SHAMS—Plain, offering a nice suggestion to those eager to embroider, 23 x 33 size; hemstitched border. Regular \$1.25. Special each **\$1.10**

SLIP SHEETINGS—28 in. White Slipings, inexpensive and quite alright and good enough when a low price Sliping is required. Friday, Saturday and Monday **18c.**

PILLOW CASES—Some of our good grade Pillow Cases go on sale, beautiful quality White Linen, embroidered and hemstitched buttonhole edged. Reg. \$1.60 each. Friday, Saturday and Monday **\$1.48**

SIDEBORD CLOTHS—Prettily embroidered and hemstitched White Linen Cloths, 40 inches long. To clear **42c.**

DUSTPROOF ALARM CLOCKS—The neatest yet showing a clean White face in round nickel case, accurate time-keeper and reliable chime in alarming. Special **\$1.75**

DOUBLE WIDTH TICKINGS—Strong herring-bone Tickings Black and White striped pattern, 56 inches wide. **56c.** On sale at

CARPET BINDING—3 inch bindings, in assorted mixtures, Crimson, Green, Yellow, Black. The yard **9c.**

BLINDS—36 inch Plain Cream and Plain Green Window Blinds, 6 feet long; complete with fittings. Friday, Saturday and Monday **79c.**

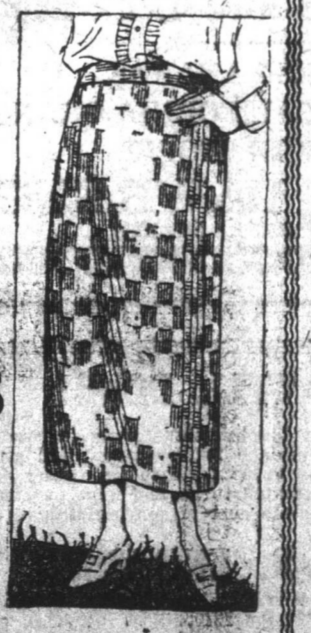
**SPECIAL SALE
of
DRESSES**

Handsome styles in Light and Dark Cotton Voiles, others in service-giving Wash Gingham, neatly trimmed all of them; most extraordinary values at our July Clearance Prices

2.49 & 2.98

Skirt Embroideries

A surprising value in handsome Skirt Embroideries, 36 inches wide, deep scalloped edge, lace patterns, on firm even cloth; values to \$2.80 yard. Friday, Saturday and Monday **\$1.49**



**Smart Looking
Grey Flannel Pants**

Men's medium Grey Flannel Pants, excellent for summer wear, carefully tailored, cuff bottoms, strap hips, loops for waist, belt. They're special at **\$5.00**



**Excellent Values Here in
WHITE QUILTS**

BEDSPREADS—Full size, Snow White Marcella Quilts, elegantly patterned centre, with broad fancy self borders, a necessity in every home. Reg. \$4.30 value. Friday, Saturday and Monday **\$3.79**

HONEYCOMB QUILTS—26 extra large trimmed White Honeycomb Quilts, these are beauties, having a generous spread and are quality through and through; value for \$5.50 **\$3.38** to-day. Special

LACE QUILTS—Strong bench Cloths, in nifty Jasi patterns, white and coloured grounds. Special **35c.**

RATINES—Pure White Ratines, 36 inches wide. These offer excellent value at **63c.**



Scrims To Clear

We offer some rare values in service-giving Curtain Scrims for the week-end.

30 INCH WHITE—with coloured border and others showing floral borders. Special **16c.**

CROSS BARRED SCRIMS—Several pieces, in assorted cross bar patterns, neat, under priced **14c.**

36-INCH SCRIMS—These are crossbarred patterns and look very well made up. The yard **23c.**

Slip-on Jerseys

Indispensable affairs for the season. They come in fine Wool; shades of Peacock, Sage, Fawn, Nile, Grey, Black and White; round neck, short sleeve and girde; nice for vacation time and evening wear. Special **\$1.89**