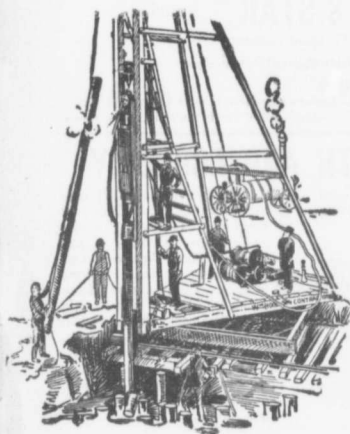


has become a matter almost of expediency rather than of choice, notably in the case of the producer gas distribution scheme throughout the honeycombed district of South Staffordshire in England. The most important first application, however, was in connection with the line of piping for Coolgardie water supply in Australia, which extended for 300 miles inland. In that case, one of the considerations was the lighter weight and facility of trans-

port provided by the steel pipe as compared with the thick cast iron conduits. The experience gained has been all in favor of an extension of the system of steel piping, but the producing capabilities of the country have scarcely been adequate. The only technical difficulty is the forming of the longitudinal joints of the plates forming the pipe and the design of a suitable coupling connection. But the problem has been solved in connection with

the Coolgardie scheme and the South Staffordshire gas supply, and it is interesting to note that a large Glasgow concern intend to manufacture pipe up to 48 inches in diameter.

The entire plant of the Ontario Portland Cement Company at Blue Lake, near Branford, Ont., is expected to be in operation before the end of this month.



PILE DRIVING

on land or water by Steam Pile Drivers or Drop Hammers.

**Portable Boilers
Hoisting Engines
Pumping Machinery**

TO LET

Bridge Building, Trestle Work, Wharves, Dams, Diving Submarine Work and General Contracting.

WM. HOOD & SON
10 Richmond Sq. - MONTREAL

DEBENTURES

Municipalities contemplating the issue of Debentures will find it to their advantage to communicate with

G. A. STIMSON & CO.

Investment Dealers

24 and 26 King St. W. - TORONTO

THE DELANO-OSBORN ENGINEERING CO., LIMITED

MANNING CHAMBERS, TORONTO

CONSULTING CIVIL, MECHANICAL AND
ELECTRICAL ENGINEERS.

ALWAYS IN STOCK

PIG LEAD, PIG TIN AND SOLDER

Syracuse Smelting Works, Montreal, P.Q.

Notice to Contractors.

**The Niagara Falls Machine &
Foundry Co., Limited,**
Niagara Falls, Ont.,

are making a specialty of improved
HOISTING AND BUILDING ENGINES.
Write for Prices.

Pittsburgh Testing Laboratory, LIMITED

Inspecting and Metallurgical
Engineers and Chemists

SPECIALTIES: Inspection of RAILS and all
material for BRIDGES, BUILDINGS, and
other structures, cast iron pipe, wood
and steel railroad cars.
MANUFACTURE AND ERECTION.
Expert examination and reports, chemical
analyses and physical tests of all kinds.
Cement Testing.
146 St. James Street, - Montreal, P.Q.



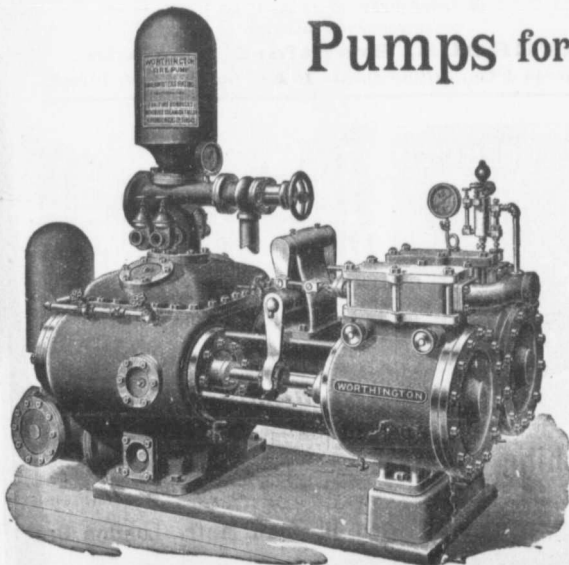
PILE DRIVING and Foundation Work.

By 5-ton Automatic Steam Pile Hammer,
Water Jet or Drop Hammers, Dock Building,
Submarine Work and Dredging.

BUILDING MOVER AND WRECKER

General Contracting.

JNO. E. RUSSELL, - Toronto
908 Queen St. E. - Phone M. 2007.



Pumps for Waterworks

**Waterworks Systems
Installed**

*Steam, Hydraulic, Electric,
Gasoline, Air Lift and
Automatic Rams.*

**Steam Boilers and
Filters**

Write for Prices and Particulars.

The John McDougall

CALEDONIAN IRON WORKS CO., LIMITED

MONTREAL, P.Q.