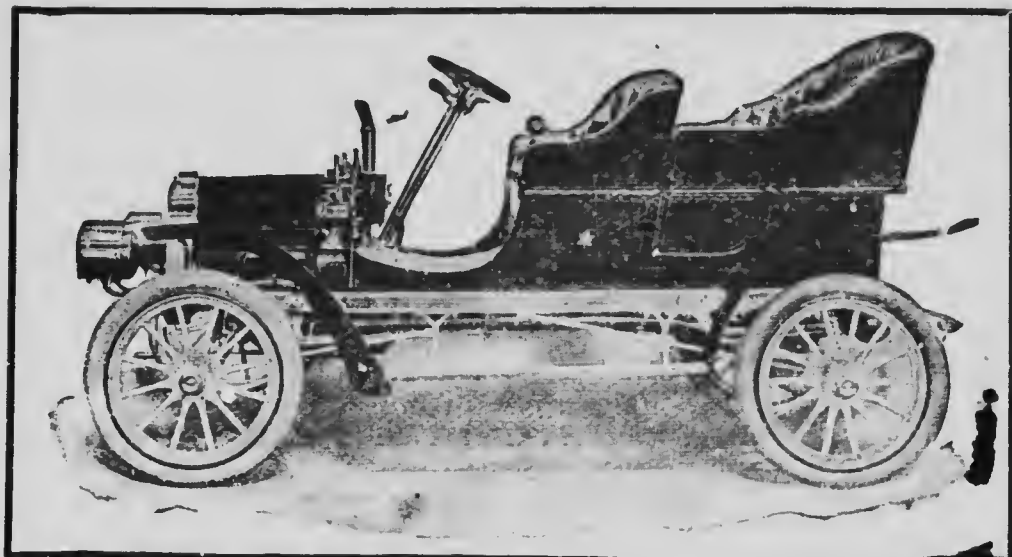


1143-15160



The New Auto

The "RUSSELL," the greatest of the new Automobiles, is on exhibition at the Fair. It's a "Made in Canada" Car of great power and splendid design and finish. Built to stand the wear of Canadian roads.

We also handle solely for Canada the

PACKARD THOMAS PEERLESS
POPE-TOLEDO AUTOCAR STEVENS-DURYEA
WAVERLY POPE-TRIBUNE

DON'T FAIL TO SEE THIS EXHIBIT

Bicycles for 1906

The new Bicycles for 1906 are on exhibition. They have all the new improvements—Hygienic Cushion Frame, Sill's Handle Bar, and Morrow Coaster Brakes.

CANADA CYCLE & MOTOR CO., Limited

GENERAL OFFICE AND WORKS

TORONTO JUNCTION, - ONT.

Branches—WINNIPEG, MAN.; VANCOUVER, B.C.

709.04
7592