

The CANADIAN COURIER

A National Weekly.

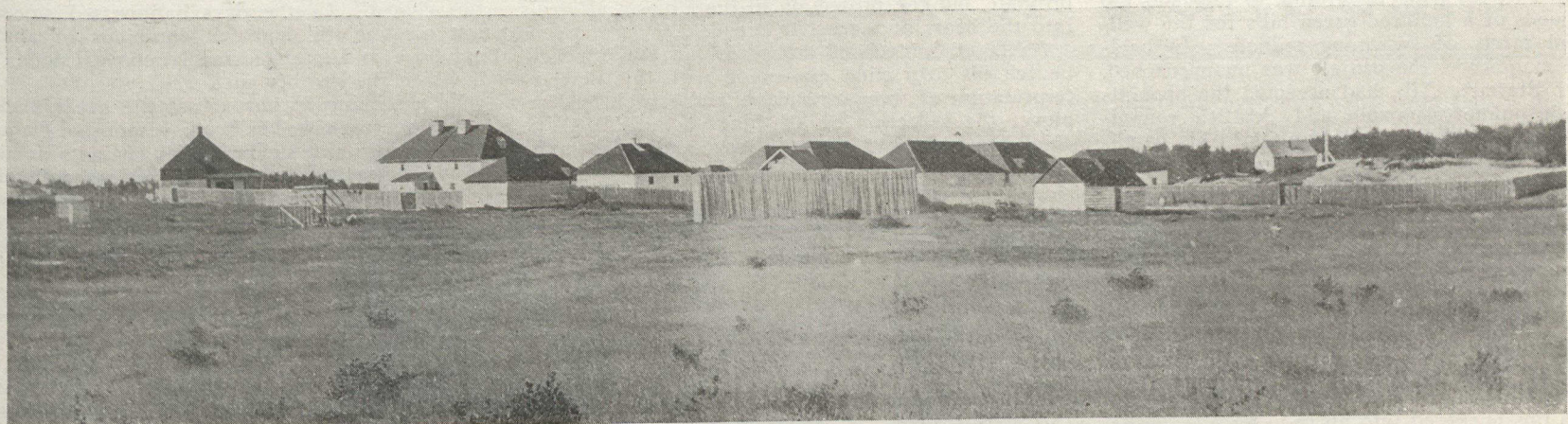
Vol. XI.

April 13, 1912

No. 20

IN THE "ANNEXES" OF ONTARIO AND MANITOBA

Which Will be Opened to Settlement by the New Hudson's Bay Railway



General View of Norway House, a Hudson Bay Post, About Twenty Miles North of Lake Winnipeg.



Natives Making Canoes at God's Lake.

IN a district which is about three hundred miles north and east of the north end of Lake Winnipeg are quite a number of Indians—Swamp Crees—of whom those shown in the accompanying photographs are types. They receive yearly from the Dominion Government five dollars per head, which sum they spend on flashy trinkets and for such articles of clothing as hats, collars and white shirts. They are also given some flour and bacon, but they make but little attempt at growing anything. They depend much upon fish for food.

The Government agent and the Hudson Bay Company's men are the only whites whom these Indians see.

A white man who travelled through this district believes that instead of five dollars per head, which these Indians spend quickly—and for the most part foolishly—they should be given vegetable seeds and taught how to make and care for gardens. They also need clothing, and need to be taught better ways of living. They formerly wore furs, but they now sell the furs in order to obtain food. So they are poorly clothed, and as their tents and shacks are filthy they quickly contract disease.

The district has some good agricultural land, considerable timber, good possibilities for power development, and a fair supply of minerals.



Indian Children at Island Lake.



Where Power Could be Developed; Rapids in Island Lake River.



Unloading, at Island Lake, Supplies from Norway House.

Photos by G. H. Scott.