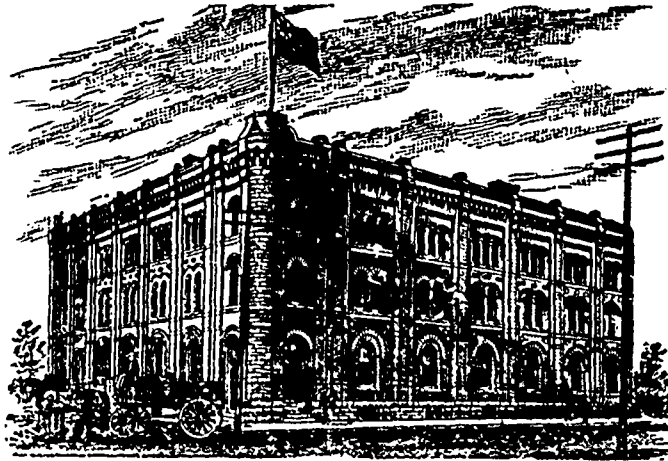


GOODS SOLD TO THE
TRADE ONLY.GOODS SOLD TO THE
TRADE ONLY.

G. F. & J. GALT,

DIRECT IMPORTERS
TEAS, SUGARS, WINES, LIQUORS and GENERAL GROCERIES
CORNER PRINCESS AND BANNATYNE STREETS, WINNIPEG, MANITOBA.

WM. B. HAMILTON, SON & CO.

WHOLESALE MANUFACTURERS OF AND DEALERS IN

BOOTS, SHOES AND RUBBERS,

15 and 17 Front St. East, TORONTO.

Represented in Manitoba, Northwest Territories and British Columbia by **ALBERT FRENCH**

Redmond, Greenleese and Co.

—WHOLESALE—

HATS, CAPS AND FURS.

134 Princess Street,
WINNIPEG - MAN.

Fall Shipbuilding on the Lakes.

An exchange says: "There are now 45 vessels with a carrying capacity of 76,030 gross tons building and under contract to be ready at the opening of navigation in the lake shipyards. Their value is \$1,896,000. The value of the United States lake marine already built, as given at the Detroit convention, is \$62,000,000, to which might be added \$4,300,000 for the Canadian lake marine, making an aggregate valuation of over 70,000,000. Of these 45 vessels now building 32 are of steel and 13 are of wood, and 40 of them are steamers. The following table shows the work under contract on December 1 for the years mentioned.

	No. boats.	Capacity, gross tons.	Valuation.
1886.....	31	65,770	\$1,075,000
1887.....	60	108,521	8,327,000
1888.....	59	100,950	7,124,000
1889.....	46	121,770	7,566,000
1890.....	38	77,950	5,337,000
1891.....	45	70,000	4,896,000

Nearly all of the vessels to be built this winter are freight carriers, 11 of them with capacities varying between 3,000 to 3,700 gross tons. In addition to the above, not included because it will not be ready at the opening of navigation,

STEVENS & BURNS

MANUFACTURERS

Elevator Engines and Boilers

ERTEL VICTOR HAY PRESSES

—AND—

PORTABLE ENGINES AND THRESHERS.

WINNIPEG, - - MAN.

is the 'straight-back,' to be built by the Detroit Dry Dock Company, which is intended to carry 5,000 tons on 16 feet draught, and which will cost about \$225,000."

Freight Rates and Traffic.

An eastern exchange says that there has been a reduction in through freight rates on heavy grain from west of Toronto to Liverpool of 2c per 100 lbs, the railways now offering to take stuff at 33c per 100 lbs.

The Chicago Trade Bulletin of Jan. 18 says: Quite a good demand prevailed for cars during the past week, and shippers were enabled to forward a little more property. Considerable inconvenience is experienced, however, and there is still serious complaint of delays in shipments. Some of the trunk lines are furnishing more cars, but the supply is still inadequate to meet general requirements. All rail rates to the seaboard were notably firm on the basis of 25c flour and grain and 30c provisions to New York. A little demand prevailed for freights through to European markets, and more property was accepted. Through rates to Liverpool were stronger, and ranged at 41

C. H. Mahon & Co.

—MANUFACTURERS OF—

BOOTS AND SHOES,

Solid Good Wearing Goods in all lines. Lowest Prices. Send for quotations.

WINNIPEG, - MANITOBA.

SHIP YOUR BUTTER, EGGS, POULTRY, HOGS

AND ALL LINES OF PRODUCE
TO THE

PARSONS PRODUCE COMPANY

Wholesale Commission Merchants,

WINNIPEG, - MAN.

Highest Market Prices Secured for Shippers

REFERENCES—

Imperial Bank of Canada, Winnipeg.

Parkhill Produce Co, Parkhill, Ontario.

to 47½c flour, 41 to 41½c wheat, 41½ to 41½c corn, and 52½ to 59c provisions, according to route. A good inquiry prevailed for vessels to load and store grain and flax seed until spring, and two or three charters were made on the basis of 5½c wheat and flax seed to Buffalo.

California Gold Mining.

Gold mining, while still an important industry in California, according to the San Francisco News Letter, is no longer a leading one, singular as the fact may seem in eastern eyes. They 'have found a surer, safer and better way of extracting gold from the soil than that of washing the yellow metal out of it' During the past year in wheat and fruit alone the farmers of California have taken from the soil more money than ever was produced in the same time from the gold mines. The exports of wheat alone will reach the value of more than \$37,000,000, while 20,000,000 gallons of wine will be exported. This has not alone a material bearing, but it has a political one as well.

Montreal Fur Prices.

The fur trade has been put into very bad shape by the mild weather up to Christmas, and now the local demand may be considered as about over. Reports from England are not encouraging and merchants are not willing to pay anything above quotations; which may be reduced at any time. The amount coming in at present is small and no large quantity is expected until the end of next month. We quote—Beaver, \$3.50 to \$4 per lb; bear, \$12 to \$15 per skin; fisher, \$2.50 to \$4; red fox, \$1 to \$1.25; lynx, \$1.50 to \$2.50; marten, 75c; mink, \$1 to \$1.50; muskrat, fall, 10c; do winter, 15c; otter, \$2 to \$12; raccoon, 40c, 60c and \$1.—Trade Bulletin.

A correspondent of the Breeders' Gazette writes: "I have been a cattle feeder for ten years, handling from fifty to two hundred steers each year, and I have fed flax straw several times with good success. This year I had twenty acres of flax and it was so badly bleached from the heavy rains that I thought at the price I would try feeding it to the steers in the straw. There are 200 in the yard on full feed. The result has been so satisfactory that I think I can recommend it to any one for the feed yard."