

POOR DOCUMENT

MC 2035

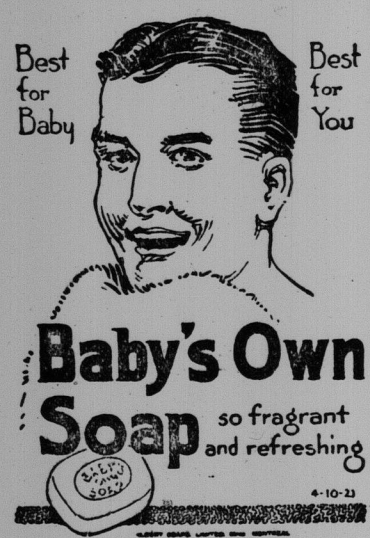
THE EVENING TIMES AND STAR, ST. JOHN, N. B., WEDNESDAY, NOVEMBER 30, 1921

PLOW UNEARTHS OLD BATTLEFIELD

Skeletons, Tomahawks, Brass Kettles, Wampum, Arrowheads, Shells and Beads in Profusion.

Milton, Nov. 30.—What is believed to be an Indian battlefield was discovered last week by Sydney Mountain on his farm on the third line, Esquimaux, known as the Nathan Turner homestead, which has been in the Turner family for over one hundred years. Mr. Mountain was plowing some new ground, when the plowshare caught in the handle of a large brass kettle, the bottom of which had corroded almost away. In the kettle was an Indian's skull.

Digging operations were begun at once, and in a short time over two dozen Indian skeletons were unearthed, all lying in a circle around the kettle. Any-



Baby's Own Soap
so fragrant and refreshing

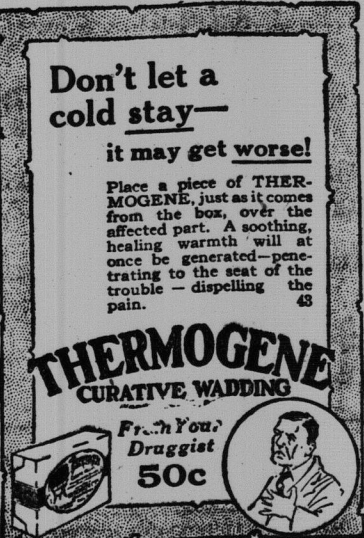
other kettle was dug up later. Several tomahawks, a lot of wampum, arrowheads, shells and beads were also found. Many souvenir hunters visited the scene today. It is believed the remains of the warriors have been lying in their

present resting place for upward of two hundred years. Operations will be continued in order to make further historical discoveries. The name of the township, Esquimaux, is an Indian name, and this particular locality, five miles north of Milton, is one of the oldest settled sections of Upper Canada. The Church there is over one hundred years old. A great deal of valuable history of the early days of the Dominion is to be learned through the descendants of Canada's first settlers, who located in what is now known as the Scotch Flock over a century ago.

TIMBER BUSINESS DUE TO IMPROVE.

G. C. Piche Predicts Normal Conditions in Quebec Next Summer.

G. C. Piche, chief of the forestry service of Quebec, predicts that normal conditions in the exploitation of forestry resources of that province will be resumed next summer. However, his forecast states that the prices will not be over those existing in 1914, but that there will be a resumption of business



Don't let a cold stay—
it may get worse!
Place a piece of THERMOGENE just as it comes from the box, over the affected part. A soothing, healing warmth will at once be generated, penetrating to the seat of the trouble—dispelling the pain.

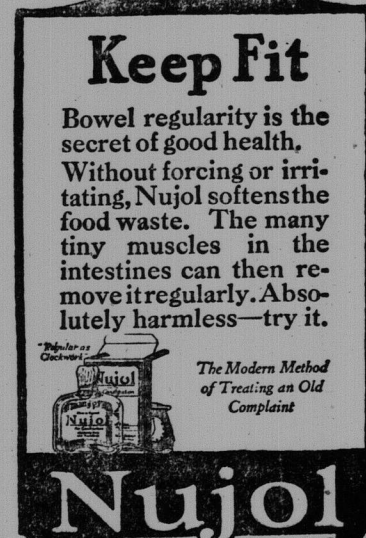


Ah-Ah-Tee-Choo!
Did this ever happen to you?
Mentholatum
Is a wonderful Relief for Colds, Catarrh, Chapped Skin, Etc.

centage. In the Ottawa valley there is very little decrease in the activity, because wood there is not cut as much for pulp, but in the other sections pulp men are very cautious, due to the fact that they have still on hand a good quantity and do not want to take risks as to the immediate future. The price of lumber has taken a considerable fall, but is still over the 1914 prices, and I think these will be re-established.

PRINCE MEETS THE CHIEFS OF RAJPUTANE

Admirer, R. L. Nov. 30.—The Prince of Wales was here yesterday to meet the ruling chiefs of Rajputane and visiting Mayo College. A holiday was proclaimed. A large part of the population thronged the streets and gave an entirely friendly reception to the prince. An address of welcome was presented by the municipality.



Keep Fit
Bowel regularity is the secret of good health. Without forcing or irritating, Nujol softens the food waste. The many tiny muscles in the intestines can then remove it regularly. Absolutely harmless—try it.

USE The Want Ad Way

The Greatest of Them All Lesser's Mid-Winter Sale

STARTING THURSDAY, DEC. 1, FOR 7 DAYS—No Exchanges; No Approvals.

Right in the season when people are anxious of procuring their Winter clothing and dresses. Our buyer while in the clothing centres has accumulated one of the finest assortments of clothing in years from two factories which had to discontinue business on account of financial difficulties. The merchandise of these factories is offered to you at a reduction of 30 p.c. to 50 p.c. lower than the regular price. Take advantage, as it will pay you to do so.

LADIES' COATS	LADIES' DRESSES	LADIES' FURS
25 Opossum trimmed Duveltyne Cloth Coats; all silk lined and interlined. These coats all worth up to \$80.00. Mid-Winter Sale Price \$45.00	75 Canton Crepes. These are in the newest styles for Winter season. There are only one or two alike. Value regular up to \$50.00. Mid-Winter Sale Price \$34.00	Raccoon Stoles and Muffs. Mid-Winter Sale Price \$17 and \$19
20 Beaverine trimmed coats, in all shades and heavy Velours and Duveltyne, all interlined coats. Value to \$75. Mid-Winter Sale Price \$42.50	30 Satin Dresses. All the newest mid-winter styles; all samples. Regular up to \$45.00. Mid-Winter Sale Price \$28.00	Taupe Wolfe, natural and black Wolfe Stoles. All reduced 1-3 off regular price.
40 Beaverine trimmed Coats; all silk lined and interlined; embroidered and plain. Priced \$50 to \$60. Mid-Winter Sale Price \$39.75	100 Special Silk Dresses, in all shades and sizes. Regular up to \$30.00. Sale Price \$12.75	1 Red Fox Set—Special price..... \$15
36 Beaverine Fur Trimmed Coats, half, some full lined; in all shades. Regular price up to \$37.50. Mid-Winter Sale Price \$26.00	40 Georgette Crepe Dresses, headed and other trimming. Values to \$15.00. Mid-Winter Sale Price \$16.50	35 Muffs, in black Wolfe, taupe Wolfe. Sale Price \$5.00
5 Only "Salts" Plush Coats; all silk lined and interlined; sizes 36-46. Regular price up to \$55.00. Mid-Winter Sale Price \$37.50	All other Silk Dresses not listed, 1-3 off regular price.	2 Opossum Sets. Mid-Winter Sale price \$27.50
15 Pressed Black Plush Coats. These are the first we've seen since the war. Should sell for \$37.00. Mid-Winter Sale Price \$20.00	55 Serge and Tricotine Dresses, all exclusive styles and the very best. These should sell from \$40 to \$45. Mid-Winter Sale Price \$32.95	12 Sealing Fur Stoles, 14 inches by 72 inches. Regular price \$31.00. Sale Price \$22.00
100 Wool Cloth Coats. These are sold regardless of cost. Sale Price \$12.00 to \$18.00	35 Serge and Tricotine Dresses, all exclusive styles and the very best. These should sell from \$40 to \$45. Mid-Winter Sale Price \$32.95	12 Black Siberian Wolfe Sets... \$12.50
12 Velour Coats. Regular price up to \$35.00. Sale price..... \$19.95	\$35.00 Serge Dresses \$25.00	75 Ladies' Tweed Rubber Coats... \$8.75
Special—10 Fur Trimmed Coats, with fur cuffs. Mid-Winter Sale Price \$15.75	\$30.00 Serge Dresses \$22.50	All Wool Plaid Skirts. Regular to \$15.00. Sale Price \$8.75 and \$7.75
Special—12 Coats for \$9.00	\$28.00 Serge Dresses \$19.75	
	\$25.00 Serge Dresses \$17.50	

MEN'S OVERCOATS	MEN'S SUITS	Store Open
25 Men's All Wool Grey Ulster Overcoats. Regular \$33.00 value. Mid-Winter Sale Price \$22.00	\$45 Men's Suits \$30.00	Monday
Regular \$45 Men's Coats..... \$30.00	\$40 Men's Suits \$28.00	Friday
Regular \$30 Men Coats..... \$20.00	\$35 Men's Suits \$22.50	and
Regular \$25 Men's Coats..... \$17.50	\$30 Men's Suits \$20.00	Saturday
Special—35 Men's Overcoats..... \$10 and \$15	\$25 Men's Suits \$17.50	Evenings
	50 Odd Suits in all shades. Special price \$12.95. Values to \$40.	

Come along where your dollar does double action. Be convinced. We advise patrons to do early shopping. Shop in the mornings.

ALEX. LESSER - 210 Union Street

Opposite Opera House

WIEZEL'S CASH STORE

Our Year-End Sale is Your Opportunity

To Supply Your Present and Future Footwear Needs

Delighted buyers crowd this store daily for this big Year-End Sale. The Distinct Money-Saving Values offered during this sale must appeal to your sense of Wise-Economy. Listed below are a few of the many outstanding bargains to be had at this sale.

SPECIALS:

Men's "Hart Shoes," in the latest styles and leathers; regular \$12.50 and \$13.50. Sale Price \$9.95

Men's "Regal Shoes," regular \$10.50 and \$11.00; any style. Sale Price... \$8.95

Women's Brown Broadcloth, Twelve-Button Spats. Sale Price \$2.85

Women's Boudoir Slippers, in all the desired shades, regular \$2.50. Sale Price \$1.75

Men's Working Rubbers, good quality. Sale price... .98c.

A Broken Lot of Women's Rubbers, not all sizes, 59c.

Boys' One Buckle Overshoes, sizes 11-1. Sale Price \$1.65

DO YOUR XMAS SHOPPING NOW

A Special Discount of 10 p.c. off any price in the store, not specially priced

WIEZEL'S CASH STORE

SUPERIOR FOOTWEAR
243 Union Street

MAIL ORDERS PROMPTLY ATTENDED TO

The Greatest Help

to the progress of King Cole Tea has been the generous praise given it by its users. They were enthused with its full rich flavor,

and to their words of commendation is largely due the very widespread sale King Cole Tea has today.

"You'll like the flavor"

MUTT AND JEFF—IT'S HARD TO GET THE COIN AWAY FROM MUTT

By "BUD" FISHER

