



DRAWN BY HARRY FENN.

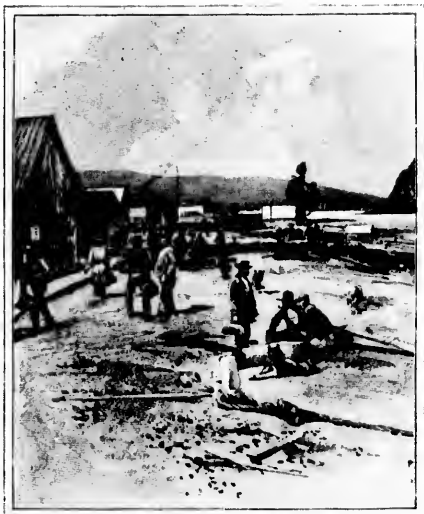
THE ALASKA COMMERCIAL COMPANY'S STORE AT DAWSON CITY, WHICH COST \$50,000 TO BUILD.

five hundred miles by steamboat, which makes it easy of access to prospectors; and as the forks run parallel with the Yukon, extending beyond Fort Hamlin, it brings this district within the gold belt, in which are contained the diggings at Forty Mile, Circle City, and Dawson. Up to the present time only one creek has been worked. At first only eight dollars a day were taken out; but the work was not done in the thorough manner now in use, and there is no telling what this region may produce. As yet there has been no systematic working or prospecting along the stream. It requires an expensive outfit to carry men to those diggings, and to keep them there without any other provisions or necessities than what they can carry with them; in fact, it is a dangerous task, and so far no one has attempted it. But old miners shake their heads, and say, "You'll hear from the Kuikuk yet."

The next river is the Tanana, which enters the Yukon from the south; and it will be noticed from the map that it heads up directly into the territory of the gold diggings about Forty Mile, Circle City, and Dawson. This river is navigable for steamers for one hundred and fifty or two hundred miles. The water is slack for the first two hundred miles, and after that it is very swift, with mountains on the left hand from the mouth up; on the right hand the mountains

are far off in the distance. The water is rough and swift, and the creeks entering it have glaciers at their sources. Colors of gold are found on all the creeks, but no prospects have yet been found to amount to anything; no holes have been sunk to bed-rock. Some of the creeks which enter the river on the left hand, heading up toward Forty Mile and Seventy Mile, seem to promise better results. It is curious to notice that toward Circle City, in the direction that we are now following, the creeks do not freeze in winter. The only hot springs ever found in that country are in a gulch near Circle City. One of the creeks leading into the Tanana from the Circle City district has open water about two thirds of the way up through the winter. This creek is full of ducks and geese, in spite of the temperature of 65° below zero.

The next tributary that we meet going up the river is Menook Creek. The discovery of gold was made on this creek in August, 1896, by Menook, a Russian-American half-breed Indian; but at that time the excitement in regard to the mines at Circle City was on at its topmost rush, and later on came the excitement of the findings about the Klondike, in August, 1896. So the findings of Menook were neglected until last year, when a great many miners came down to the creek after putting in their summer's work, or the required work on the claims which they had staked out in other places. It was reported at St. Michael that a camp of about one



DRAWN BY HARRY FENN.

A STREET IN DAWSON CITY.