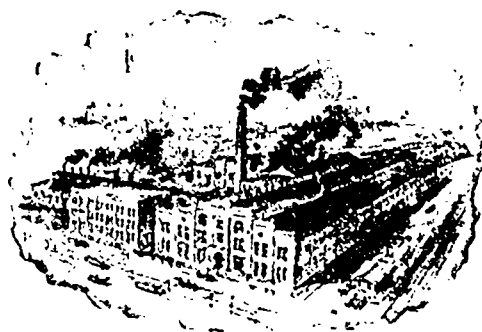


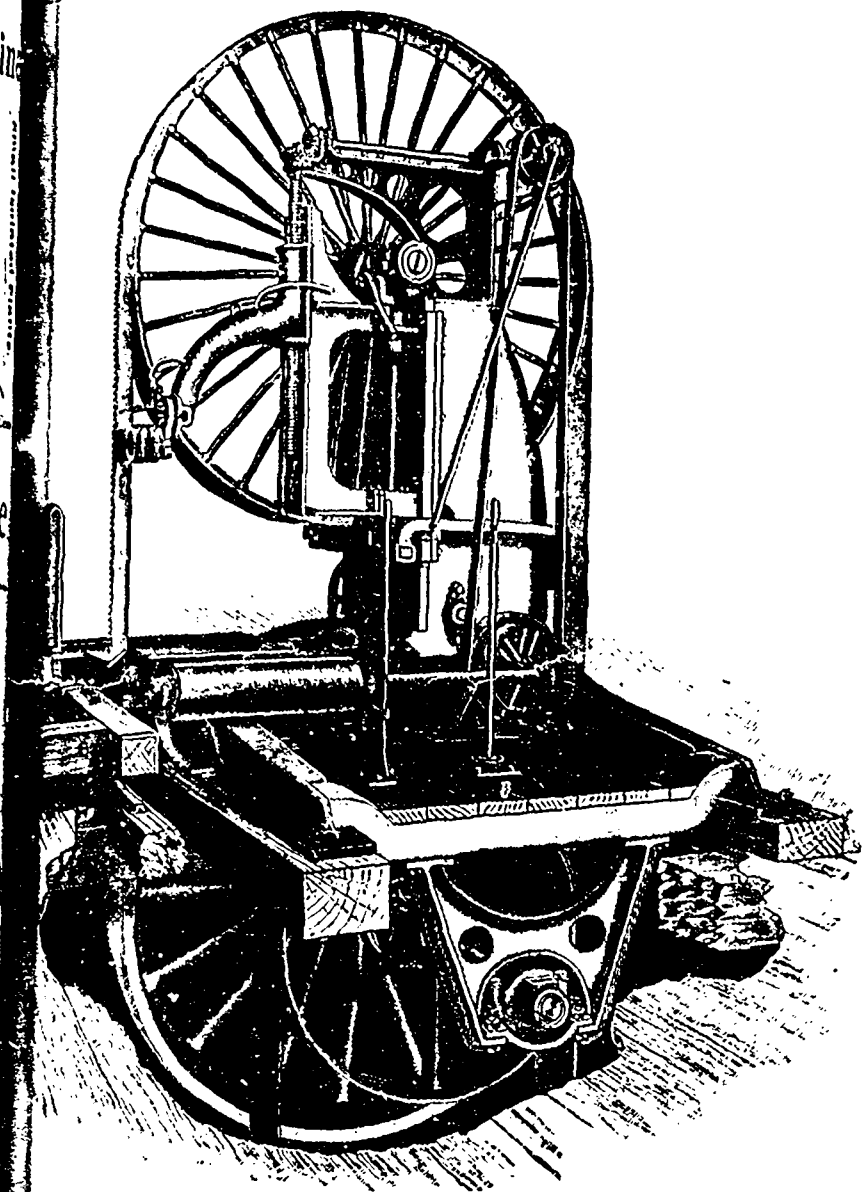
Lumber-Making Machinery - The Most Modern

1844



1898

Built in modern, well-equipped works from plans - the result of long experience by Skilled Mechanics, and an honorable record for over fifty years for Square Dealing, is your inducement to correspond with us when erecting new mills, contemplating a change or increasing your plant.



Canada's
Timber, like that of our neighbors,
is fast disappearing.

ECONOMY is the Watchword.

SAVE WHERE YOU CAN

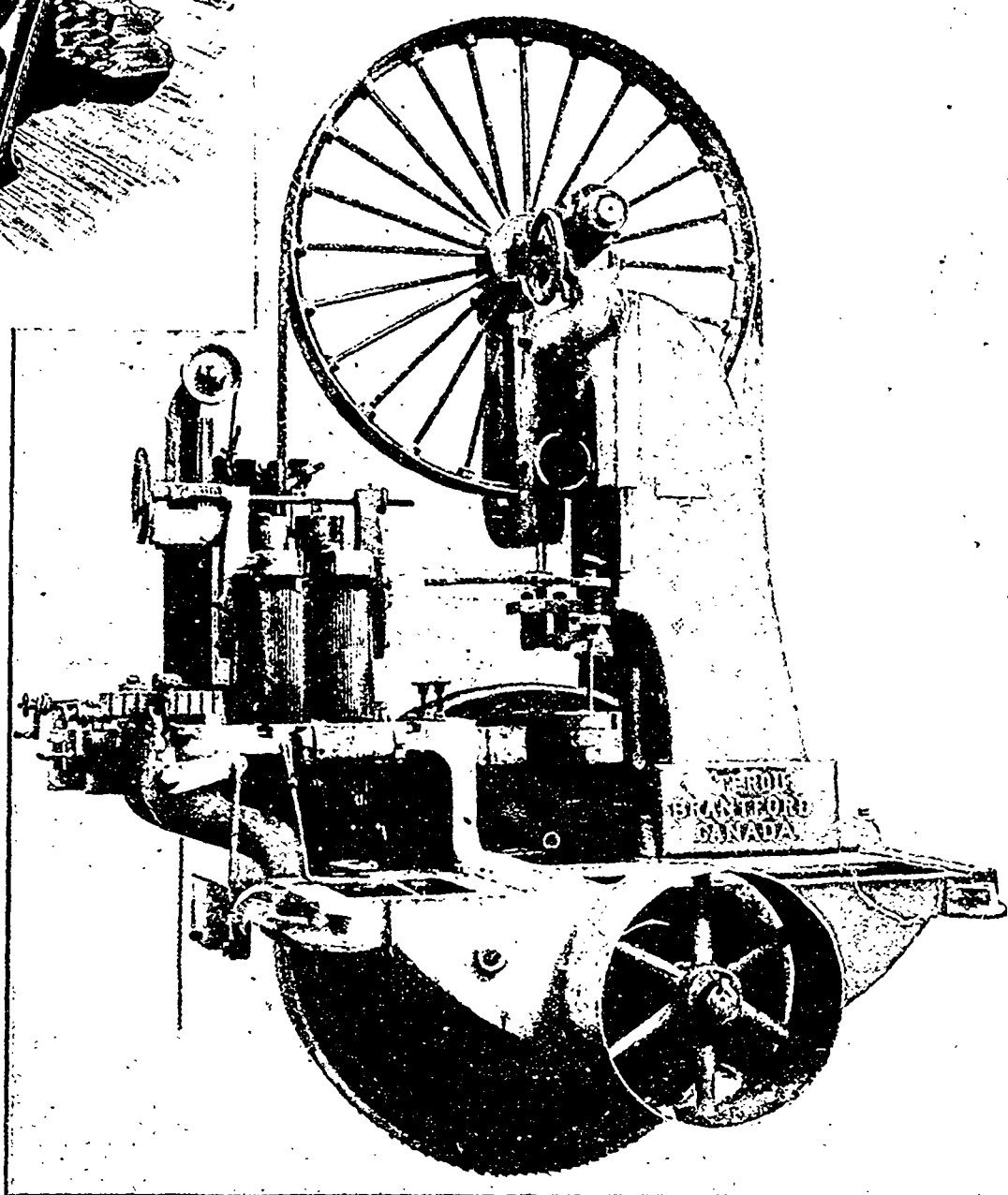
Why then hesitate to replace your wasteful six or eight gauge Circular, with its quarter or larger saw kerf, with an

"ALLIS BAND"

and its scant Eighth Kerf.

It gives you Nine Boards where you now get eight. There is no secret about a band mill; it is as easy to run as a circular, and will cost you no more per day, if you send your circular saw filer to us this winter to learn how to handle band saws. There is a further saving in wide and smoother lumber, figured by some on the whole as a saving of 15 per cent. and over. Figure what this would have been on this year's cut. Would it not have paid for the change and left a handsome margin?

Write us at once. You can make money by ordering early.



WATEROUS, BRANTFORD, CANADA †

Everything for the Saw Mill, Pulpwood or Pulp Mill.

Special Line of Log Haul-Ups and Conveyors.