

Canada Atlantic Transit Co,

OPERATING A FLEET OF LARGE STEEL STEAMSHIPS BETWEEN

Chicago, Milwaukee, Duluth, Superior and Depot Harbor, Ont.

Offering lowest rates during Season of Navigation between

New England, New York, Philadelphia, Canadian and all Eastern Points, and Chicago, Milwaukee, Duluth, Minneapolis, St. Paul, St. Louis, Kansas City, Pacific Coast and all Western Points.

Through rates east and westbound furnished on application to railroad agents of connecting lines, and by all agents of this Company. Rates and Export Bills of Lading for European Ports and Transatlantic points furnished on application.

C. J. SMITH,

GEN'L TRAFFIC MGR.

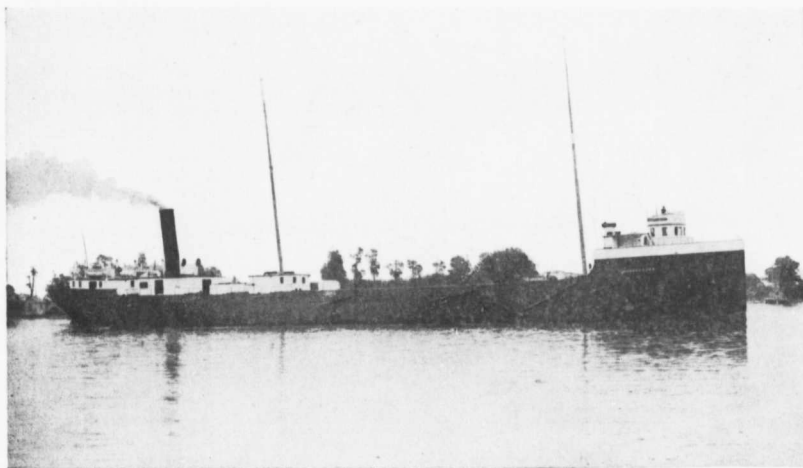
OTTAWA, CAN.

W. P. HINTON,

ASST GEN'L FRT. AGENT,

STEAMERS:

W. L. BROWN, Capacity, - 8,000 tons.	KEARSARGE, Capacity, - 4,500 tons.
ARTHUR ORR, " - 4,800 "	GEO. N. ORR, " - 4,200 "
OTTAWA, Capacity, - - 3,500 tons.	



STEAMER "GEORGE ORR."

Principal Agencies,



BOSTON, Mass.

Jas. Ritchie, Gen. East Agt
196 Washington St.

NEW YORK, N.Y.

H. S. Heydon, Agent,
93 Wall St.

PHILADELPHIA, Pa.

Wm. P. Clyde, & Sons, Agts

MONTREAL, Que.

M. A. Overend, For. Fl. Agt
H. B. Mussen, Con. Agt.
26 St. Sacrement St.

OTTAWA, Ont.

R. K. Claire, Gen. Agent.

R. A. Carter, Trav. Agent.

CHICAGO, Ill.

G. J. Harris,

Gen. Western Agent,
4 Sherman St.

MILWAUKEE, Wis.

C. D. Howard, Agent,
262 So. Water St.

DULUTH, Minn.

J. T. Rose, N. W. Agent,
Chamber Commerce.

MINNEAPOLIS, Minn.

H. L. Moore, Agent,
Grain Exchange

ST. PAUL, Minn.

W. H. Burk, Agent,
183 So. Third St.

ST. LOUIS, Mo.

L. D. Gruber, Agent,
201 Houser Building.