

**JOHNSTON'S FLUID BEEF** is being adopted in the BRITISH, French, U. S., and Austrian Naval, Military and General hospitals. It is prescribed by the Queen's physician and by every medical man who has tested its merits. It is the only essence known which contains all the nutritive constituents of beef, and is pronounced by scientific men everywhere to be the most perfect food for invalids ever introduced. Sold by Druggists and Grocers, 3s., 6s., and £1.00.

25 FANCY CARDS with Names 10c. Plain or Gold. Agents: Outfit 10c. 170 Styles. Hall & Co., Hudson, N.Y.

**J. K. MACDONALD,**

BLACKSMITH, BELL HANGER, LOCK SMITH &c., 24 LaTour Street, Montreal.

REPAIRS PROMPTLY ATTENDED TO.

17-20-51-354.

**THE Canadian Spectator,**

A High-class Weekly Journal,

EDITED BY THE

Reverend A. J. BRAY.

SUBSCRIPTION: \$2.00 PER ANNUM.

OFFICES: 162 St. James Street, Montreal, and 4 Toronto Street, Toronto.

**THE MILTON LEAGUE.**

"Give me the liberty to know, to think, to believe, and to utter freely, according to conscience, above all liberties.—Milton."

**PUBLICATIONS:**

- BRAY, REV. ALFRED J. The Churches of Christendom, cloth. \$1.00
- BROWN, REV. J. BALDWIN. The Doctrine of Annihilation in the Light of the Gospel of Love. 50
- DALE, REV. E. W. Protestantism: Its Ultimate Principle. 60
- The Ten Commandments. 60
- DAWSON, GEO. M.A. Prayers, and a Discourse on Prayer. 50
- McLEOD, NORMAN, D.D. Scotch Fables. 15
- TIPPLE, Rev. S. A. Echoes of Spoken Words. 50

Here is a new wave of literature, and of the deep and wide sea of religious thought, but sparkling and bright and gratefully refreshing.—Literary World.

**GOVERNMENT RAILWAY.**



**WESTERN DIVISION Q. M. O. and O. RAILWAY.**

Shortest and Most DIRECT ROUTE to OTTAWA. Until further notice, Trains will leave Hochelaga Depot as follows:

	A.M.	P.M.
Express Trains for Hull at	9:30 and 5:00	
Arrive at Hull at	2:00 p.m.	9:15
Express Trains from Hull at	9:10	4:45
Arrive at Hochelaga at	1:40 p.m.	9:00
Trains for St. Jerome at		4:30 p.m.
Trains from St. Jerome at	7:20 a.m.	

Trains leave Mile End Station ten minutes later. GENERAL OFFICES—111 Place d'Armes Square. TICKET OFFICE—20 St. James Street.

**C. A. STARK C. A. SCOTT.**

Gen. Freight and Pass. Agent. Gen. Superintendent.

**GRAY'S SPECIFIC MEDICINE.**

TRADE MARK. The Great English Remedy will promptly and radically cure any and every case of Nervous Debility and Weakness, result of Indiscretion, excess or overwork of the brain and nervous system; is perfectly harmless, acts like a magic, and has been extensively used for over thirty years with great success.

Before Taking. After Taking.

Full particulars in our pamphlet, which we desire to send free by mail to every one. The Specific Medicine is sold by all druggists at \$1 per package, or six packages for \$5, or will be sent free on receipt of the money by addressing

**THE GRAY MEDICINE CO.,**  
WINDSOR, ONT.

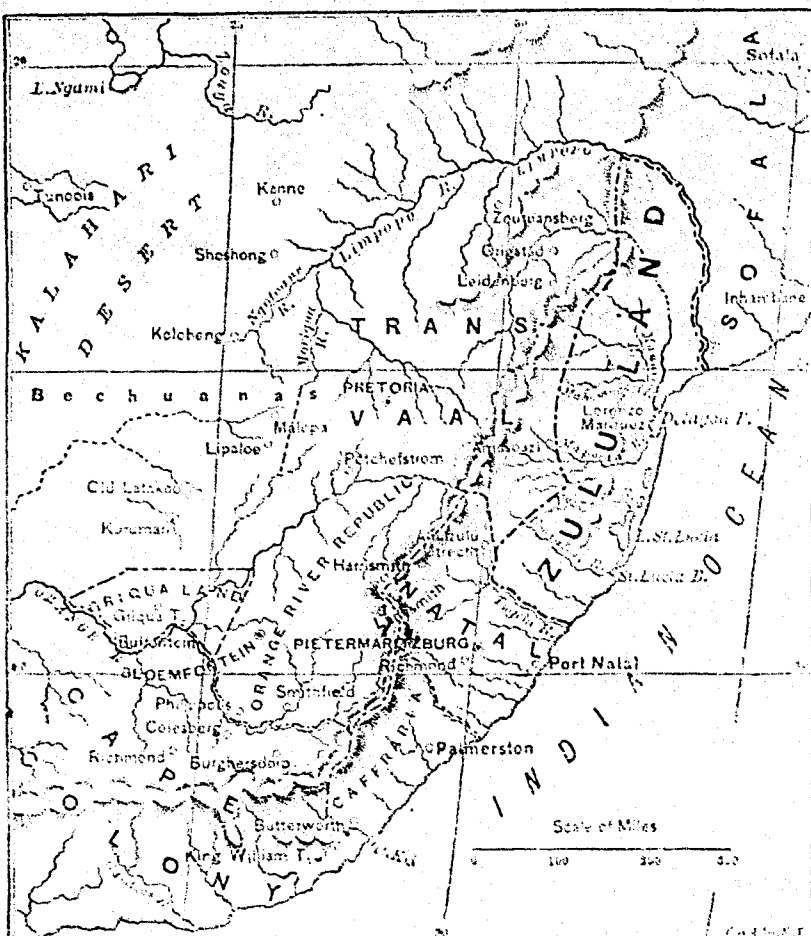
Sold in Montreal by all Wholesale and Retail Druggists, and everywhere in Canada and United States.

60 Chromo and Perfumed Cards (20 1/2 x 1 1/2). Names in Gold and Jet, 10 cents. CLINTS BROS., Chathamville, Ct.

25 Beautiful all Chromo Cards, 10c. or 65 Snowflake, Rep. Damaak, assorted 10c. (large size). Agent's Outfit 10c. Send Canada \$, 1 and 2c P.O. Stamps in payment. L. C. COE & CO., BRISTOL CO. K.

**Gray's SYRUP OF RED SPRUCE GUM**

Sold by ALL DRUGGISTS FOR COUGHS AND COLDS



ZULULAND, SOUTH EASTERN AFRICA

**THE BEST REMEDY FOR INDIGESTION.**

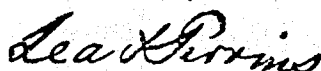


CAMOMILE PILLS are confidently recommended as a simple Remedy for Indigestion, which is the cause of nearly all the diseases to which we are subject, being a medicine so uniformly grateful and beneficial, that it is with justice called the "Natural Strengtheners of the Human Stomach." "Norton's Pills" act as a powerful tonic and gentle aperient, are mild in their operation, safe under any circumstances, and thousands of persons can now bear testimony to the benefits to be derived from their use, as they have been a never-failing Family Friend for upwards of 45 years. Sold in Bottles at 1s. 1/2d., 2s. 9d., and 11s. each, by all Medicine Vendors throughout the World.

**CAUTION.**

Be sure and ask for "NORTON'S PILLS," and do not be persuaded to purchase an imitation.

In consequence of spurious imitations of  
**LEA AND PERRINS' SAUCE,**  
which are calculated to deceive the Public, Lea and Perrins have adopted A NEW LABEL, bearing their Signature, thus,



which is placed on every bottle of WORCESTERSHIRE SAUCE, and without which none is genuine. Ask for LEA & PERRINS' Sauce, and see Name on Wrapper, Label, Bottle and Stopper. Wholesale and for Export by the Proprietors, Worcester; Crasse and Blackwell, London, &c., &c.; and by Grocers and Oilmen throughout the World.

To be obtained of MESSRS. J. M. DOUGLASS & CO., MONTREAL; MESSRS. URQUHART & CO., MONTREAL.

CARDS—10 of the Valley, 10 Scroll, 10 Engraved, 10 Transparent, 1 Model Love Letter, 1 Card Case, name on all, post-paid, 15c. 4 packs 50c. WARD & O. NORTHFORD, CONN.

**WANTED A GOOD MAN FOR** every State to sell our goods by sample. Fair Salary paid. References required. LA BELLE MANUFACTURING CO., 93 Clark Street, Chicago, Ill.

**PROFESSED COOKS** are sure that you will never be disappointed if you order the DURHAM brand, it is much superior to all other preparations.

**GREAT CLEARNESS OF COLOR** is a noted feature in this preparation, while so perfect is the purifying process to which it is subjected that it far exceeds other makes in its low SPECIFIC GRAVITY and absolute purity.

**IF THERE ARE ANY LADIES** who have not used the DURHAM CORN FLOUR they are respectfully requested to give it a trial and carefully follow out the directions printed on every package, and if this is done they will say as do all connoisseurs.

"It is the finest they ever used."

When you ask for DURHAM CORN FLOUR, see that you get it.

**WILLIAM JOHNSON,**  
28 St. Francois Xavier St., Montreal.  
Sole Agent for United States and Canada.

\$10 to \$1000 invested in Wall St. Stocks makes fortunes every month. Book sent free explaining everything. Address BAXTER & CO., Bankers, 17 Wall St., N. Y.

**ROBERT MILLER,**  
Publisher, Book-Binder, Manufacturing and WHOLESALE STATIONER,  
IMPORTER OF Wall Papers, Window Shades and SCHOOL BOOKS,  
397, NOTRE-DAME STREET, MONTREAL.

50 Pictures, Snowflake, Chromo, Motto Cards, name in gold & jet, 10c. G. A. SPRING, E. Wallingford, C.

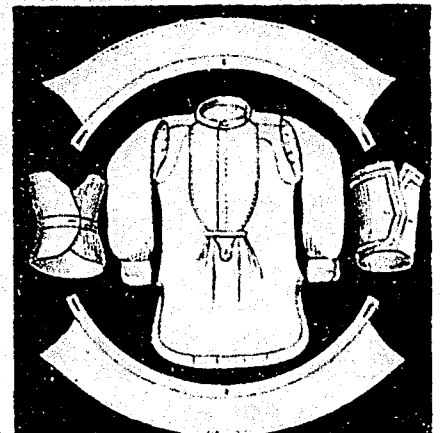
**JUST PUBLISHED**  
**CHISHOLM'S ALL-ROUND ROUTE AND PANORAMIC GUIDE OF THE ST. LAWRENCE,**  
With corrections to date. It contains full descriptions of the points of interest on the "All Round Route," including Hudson River, Trenton and Niagara Falls, Toronto, Ottawa, Montreal, Quebec, Saguenay River, White Mountains, Portland, Boston, New York. It is profusely illustrated, and is furnished with maps of the Route, and a fine panoramic view of the St. Lawrence River. For sale by booksellers and news agents. Sent post-paid to any address on receipt of the price, 50 cts.

**G. R. CHISHOLM & BROS.,**  
179 Boulevard street, Montreal.

**WILLIAM DOW & CO. BREWERS and MALTSTERS**  
MONTREAL.



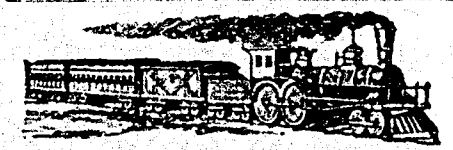
Superior Pale and Brown Malt. India Pale, and other Ales. Extra Double and Single Stout in Wood and Bottle. Shipping orders promptly executed. Families supplied. 18-6-52-22



**S. J. BAKER & CO.**  
SHIRT MAKERS & HABERDASHERS.  
Self-measurement Card and Samples of Colored Regatta Shirts sent free by mail. Large stock of Underwear, Ties, Dent's Gloves, &c., always on hand.  
138 ST. JAMES STREET,  
Opposite St. Lawrence Hall,  
MONTREAL.

**E. N. FRESHMAN & BROS.**  
Advertising Agents,  
186 W. Fourth St., CINCINNATI, O.  
Are authorized to receive advertisements for this paper. Estimates furnished free upon application.  
Send two stamps for our Advertisers' Manual.

**JOHN MCARTHUR & SON**  
OIL, LEAD, PAINT,  
COLOR & VARNISH MERCHANTS  
IMPORTERS OF English and Belgian Window Glass, Rolled, Rough and Polished Plate Glass, Colored, Plain and St. ned Enamelled Sheet Glass.  
PAINTERS' & ARTISTS' MATERIALS, BRUSHES, CHEMICALS, DYE, STUFFS, NAVAL STORES, &c.  
310, 312, 314 & 316 ST. PAUL ST.,  
AND  
255 & 257 COMMISSIONERS ST  
MONTREAL.  
26-17-59 308



**INTERCOLONIAL RAILWAY.**  
1878-79.  
Winter Arrangements.

EXPRESS PASSENGER TRAINS run DAILY except Sundays as follows—

Leave Point Levee	5:00 A.M.
" River in Loup	2:00 P.M.
(Arrive Trois Pistoles (Dinner)	3:00 "
" Rimonski	4:49 "
" Campbellton (Supper)	10:00 "
" Dalhousie	10:21 "
" Bathurst	12:2 A.M.
" Newmarket	2:10 "
" Moncton	2:00 "
" St. John	9:13 "
" Halifax	1:30 P.M.

Pullman Cars on Express Trains. These Trains connect at Point Levee with the Grand Trunk Trains leaving Montreal at 9:45 o'clock p.m. Pullman Car leaving Point Levee on Tuesday, Thursday and Saturday, runs through to Halifax, and on Monday, Wednesday and Friday to St. John. For information in regard to passenger fares, tickets, rates of freight, train arrangements, &c., apply to

**G. W. ROBINSON,**  
Agent,  
177 St. James Street  
**C. J. BRIDGES,**  
General Supt. of Gov't Ry's  
Montreal, 18th Nov., 1878.

The Canadian Illustrated News is printed and published by the HERLAND-DESHARATS LITHOGRAPHIC COMPANY (LIMITED), at its offices, Nos. 5 and 7 Bleury Street, Montreal.