

—Buildings at Iroquois, Ont., owned by T. Johnston, G. E. McKnight, T. Colter and E. McNulty.—Residence of W. D. Smith at Tilbury, Ont., totally destroyed.

CONTRACTS AWARDED.

NEPAWA, MAN.—Brick school building: Jones & Fusce, successful tenderers, at \$5,135.

OTTAWA EAST, ONT.—New separate school: Low Bros., of Ottawa, contractors, cost about \$4,000.

ST. MAGDELINE, QUE.—New school house: Seguin & Limoges, of Ottawa, contractors, price \$12,000.

HULL, QUE.—Three storey brick tenement building for Mrs. D. Casey; Christie Lynott, contractor, cost \$3,000.

SHERBROOKE, QUE.—Nurses' Home at Protestant Hospital: D. G. Loomis & Sons, contractors; price \$3,850.

LONDON, ONT.—The following contracts for new Grand Opera House have been let: Mason and brickwork, A. Burrett &

Sons; carpenter work, John Purdom. Col. Wood, of Chicago, is architect.

GRAND VALLEY, ONT.—Brick block of three stores for Dr. Hopkins: Brick work, plastering, etc., F. Graham; carpentry,

William Watts.—Brick residence for Dr. Perkins: McDorland Bros., of Orangeville, contractors.

BROCKVILLE, ONT.—It is said that the (Continued on page 6.)

JOSSON CEMENT ..Manufactured at.. NIEL ON RUPELL

Is the Highest Grade Artificial Portland Cement and the Best for High Class Work. Has been used largely for Government and Municipal Works.

TO BE HAD FROM ALL CANADIAN DEALERS

C. I. de Sola. Manager in Canada :: 180 St. James Street, MONTREAL

PORTLAND CEMENT

Samson Brand

Magnet Brand

MADE AT SHALLOW LAKE, ONTARIO

Our celebrated SAMSON BRAND has been before the public for many years, and has made hosts of friends among Contractors and Municipal Corporations until it has become one of the leading Cements on the market today, being excelled by none. This year we have decided to place the MAGNET on the market, and respectfully ask consumers to give it a trial. It will, we think, do its own advertising.

Correspondence invited.

GEO. S. KILBOURN, Secretary-Treasurer.

WORKS: Shallow Lake, Ont.

HEAD OFFICE: Owen Sound, Ont.

CEMENT—

SAYLOR'S PORTLAND.

Best Imported.

For Side-Walks

and Bridge Work.

Write to

JOHN MANN & SONS,

WESTERN AGENTS.

LONDON, CANADA

M. BEATTY & SONS

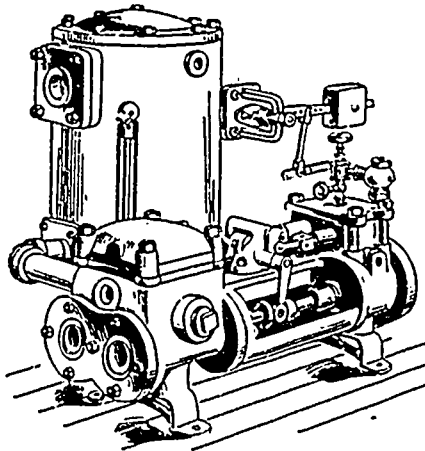
WELLAND, ONT.

Dredges, Ditchers, Derricks and
Steam Shovels

of various styles and sizes to suit
any work.

Submarine Rock Drilling Machinery, Hoisting Engines, Suspension Cableways, Horse-Power Hoisters, Gang Stone Saws, Centrifugal Pumps for Water, Sand and Gold Mining, and other Contractors' Plant.

THE NORTHEY AUTOMATIC FEED PUMP AND RECEIVER



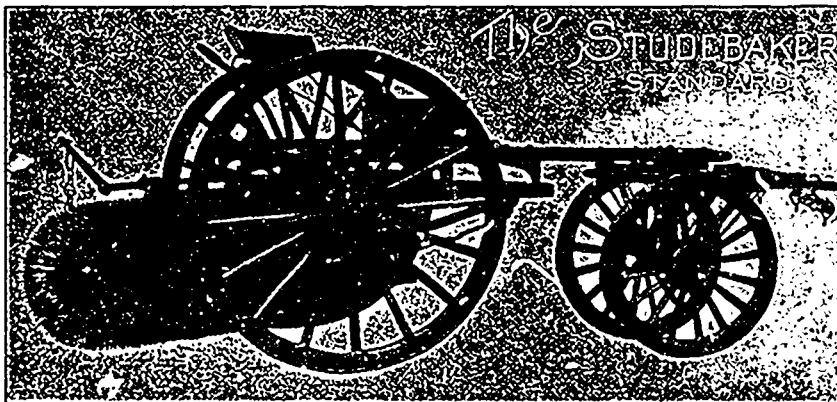
The most successful device in the market for returning water of condensation from pipes and coils of steam-heating systems at the highest possible temperature to the boilers. By keeping the pipes clear for the steam it ensures a quickly operated, noiseless, regular heating service. Takes up little room. A favorite with prominent Engineers and Architects.

Send for New Free Pump Catalogue, containing designs of Pumps for every conceivable duty. Should be in the hands of every Architect and Engineer.

The Northey Co.
Limited

TORONTO

1015 King Street, Subway.



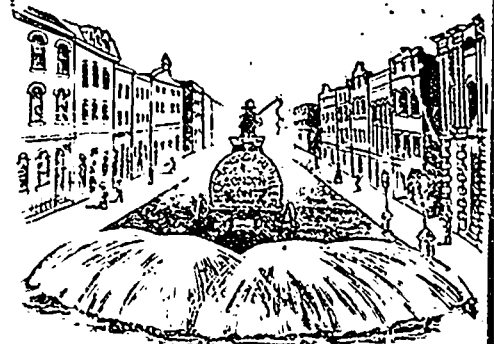
Stacy's

Patent Improved

Street Sweeping Machine

Is the Standard
of Perfection.

Because no sweeper so effectually does the work for which it is designed as "The Studebaker." It Sweeps Clean. No sweeper is constructed with the same degree of care and mechanical precision. It Wears Well. "The Studebaker" has the smallest possible number of working parts, and has less gearing than any other sweeper made. It is free from unnecessary complications. With reasonable care it will not get out of order. Send for complete descriptive catalogue.



Studebaker Sprinkler

(PATENT IMPROVED.)

Does not clog or get out of order. Greatest width of spray
Can be graded from driver's seat to any volume.

We also make an

IMPROVED VERTICAL SPRAY

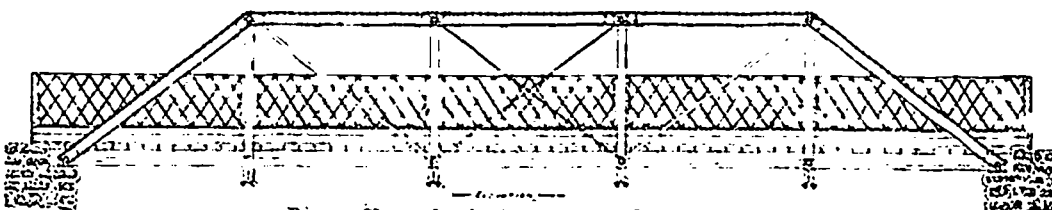
for Pavement

Geo. Heaman, Mnfr., London, Ont.

THE HAMILTON BRIDGE WORKS CO., LIMITED, HAMILTON, CANADA

Manufacturers of . . .

STEEL RAILWAY AND HIGHWAY BRIDGES



Beams, Channels, Angles and Tees always in Stock

Steel Roofs
and Every Description of
Steel Lattice
and Girder Work

Estimates Furnished
on application.