

CHESS.

All communications for this department should be addressed—**CHESS EDITOR,** Windsor, N. S.

The proprietors of THE CRITIC offer two prizes—to consist of books on Chess—to those subscribers who shall send in the greatest number of correct solutions during the current year. No entrance fee required.

TO CORRESPONDENTS.

A BOODLER.—Your communications received. Thanks. This is a case where the correspondent and C. E. are at a mutual disadvantage through the use of a "nom de plume" only.

By an oversight Problem 47 was printed without its conditions, viz., white to play and mate in 2 moves. Please excuse. C. E.

At least two full solutions must be sent in for 3 movers.

Solution to No. 45.—K to K8.

Solution to No. 46.

1 R to KB7 1 K to B4

2 R to B5 ch, &c.

If 1 K to Q6

3 R to Q7 ch, &c.

If 1 K to K4

2 Kt to Kt6 &c.

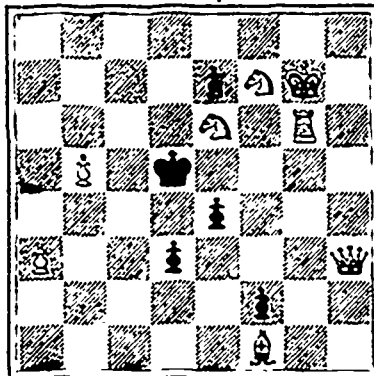
Correct solutions to No. 45 received from Mrs. H. Moseley, "A Boodler," W. J. Calder, J. W. Wallace.

To No. 46 from Mrs. H. Moseley, J. W. Wallace.

Hackney Mercury (joint composition.)

PROBLEM No. 48.

BLACK—5 pieces.



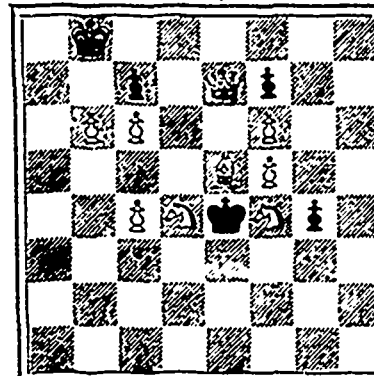
WHITE—8 pieces.

White to play and mate in 2 moves.

"English Mechanic."

PROBLEM No. 49.

BLACK—4 pieces.



WHITE—10 pieces.

White to play and mate in 3 moves.

GAME No. 36.

FRENCH DEFENCE.

WHITE.

BLACK.

ZUKERTORT.

LEE.

1 P to K4

P to K3

2 P to Q4

P to Q4

3 Kt to QB3

Kt to KB3

4 B to Q3

P takes P

5 Kt takes P

Kt to B3

6 Kt to KB3

B to K2

7 F to B3
8 Castles
9 R to K sq
10 B takes Kt
11 Q to B2
12 P to KKt4
13 B to B4
14 Kt to K5
15 P takes B
16 B to R6
17 B takes R
18 K to Rsq
19 P to QB4
20 R to KKt sq
21 QR to Q sq
22 QR to K sq
23 Q to B3
24 B to B3
25 B takes Q
26 R to Q sq
27 B to B3
28 R to Kt sq
29 R takes QKtP
30 B to Kt2
31 R to Q sq
32 R to Q6
33 P to KR4
34 R takes RP
35 R to B7
36 P takes P
37 B to K4
38 B to Kt7
39 R to Kt6
40 R to B5
41 R takes QBP
42 K to Kt sq
43 P to R4
44 R (B4) to Kt4
45 R to B4
46 R to B5
47 R to B3
48 R to B4
49 R takes B
50 Q (R4) to Kt4
51 B takes Kt
52 B takes P

B to Q2
Castles
Kt takes Kt
B to B3
P to KKt3
R to Kt sq
Kt to K2
B takes Kt
Kt to Q4
Q to R5
Q takes P ch
R takes B
Kt to B5
Q to R4
B to B sq
R to Q sq
Kt to K7
Kt takes Q
Kt to R5
B to Q2
Kt takes P
Kt takes P
Kt takes P
P to QB4
P to B5
P to KKt4
P to KR3
K to B sq
K to K sq
P takes P
P to B4
R to Kt sq
K to Q sq
Kt to Q6
Kt takes P ch
Kt to Q6
Kt to K4
Kt to Q6
Kt to K4
Kt to Q6
Kt to K4
Kt to Q6
Kt to B5
B takes P
K to B2
Kt to Q4
R takes R
Drawn game.

12, 13, 15, 20; white men 17, 19, 22, 23, 24, 25, 26, 27; black to play and win.
7—11 11—16 15—18 31—26
25 21 10 6 22 6 2 6
10—14 1—10 13—31 26—22
17 10 21 17 6 2 b. wins.

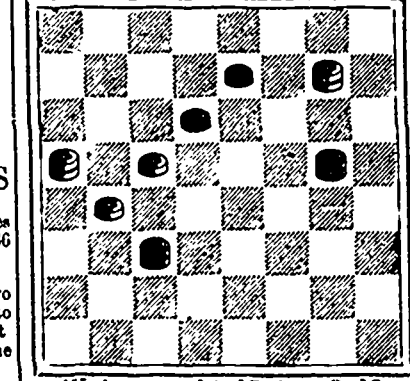
PROBLEM 66.—The following exceedingly neat and pretty solution was sent us both by T. B. L. and by "Dixie." The position was:—black men 2, 3, 6, kg. 30; white men 12, 13, 22, kg. 11, black to play and win.
6—10 2—6 30—25 25—21
22 17 11 7 7 14 b. wins.

PROBLEM 69.—Correctly solved by T. B. L., S. C. H. and "Dixie." The position was:—black men 6, 7, 8, 12; white men 16, 17, 19, 22; white to play and draw.
22 18 17 14 18 15 15 10
8—11 11—20 20—24 drawn.

PROBLEM 70.—Solved by no one. The position was:—black men 3, 14, 17, kg. 31; white men 10, 21 25, kg. 23; black to play and draw.
3—8 (b)11—15 18—27 22—29
10 7 2 6 9 18
(*)8—11 15—18 17—22 drawn.
(1)7 2 6 9 18 23
(a) 8—12 loses. (b) 11—16 loses.

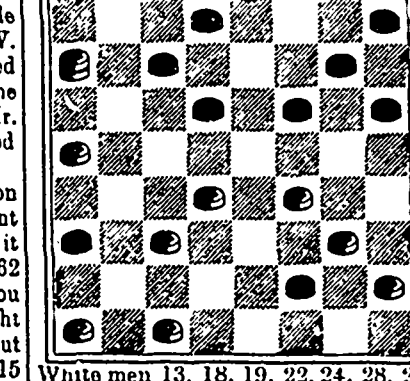
VAR. I.
23—19 21—14 19—26
14 18 18 23 31 29 drawn.

PROBLEM 72.
By Dr. Truax, Champion of Minnesota
Black men 7, 10, kgs 16, 22.



White men 14, 17, kgs. 8, 13.
White to move and black to draw.
How many will solve the doctor's little gem?

PROBLEM No. 73.
By D. Wickwire, Shubenacadie.
Black men 2, 4, 6, 8, 10, 11, 12, 21, 27.



White men 13, 18, 19, 22, 24, 28, 29, 30, kg. 5.

White to move and win.
We believe in encouraging home industry and would be pleased to see a round dozen solve this problem.

Blank forms, (suitable for both Chess and Checkers), for copying down problems, positions, endings, etc. Fifty for 25c., post free. Small sheets, numbered, and with appropriate headings, for recording games. Twenty-five for 15c.
For sale at CRITIC Office, Halifax.

DRAUGHTS-CHECKERS

All Checker communications and exchanges should be addressed to W. Forsyth, 36 Grafton Street, Halifax.

The proprietors of THE CRITIC offer two prizes—to consist of books on Checkers—to those subscribers who shall send in the greatest number of correct solutions during the current year. No entrance fee required.

TO CORRESPONDENTS.

T. B. L., Shubenacadie.—Glad to hear again from you and would like to receive your contributions oftener. Your solutions to 62 and 66 are first-class, and yours is the only correct solution to the former that we have received. This is the more creditable to you as the author, Mr. C. W. Parrow, whose solution we corrected last week, holds the gold medal of the New England Checker Club. Mr. D. Wickwire's problem is very good and we will use it.

S. C. H., Yarmouth.—Your solution to No. 64 is certainly an improvement on the author's, and we will give it next week. You failed both in 62 and 66. But in the former you deserve the credit of seeing the right way though you did not work it out correctly. You finish the play with 15—18, 10 15, 26—31. If instead of this last move black had gone 26—23 he would win.

SOLVERS will confer a favor by writing their solutions in four columns as we print them.

SOLUTIONS.

PROBLEM 65.—Correctly solved by S. C. H. only. The position was as follows:—black men 1, 3, 7, 10,



Sault Ste. Marie Canal.

NOTICE TO CONTRACTORS

SEALED TENDERS addressed to the undersigned, and endorsed "Tenders for the Sault Ste. Marie Canal," will be received at this office until the arrival of the eastern and western mails on **TUESDAY**, the 23rd day of October, next, for the formation and construction of a Canal on the Canadian side of the river, through the Island of St. Mary.

The works will be let in two sections, one of which will embrace the formation of the Canal through the island; the construction of locks, etc. The other, the deepening and widening of the channel-way at both ends of the canal; construction of piers, etc.

A map of the locality, together with plans and specifications of the works, can be seen at this office on and after **TUESDAY**, the 9th day of October, next, where printed forms of tender can also be obtained. A like class of information, relative to the works, can be seen at the office of the Local Officer in the Town of Sault Ste. Marie, Ont.

Intending contractors are requested to bear in mind that tenders will not be considered unless made strictly in accordance with the printed forms and be accompanied by a letter stating that the person or persons tendering have carefully examined the locality and the nature of the material found in the trial pits.

In the case of firms, there must be attached the actual signatures of the full name, the nature of the occupation and residence of each member of the same; and further, a **BANK DEPOSIT RECEIPT** for the sum of \$20,000 must accompany the tender for the canal and locks; and a **BANK DEPOSIT RECEIPT** for the sum of \$7,500 must accompany the tender for the deepening and widening of the channel-ways at both ends, piers, etc.

The respective **DEPOSIT RECEIPTS**—cheques will not be accepted—must be endorsed over to the Minister of Railways and Canals, and will be forfeited if the party tendering declines entering into contract for the works, at the rates and on the terms stated in the offer submitted.

The deposit receipt thus sent in will be returned to the respective parties whose tenders are not accepted.

This Department does not, however, bind itself to accept the lowest or any tender.
By order, **A. P. BRADLEY,** Secretary.

Department of Railways and Canals,
Ottawa, 8th August, 1888.



SAULT STE. MARIE CANAL.

NOTICE TO CONTRACTORS.

The works for the construction of the canal, above mentioned, advertised to be let on the 23rd of October next, are unavoidably postponed to the following dates.

Tenders will be received until **Wednesday, the 7th day of November next.**

Plans and specifications will be ready for examination at this office and at Sault Ste. Marie on and after

Wednesday, the 24th day of October next.

By order, **A. P. BRADLEY,** Secretary.
Department of Railways and Canals,
Ottawa, 27th September, 1888.

NOTICE.

Now ready for inspection at **DeWolfe's Show Rooms.**
The largest assortment of

CARRIAGES
Yet offered.

A FEW of those **SEVENTY-FIVE DOLLAR** ones left.

CALL AND SEE AT **DeWolfe's Carriage Factory**
NORTH WEST COMMON, HALIFAX.

Printed by Halifax Printing Co's
161 Hollis Street, Halifax, N. S.