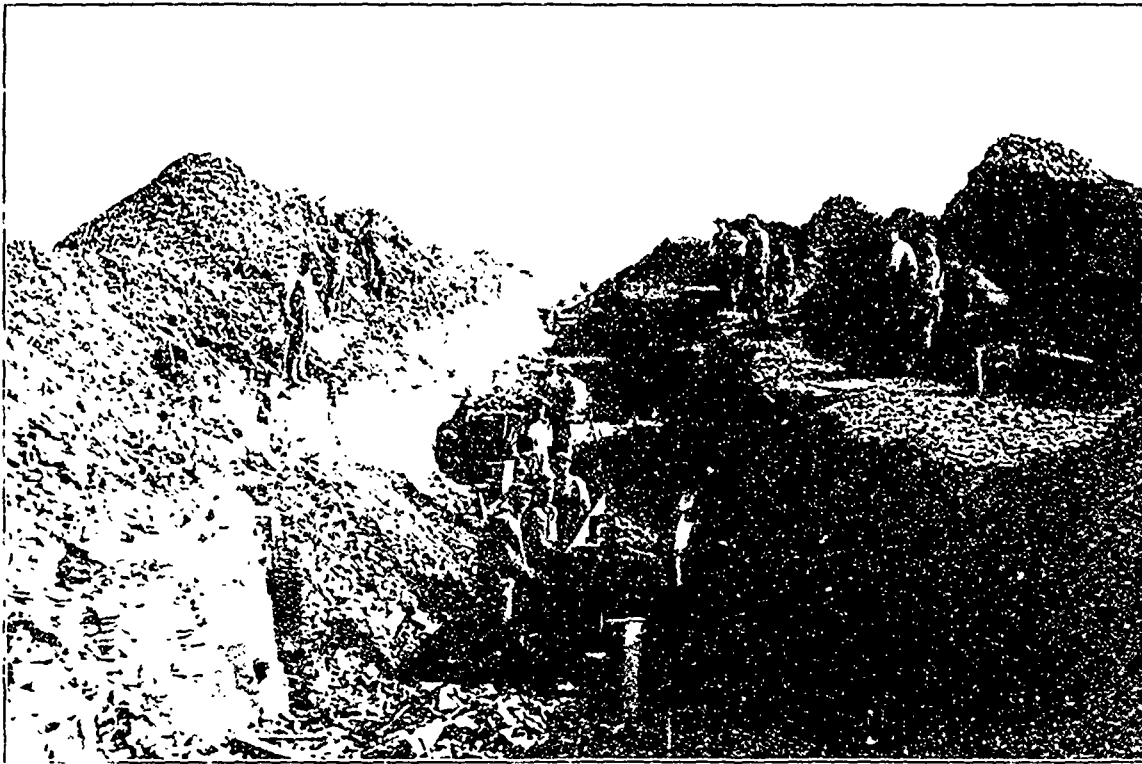
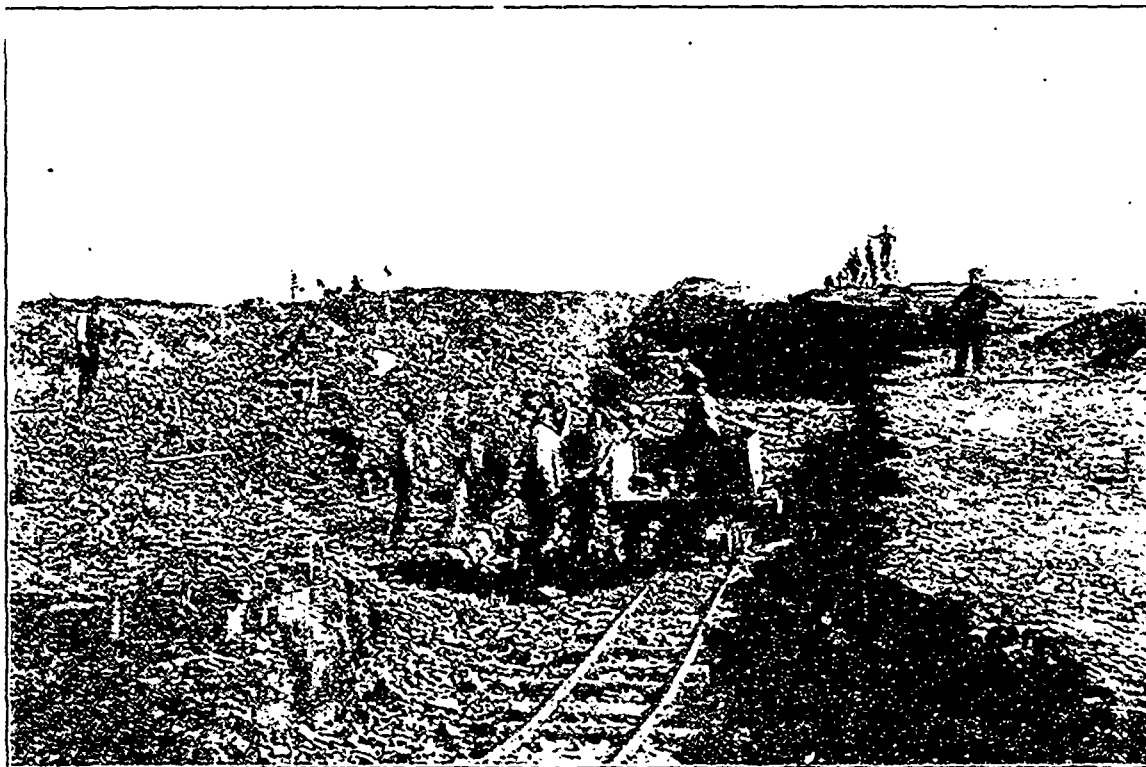


VISIT OF THE AMERICAN INSTITUTE OF MINING ENGINEERS.



Great Open Cut on Seam about 18 feet thick worked by Dominion Iron and Steel Company at Bell Island, Newfoundland.



Mining Operations of the Nova Scotia Steel Company, Limited, on their great Red Hematite deposits, Bell Island, Newfoundland.