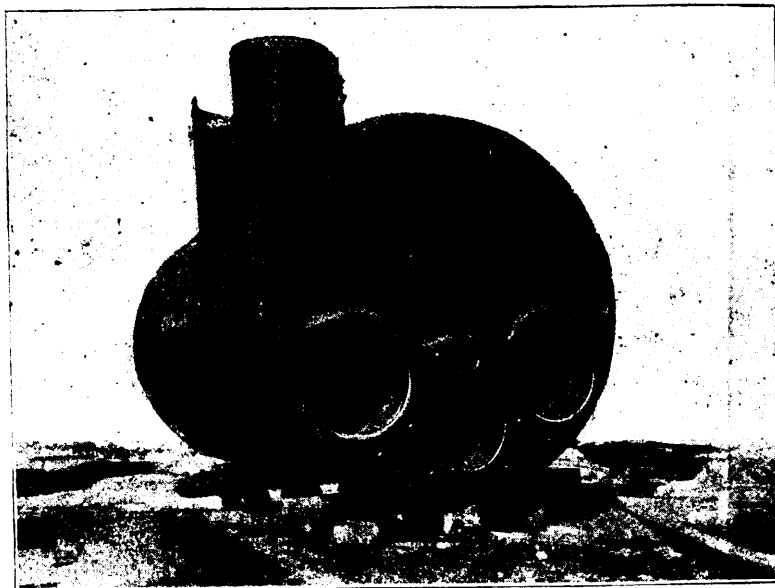


BOILERS FOR ALL SERVICES

Return Tubular
Lancashire
Marine



Locomotive
"Caldwell"
(Water Tube)
Cornish, etc.

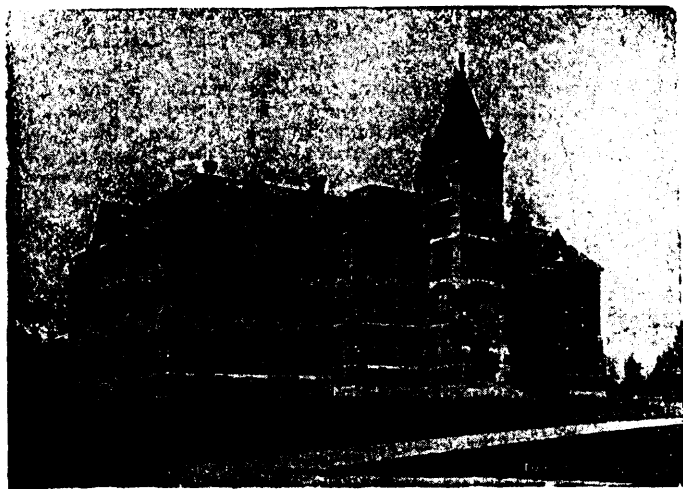
One of two marine boilers built in our shops for the Richelieu & Ontario Navigation Co.'s Steamer "Carolina."
Length 21 feet, diameter 13 ft. 4 in., height 11 ft. 10 in., 126 4½-in. tubes, weight 37½ tons.

The John McDougall Caledonian Iron Works Co. Ltd.
MONTREAL

SCHOOL OF PRACTICAL SCIENCE, TORONTO

ESTABLISHED 1878.

THE FACULTY OF APPLIED SCIENCE AND ENGINEERING OF THE
UNIVERSITY OF TORONTO.



DEPARTMENTS OF INSTRUCTION :

- 1—CIVIL ENGINEERING
- 2—MINING ENGINEERING
- 3—MECHANICAL & ELECTRICAL ENGINEERING
- 4—ARCHITECTURE

Special Attention is directed to the Facilities possessed by the School for giving Instruction in Mining Engineering.

LABORATORIES.

- | | | |
|------------|---------------|----------------|
| 1—CHEMICAL | 3—MILLING AND | 5—METROLOGICAL |
| 2—ASSAYING | ORE TREATMENT | 6—ELECTRICAL |
| | 4—STEAM | 7—TESTING |

A Calendar giving full information, and including a list showing the positions held by graduates, sent on application.

A. T. LAING, Registrar.