

THE Equity Fire Insurance Company OF CANADA

Condition on December 31st, 1913

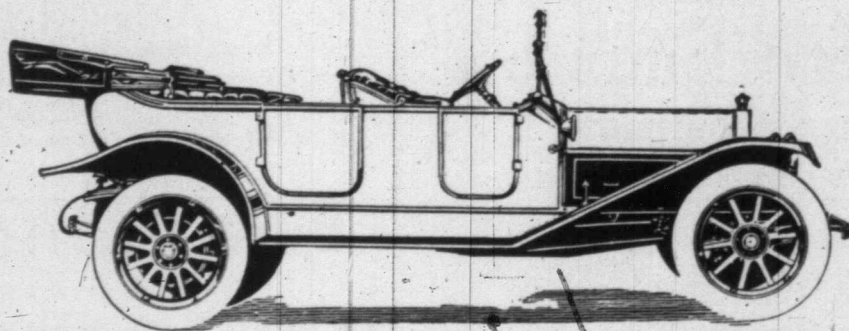
ASSETS

Cash on Hand and in Bank	- \$61,751.01
Bonds, Debentures and Mortgages	- - - 116,936.12
Net Premiums under collection	32,601.21
Sundry assets, including Office Furniture, Goad's Plans, Reinsurance due Company, etc.	- - - 30,894.30
	<u>\$242,182.64</u>
Sundry Shareholders	- - 2,955.00
Uncalled Capital	- - 245,047.50
	<u>\$490,185.14</u>

LIABILITIES

Unadjusted Losses (adjusted paid)	- - - \$8,182.36
Sundry Liabilities including unpaid Salaries, Rent, Directors' and Auditors' Fees, etc.	- - - 3,997.85
Reinsurance Reserve	- - 122,700.00
Surplus Security to Policyholders	355,304.93
	<u>\$490,185.14</u>

WM. GREENWOOD BROWN,
General Manager



\$20,000 Challenge Still Open **Russell-Knight Supremacy Unquestioned**

Forty days ago we offered a challenge of \$20,000 to the whole world of manufacturers and owners of automobiles with poppet valve engines, to equal the recent performance of the RUSSELL-KNIGHT at West Toronto. To date no one has seen fit to accept. Until this challenge is accepted and our record equalled the Canadian-built

RUSSELL-KNIGHT

engine acknowledges neither superior nor equal.

For fifty days longer the challenge remains open. In the interest of motor manufacturing we hope some enthusiastic admirer of poppet valve engines will have confidence enough in his favorite motor to accept the challenge and enter the test.

Meantime the World's Champion Motor is the Canadian-built RUSSELL-KNIGHT.

Ask for Your Copy of Prof. Price's Complete Report Now Being Printed

RUSSELL MOTOR CAR CO., LIMITED

100 Richmond Street West, Toronto

Head Office and Factory, West Toronto.

Branches at Hamilton, Montreal, Winnipeg, Calgary, Vancouver, Melbourne