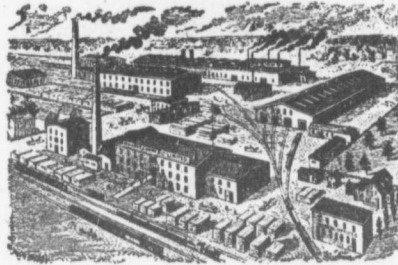


RHODES, CURRY & CO., LTD.



Maritime Headquarters for Building Materials.

Yards Stocked with Two Million ft. of Lumber.

Special Facilities for Church Work, also Fittings for
Banks, Stores, Schools, Etc.

Cast Iron Columns, Cresting, Sash Weights, Etc.

Branch at Halifax.

AMHERST, N. S.

Engines *and* Boilers,

For Electric Lighting, Street Railways & Factories.

Correct designs and superior construction.

Highest economy and efficiency guaranteed.

ROBB ENGINEERING COMPANY, L'td.,

AMHERST, N. S.