

CURRENT NEWS

FROM COAST TO COAST

Chilliwack, B.C.

B. C. Electric Railway Company have renewed work on a 78-pole extension on Rosebank island near Chilliwack. The extension when completed will serve 23 homes. Other extension jobs in the valley include a three-pole extension to serve four homes on Broadway, north of the Chilliwack Central road at Chilliwack; a three-pole extension to serve three homes on the Lower Sumas road near Abbotsford, and a four-pole extension to serve one home on the New McLellan road in Surrey.

Fort William, Ont.

Throughout the length of the Sturgeon River gold field many companies and syndicates are preparing for the spring campaign of mine search to add to the activity induced by such advanced programmes as those of mill installations at Dik Dik, mining plant erection at Sturgeon River Gold and Casey-Contact Gold Mines, Ltd., and diamond drilling at the Dumond, Koch-Danef and Midway.

Coming into mining prominence chiefly as a result of the Little Long Lac and Sturgeon River finds, Thunder Bay mining district increased its gold production by more than 320 percent in the year 1934, as compared with 1933. During 1934, gold production was valued at \$658,057, against \$201,304 in the previous year. A total of 87,983 tons of ore were milled during the past year, compared with 34,789 in 1933.

Fredericton, N.B.

A bill in amendment to the Public Utilities Act being introduced in the New Brunswick Legislature, will enable the New Brunswick board to take into consideration the reasonableness of the rate of return to the public utility upon its investment in ordering rates, tolls, charges or schedules to be reduced, modified or altered. It was chiefly because of this lack of power under the present act that the New Brunswick court of appeals allowed an appeal of the Maritime Electric Company, Limited, from an order of the board in favor of the City of Fredericton. The difference was settled by agreement without recourse to the supreme court of Canada.

A delegation of more than 20 residents of the Stanley and Cross Creek district met in informal conference recently with the New Brunswick Electric Power Commission to discuss possibilities of extending the commission's transmission system from the North Devon substation up the Nashwaak valley. This distance to be covered by the proposed line would be about 30 miles.

A bill introduced in the legislature on April 2 will equalize service charges for electric light and power in rural districts which are served by the New Brunswick Electric Power Commission. **Hon. E. A. Reilly**, chairman of the commission, introduced the bill and explained that at the present time the service charge ranged from \$1.29 to \$2.50 per month. With the passage of the legislation introduced the service charge will be \$1.00 per month for all rural users of the commission's electric light and power.

Grand Valley, Ont.

East Luther Telephone Company, Grand Valley, Ont., is reported to be in the market for a new 15-cord switchboard for the telephone system; also for 3,500 lbs. of No. 12 N.B.S. (104) copper and a quantity of 10-pin crossarms. **W. J. Watt** is proprietor and manager.

Hardrock, Ont.

A complete assay plant is being installed at the Hardrock Gold Mines property in the Little Long Lac area. Consideration also is being given to the installation of a five-ton mill to be used for making a thorough sampling test of the number one vein under development on the 20d foot horizon.

Kingston, Ont.

North Frontenac and the Tweed districts are expecting a mining boom. The fact that Consolidated Smelters, Ltd., have taken an option on the Golden Fleece gold mining property at Northbrook gives rise to hopes that considerable activity will be noted. Diamond drills will be sunk at the property to determine the exact value of the ore, and, if it proves satisfactory, operations on a large scale will immediately start.

Kirkland Lake, Ont.

Red Lake Gold Shores Mines Limited, owners of a property adjacent to the Howey mine in northwestern Ontario, is considering the erection of a mill before the current year is out. Decision on installation of the mill will depend on results from the further shaft-sinking programme that has commenced.

Lachine, P.Q.

The city of Lachine contemplates a public works programme amounting to about \$100,000. Included in this is an expenditure for street lighting. **Robert Dorion**, engineer.

Montreal, P.Q.

On April 1st, Shawinigan Water and Power Company redeemed their five-year 6 percent secured notes dated February 1st, at a premium of one percent, with accrued interest. Of these notes, \$4,060,500 were outstanding as at December 31 last.

Morien, N.S.

Nova Scotia Power Commission, Halifax, N.S., contemplates building a power line at Morien, N.S.

Noranda, P.Q.

Noranda announces that its water rights on the Upper Ottawa River, which have been transferred to a wholly owned subsidiary, the Noranda Power Company, will have final plans completed this year and it is expected that tenders will be called for construction late in 1935. Initial development will be from 20,000 to 25,000 horsepower.

Peterborough, Ont.

The financial statement of the electrical department of Peterborough Utilities Commission for 1934, shows an operating profit as compared with a deficit in 1933. Receipts from domestic consumers greatly increased largely accounted for by the additional number of flat rate water heaters installed during the year.

Port Arthur, Ont.

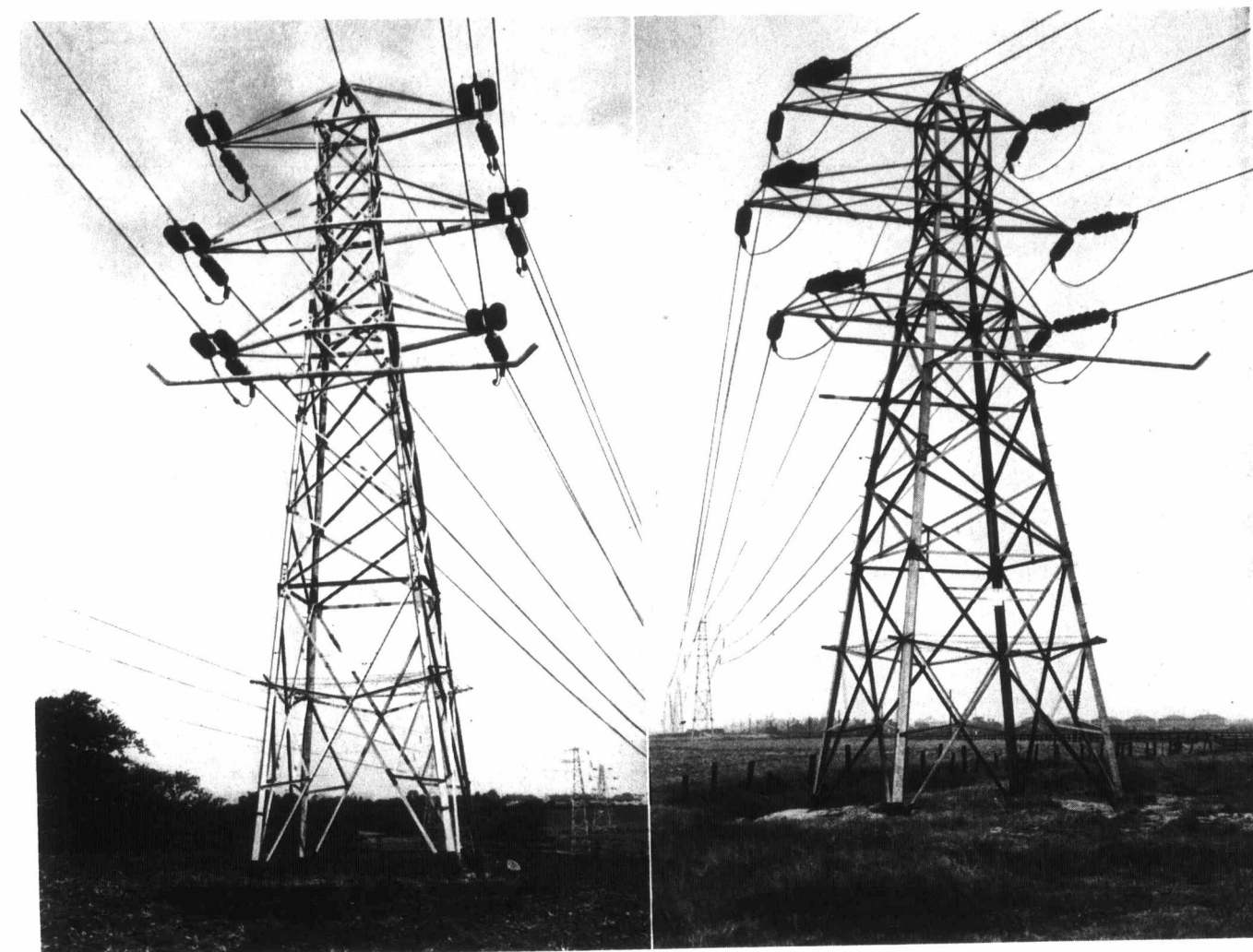
Formal application for the establishment of a branch of the Canadian Institute of Mining and Metallurgy at the lakehead has been forwarded to headquarters of the institute. Speaking in Port Arthur about a week ago, **E. J. Carlyle**, secretary of the institute, gave assurance that the establishment of a

(Continued on page 58)

Electrical News and Engineering—April 15, 1935

131612

AROUND THE WORLD



A.C.S.R. LINKS IN THE BRITISH GRID SYSTEM

The accomplishments of the Central Electricity Board in the construction of the Regional or Grid System of power interconnection throughout Great Britain have aroused the interest of electrical engineers everywhere. There are some 4,000 miles of transmission lines in operation—3,000 miles at 132,000 volts and 1000 miles at 66,000 and 33,000 volts.

The photographs illustrate 60° and 20° angle towers, strung with .15 sq. in. A.C.S.R., between Dunston and Hebburn on the route selected for the North East England Electricity Scheme (1929). Hundreds of miles of A.C.S.R. were purchased by the Central Electricity Board, and this light, strong cable has met every operating requirement satisfactorily.

ALUMINUM COMPANY OF CANADA LIMITED, TORONTO & MONTREAL



Electrical News and Engineering—April 15, 1935

55

MEIGHEN PAPERS, Series 5 (M.G. 26, I, Volume 206)

PUBLIC ARCHIVES
ARCHIVES PUBLIQUES
CANADA