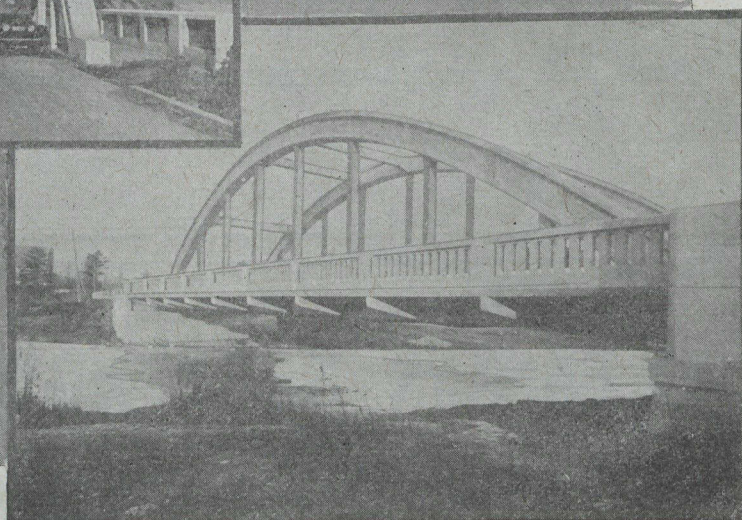


**CANADA CEMENT
CONCRETE**
FOR PERMANENCE



The Type of Bridge Adopted Along the Route of Toronto-Hamilton Highway

Even that wonderful 40-mile stretch of Concrete that links the cities of Toronto and Hamilton, might easily have been marred by spanning the rivers it crosses with anything less sightly than Concrete Bridges. The type adopted—from a design by F. G. Engholm, Consulting Engineer—while not unduly expensive to construct, has real artistic merit.

For most of these bridges the length of span is 122 ft. 7 inches—with an overall width of 38 ft. 2 inches; and a roadway 20 feet wide, sufficient for three cars to pass without crowding.

These Concrete Bridges are as permanent as the highway itself—an important feature of Canada's first big enterprise in Concrete Road-building.

*SPECIFY
CANADA CEMENT
Uniformly Reliable*

We maintain a Service Department to co-operate in all lines of work for which Concrete is adapted. Our library is comprehensive and is at your disposal at all times without charge.

Canada Cement Company Limited
Herald Building MONTREAL

Sales Offices at:— Montreal Toronto Winnipeg Calgary