

## BUYERS' DIRECTORY

### ACCOUNTANTS.

Gamble & Gladwell.  
Ross, H. J.  
Stein & Co.

### AIR COMPRESSORS.

Bellis & Morcom.

### ARTIFICIAL STONE.

Roman Stone Co.  
Morrison Co., T. A.

### AUTOMATIC TELEPHONES.

Canadian Machine Telephone Co.

### BARRISTERS.

Lighthall & Harwood.

### BATTERIES, DRY.

Canadian Independent Telephone Co.

### BELTING.

McLaren Belting Co., J.C.

### BOILERS.

Babcock & Wilcox.  
Robb Engineering Co.  
Waterous Engine Works Co.

### BONDS, ETC.

Bank of Montreal.  
Bank of Ottawa  
Bank of Toronto.  
Brent, Noxon & Co.  
Canada Securities Corpor'n.  
Can. Bank of Commerce.  
City & District Savings Bank.  
Dominion Bond Co.  
Domion Securities Corp.  
Imperial Bank.  
Merchants Bank.  
Ross, H. J.  
Wood, Gundy & Co.

### BRIDGES.

Canadian Bridge Co.  
Cleveland B. & Eng. Co.  
Dominion Bridge Co.  
National Bridge Co.  
Structural Steel Co.

### CABLES.

Brit. Insulated Co.  
Can. Indep. Telephone Co.  
Imperial Wire & Cable Co.  
Phillips Elec. Works, E.F.  
Standard Underground Cable Co. of Canada, Ltd.

### CAST IRON PIPES.

Can. Iron Corporation.  
Canadian Fairbanks Morse Co.

### CEMENT,

Canada Cement Company

### CONCRETE STEEL DAMS.

Ambursen Hydraulic Const. Co.

### CONCRETE MIXERS.

Canadian Fairbanks Morse Co.  
London Concrete Machy. Co.  
Mussens, Limited.  
Wettlaufer Bros.

### CONCRETE REINFORCEMENT

Can. Wire & Iron Goods Co.  
Garrioch, Goddard & Co.

### CULVERTS.

Pedlar People.

### DUST PREVENTIVE.

Barrett Mfg. Co.

### ELECTRIC MOTORS.

Garrioch, Goddard & Co.  
Northern Elec. & Mfg. Co.

### ELECTRIC WIRE.

Can. British Insulated Co.  
Canadian Indep. Teleph. Co.  
Canadian Machine Teleph. Co.  
Imperial Wire & Cable Co.  
Philips Electrica Works, E.F.  
Standard Underground Cable Co. of Canada, Ltd.

### ELECTRICAL SUPPLIES.

Northern Elec. & Mfg. Co.

### ENGINES.

Babcock & Wilcox  
Bellis & Morcom.  
Robb Engineering Co.  
Waterous Engine Works Co.

### ENGINEERS & CONTRACTORS.

Aqueducts, Limited.  
Austen & Chapdelaine.  
Barrow, E. G.  
Bayfield & Archibald.  
Beaubien, De Gaspe.  
Bowring & Logan.  
Bowman & Connor.  
Brandeis, Charles.  
Brown, W. M.  
Burnett, Geoffrey K.  
Can. Inspection and Testing Laboratories.  
Cartwright, Mathieson & Co.  
Chipman & Power.  
Cleveland & Cameron.  
Dietrich, W. N.  
Dutcher, Foreman & Gregory  
Fairchild, Jones & Taylor.  
Francis, Walter J. & Co.  
Frew, J. F.  
Fuce & Scott.  
Galt Eng. Co., The John Higman & Doctor.  
Isdale, John S.  
Jacobs & Davies, Incp.  
Keefer & Keefer.  
Laurie & Lamb.  
R. S. Lea and H. S. Ferguson  
Leofred, A.  
Mace, T. Harry.  
Mather, Yuill & Co.  
McConnell, B. D.  
McCulloch, A. L.  
Moon & Silverton  
Murphy & Underwood.  
Murray, T. Aird.  
Phillips, Stewart & Lee.  
Potter, Alex.  
Ross & Co., R. A.  
Smith, Kerry & Chace.  
Surveyer & Frigon.  
Topp, Charles H.  
Wright, P. Mortin.  
Young, C.R.

### ENGINEERS, TELEPHONE.

Clement, Edw. E.  
Dagger, F.  
McMeen & Miller.  
Zabel, Max. W.

### ENGRAVERS.

Amer. Bank Note Co.

### FIRE ALARMS.

Northern Elec. & Mfg. Co.

### FIRE DEPT. SUPPLIES.

H. K. Martin.  
Waterous Engine Works Co.

### FIRE ENGINES.

Waterous Engine Works Co.

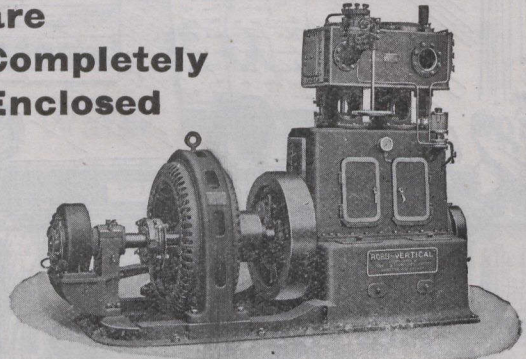
### GAS ENGINES.

Can. Fairbanks-Morse Co.

For Cleanliness and the  
Protection of Moving Parts

## ROBB COMPOUND ENGINES

are  
Completely  
Enclosed



INTERNATIONAL ENGINEERING WORKS, Ltd.

Owners of works formerly of

## ROBB ENGINEERING COMPANY

Works: AMHERST, N. S., CANADA  
South Framingham, Mass.

SOLE CANADIAN AGENTS FOR

## C. A. Parsons & Co., Newcastle-on-Tyne

Turbines, Turbo Electric Generators, Turbo Pumps, Blowers  
and Compressors

39-17

## THE DOMINION WOOD PIPE COMPANY LIMITED

New Westminster, B. C.

Manufacturers of

## DOUBLE WIRE WOUND



AND

Cast Iron Specials, Valves, Hydrants, Etc.

# WELL DRILLING

TOWN WELLS A SPECIALTY

We have the latest scientific instruments for locating subterranean  
water courses before drilling.

If you need water, you need us.

SASKATCHEWAN WELL DRILLING CO.  
ROULEAU, SASK.