

Every Manufacturer

Should see that his power does not cost him more than is necessary. A word to the wise is sufficient. Our engines, the **WHEELLOCK** AND **IDEAL**, are noted for their great economy in fuel. Write to us for more particulars on the subject and we will mail you a handsome catalogue and give you any other information on power plants.

THE GOLDIE & McCULLOCH CO., LIMITED,
GALT, ONTARIO.

EXPORTERS FROM CANADA . . .

Desiring information regarding the best facilities for shipping abroad, with whom correspondence may be had, and to whom consignments may be made, should correspond with

The Canadian Manufacturer,

TORONTO, CANADA.

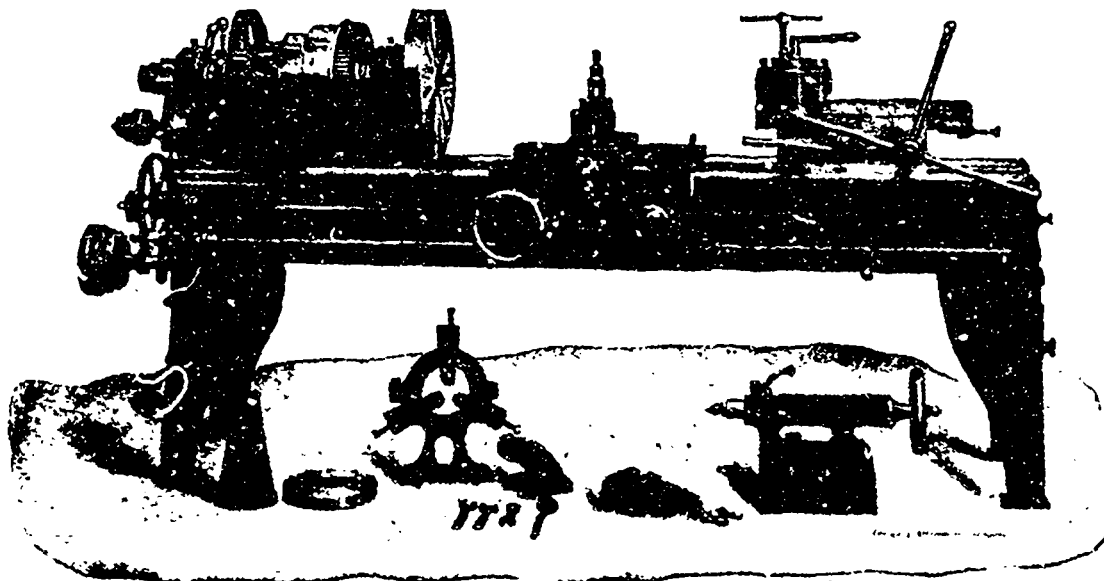
No Charge Made for Giving Information.

JOHN BERTRAM & SONS,

DUNDAS, - - ONTARIO.

We have a number of

Second-Hand Tools



ENGINE LATHE WITH TURRET ATTACHMENT.

When writing to Advertisers kindly mention THE CANADIAN MANUFACTURER.

Which being in Good Order are offered at

Very Low Prices

To clear out Stock quickly.

★

PLEASE WRITE IF INTERESTED

★