



**Before**

Stream  
Distance  
25 feet

- and -

**After**

Stream  
Distance  
150 feet



## Result of Cleaning a 6" Water Main at Lockport, N.Y.

Did you ever stop to think that the deposits and incrustations which accumulate in your water mains either decrease the flow or require more pumping pressure? Relaying or cleaning are necessary to correct this trouble. We do this work of cleaning so thoroughly that the mains will again carry their original volume of water; so that your pumping stations will require less power, and consume less coal; so that your water pressure will furnish fire protection on the original basis.

*Ask for booklet "Cleaning of Water Mains," free on request.*

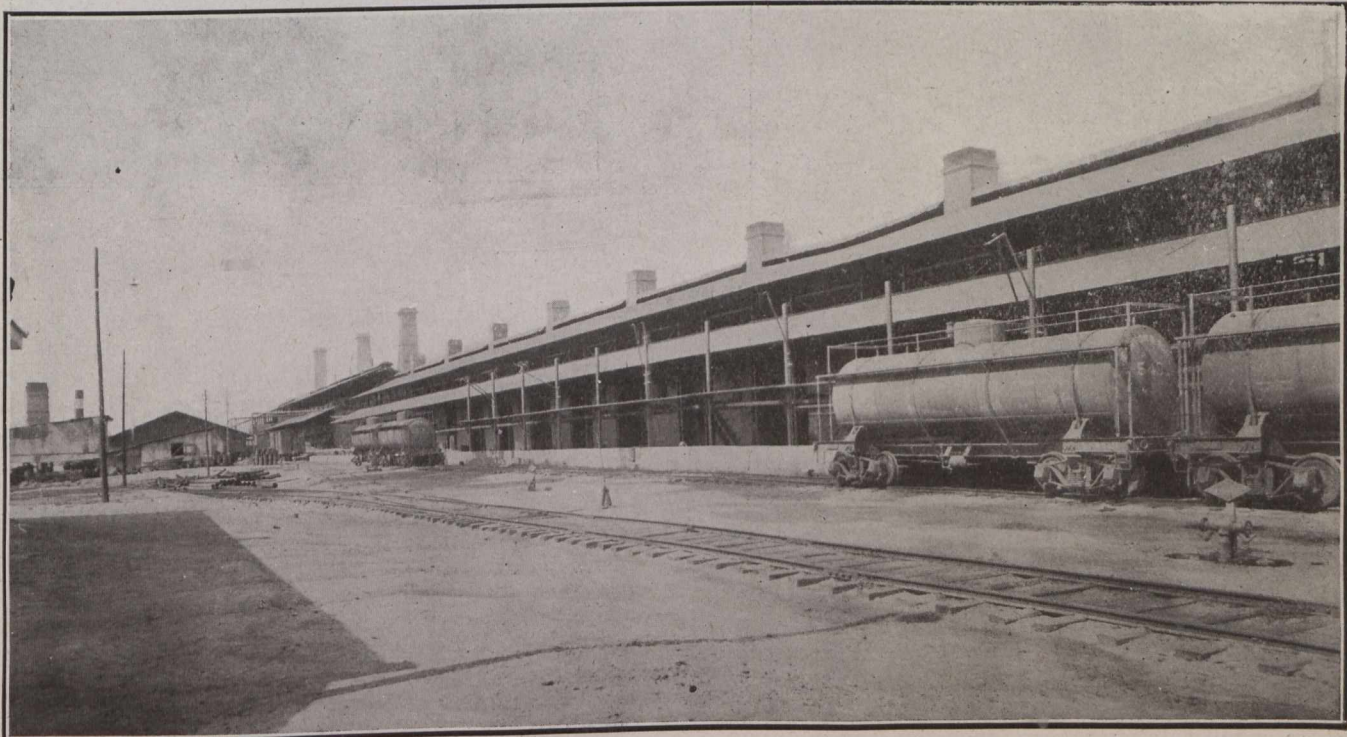
**National Water Main Cleaning Company**  
50 Church Street, New York City

**N.W.M.C.Co.,**  
50 Church St.,  
New York City.

Gentlemen: Please  
send me a copy of  
your booklet "The  
Cleaning of Water Mains"  
and List of Cities.

## TANK SHIPMENTS

We have facilities for shipping Asphalt and Fluxphalte (road dressing) in tank cars to municipalities anywhere in Canada.



**THE ASPHALT & SUPPLY CO., LIMITED, Board of Trade Bldg., MONTREAL**