



Dairy Farming in Western Canada

The advent of government and co-operative creameries, together with co-operative methods of marketing, have placed the dairy industry on a new footing in the prairie provinces and offer to the prairie farmer an

Opportunity for Better Business

"Unlike the wheat farmer, the dairyman's work is evenly distributed throughout the entire year. He can keep his hired help by the year. His income is also steadier. A frost or a hail storm does not cut it off abruptly or spoil his season's work, as is the case where one crop is depended on entirely."

The above is an excerpt from a bulletin entitled—

Dairy Barns, Ice and Milk Houses for the Prairie Farm

prepared by the COLLEGE OF AGRICULTURE of the UNIVERSITY OF SASKATCHEWAN. It contains descriptions and detailed plans of four different dairy barns, two ice and milk houses, information concerning the erection, use and care of the buildings, besides

Complete Bills of Material

This bulletin, or any named below, will be sent FREE on request to the Chief Forester, Victoria, B.C.

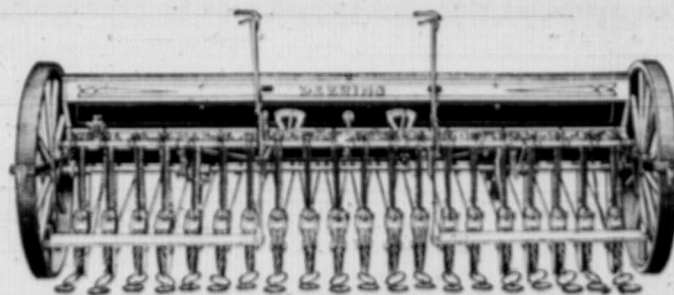
- | | |
|-------------------------|---------------------------------|
| 1—General Purpose Barns | 6—Piggeries and Smoke Houses |
| 2—Dairy Barns | 7—Poultry Houses |
| 3—Beef Cattle Barns | 8—Implement Sheds and Granaries |
| 4—Horse Barns | 9—Silos and Root Cellars |
| 5—Sheep Barns | 10—Farmhouses |

SERVICE TO WOOD USERS

The British Columbia Forest Service will be glad to furnish information concerning the uses and qualities of woods to any inquirer. Write to the British Columbia Lumber Commissioner, W. H. Houston, 303 Dominion Building, Regina, or the Chief Forester, Victoria, B.C.

British Columbia Has a Wood For Every Use

What the Deering Drill Does



IT is worth something to have your grain planting done on time. It is also worth while to be able to do it easily, with the least work for horses and men. These two advantages are assured when you use Deering drills.

But besides these positive advantages, there are possible advantages just as important. Deering drill planting gives the grain the best kind of a start, it protects the growing grain during an unusually dry or wet season, it betters your chances for a good, full crop of high quality grain.

Deering drills first make a furrow just deep enough, then plant the kernels regularly, according to the quantity per acre you want to sow, and then cover them thoroughly to an even depth. They are light-draft machines, with strong frames, large, easily-filled grain boxes, and accurate fluted force feed. They are made in single disk, double disk and shoe styles with from 14 to 22 furrow openers.

The Deering local agent is the man to see when you are ready to look at drills. See the sample drill line, or write to us for a catalogue showing all the good features of Deering drills.

International Harvester Company of Canada, Ltd.

BRANCH HOUSES

At Brandon, Calgary, Edmonton, Estevan, Hamilton, Lethbridge, London, Montreal, N. Battleford, Ottawa, Quebec, Regina, Saskatoon, St. John, Winnipeg, Yorkton

LOUDEN BARN EQUIPMENT

FOR QUALITY

FOR SERVICE

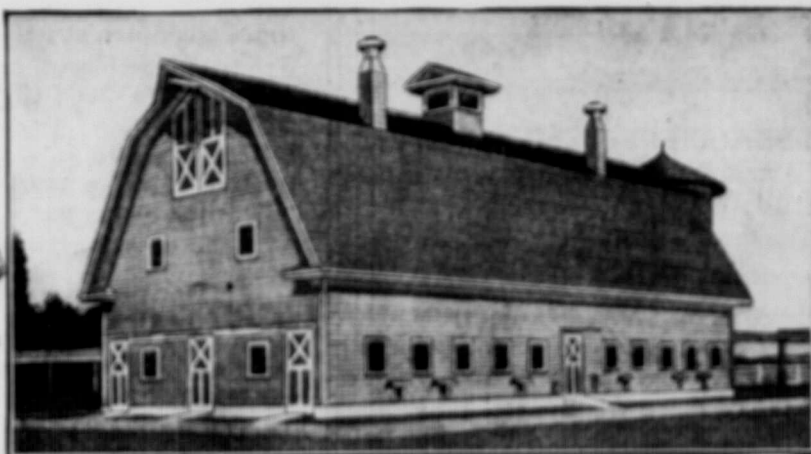
FOR SECURITY



FILL OUT AND MAIL US THE COUPON FOR THIS FREE BOOK.

Book of Barn Plans Free

Louden "Barn Plans" is not a catalogue of barn equipment. It is a complete and valuable book of reference and instruction on barn construction. The 112 pages of Louden Barn plans is full of dollar saving information—the best of ideas gathered by the Louden Company during many years of barn building, and barn equipment experience. 51 representative designs for cow barns, horse barns, general purpose barns and hog houses. In addition, there are 32 pages devoted to general construction problems, such as concrete work, laying floors, roof construction, ventilation, etc.



Louden equipment makes possible a clean, sanitary barn with a minimum of expense for upkeep. When cows are transferred from dark, dirty barns to Louden barns, the milk flow often increases from 15 to 25 per cent, and the labour of caring for the herd is reduced from one-third to one-half.

The cost of installing Louden equipment is surprisingly small, and is just as great an economy for the man with a half dozen animals as for a man with a hundred. The percentage of labour saved is the same.

- The Louden Line includes:
- | | |
|------------------|--------------------|
| Litter Carriers, | Hay Carriers, |
| Feed Carriers, | Cow Stalls, |
| Horse Stalls, | Water Basins, |
| Cow Pens, | Bull Pens, |
| Hog Pens, | Barn Door Hangers, |

Catalogues Free

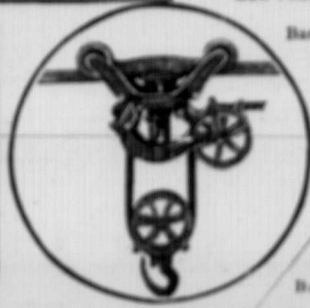
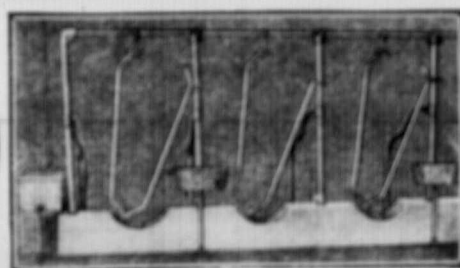
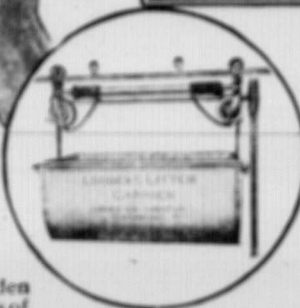
Please send me copy of Louden Barn Plans, I expect to build (or remodel) barn for

_____ cows and _____ horses. Barn will be about _____ x _____ ft.

Name _____

P.O. _____

Free _____



LOUDEN MACHINERY CO.

11 CRIMEA ST., GUELPH, ONT.

VANCOUVER, B.C. WINNIPEG, MAN. ST. JOHN, N.B.